

THE CHESAPEAKE AND OHIO RAILWAY COMPANY

ENGINE WASH RACK  
AT  
HINTON

SUMMERS COUNTY

WEST VIRGINIA

HINTON DIVISION --- NEW RIVER SUB-DIV.

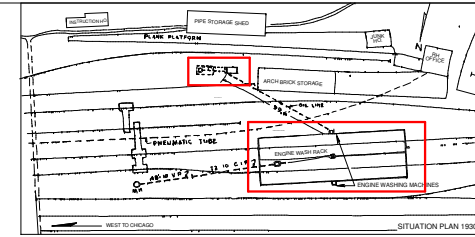
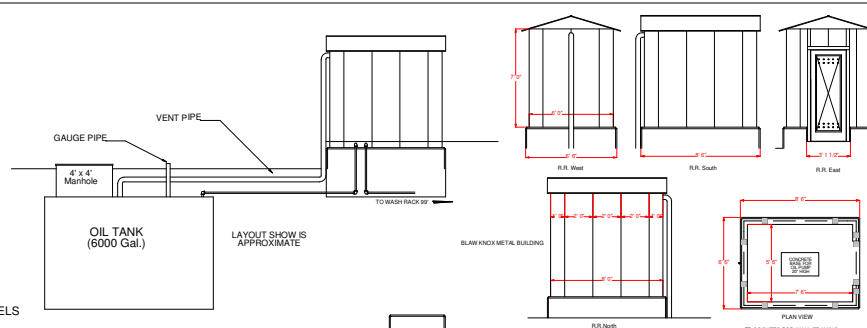
SHEET 2 of 2

DRAWN BY:

7 / 2004

CIRCA 1945

WILLIAM E. SIMONTON III



WASH RACK PLAN VIEW WITH GRIDS INSTALLED