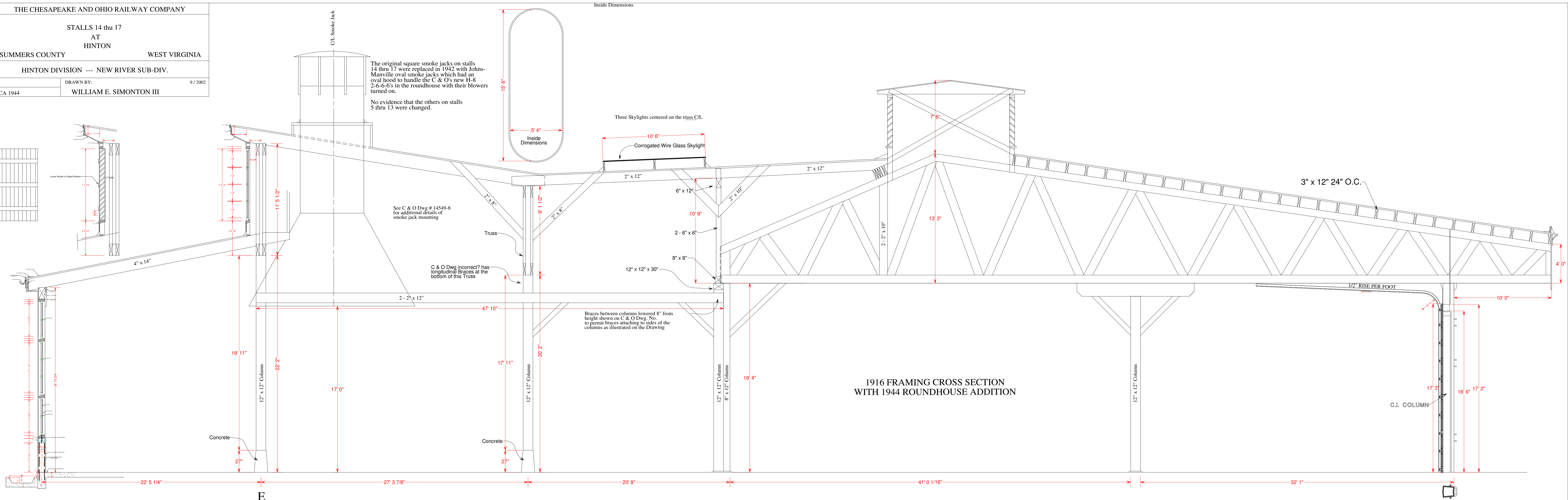
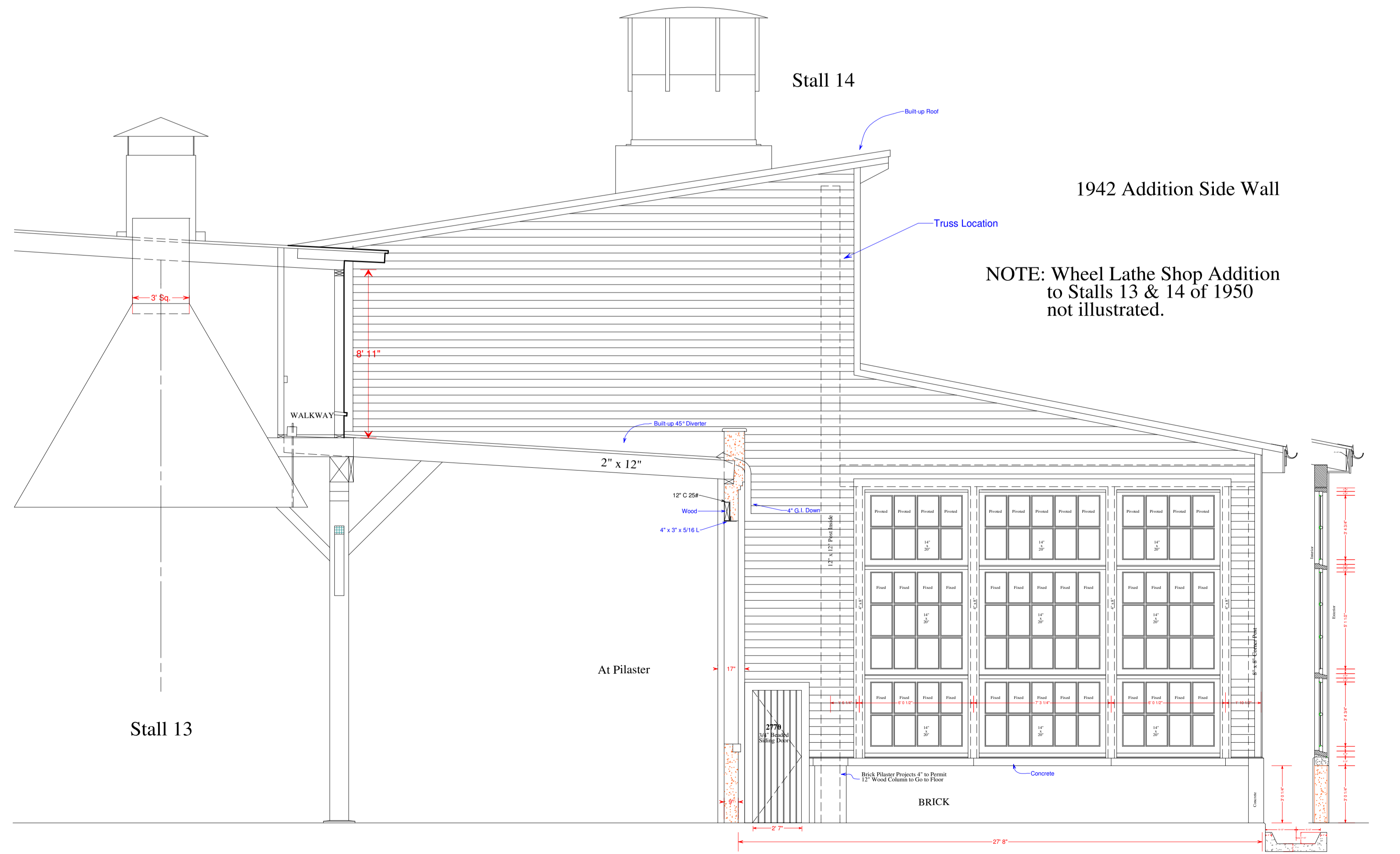
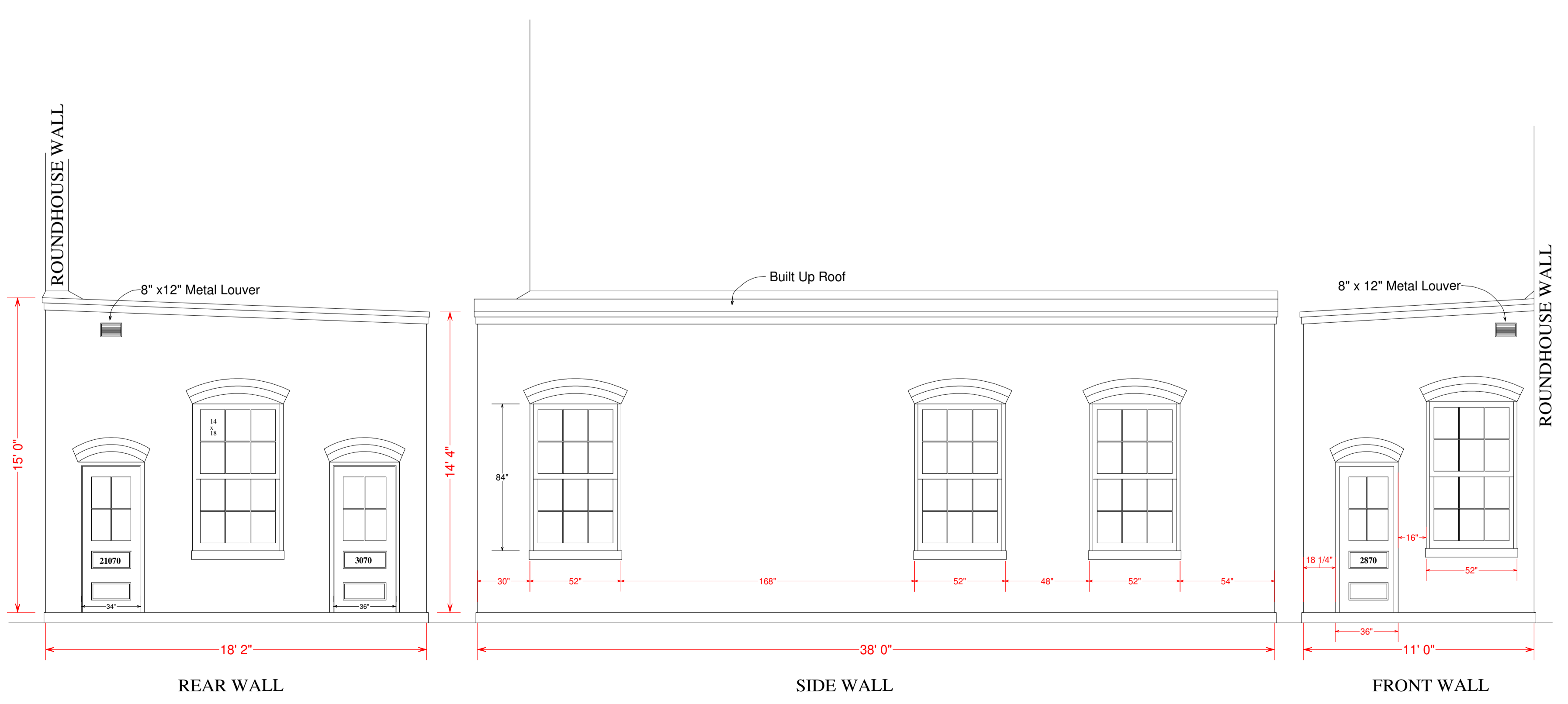


THE CHESAPEAKE AND OHIO RAILWAY COMPANY
 STALLS 14 thru 17
 AT
 HINTON
 SUMMERS COUNTY WEST VIRGINIA
 HINTON DIVISION --- NEW RIVER SUB-DIV.
 DRAWN BY: WILLIAM E. SIMONTON III 9/2002
 CIRCA 1944

The original square smoke jacks on stalls 14 thru 17 were replaced in 1942 with Johns-Manville oval smoke jacks which had an oval hood to handle the C & O's new H-8 2-6-6-6's in the roundhouse with their blowers turned on.
 No evidence that the others on stalls 5 thru 13 were changed.



1916 FRAMING CROSS SECTION WITH 1944 ROUNDHOUSE ADDITION



1942 Addition Side Wall

NOTE: Wheel Lathe Shop Addition to Stalls 13 & 14 of 1950 not illustrated.