

THE CHESAPEAKE & OHIO RAILWAY COMPANY

INTERIOR OF MONITOR  
800 TON FAIRBANKS MORSE & CO.  
AT HINTON

SUMMERS COUNTY - - - WEST VIRGINIA

HINTON DIVISION - - - NEW RIVER SUBDIVISION

SCALE: 1/4" = 1 FOOT

COPYRIGHT BY:

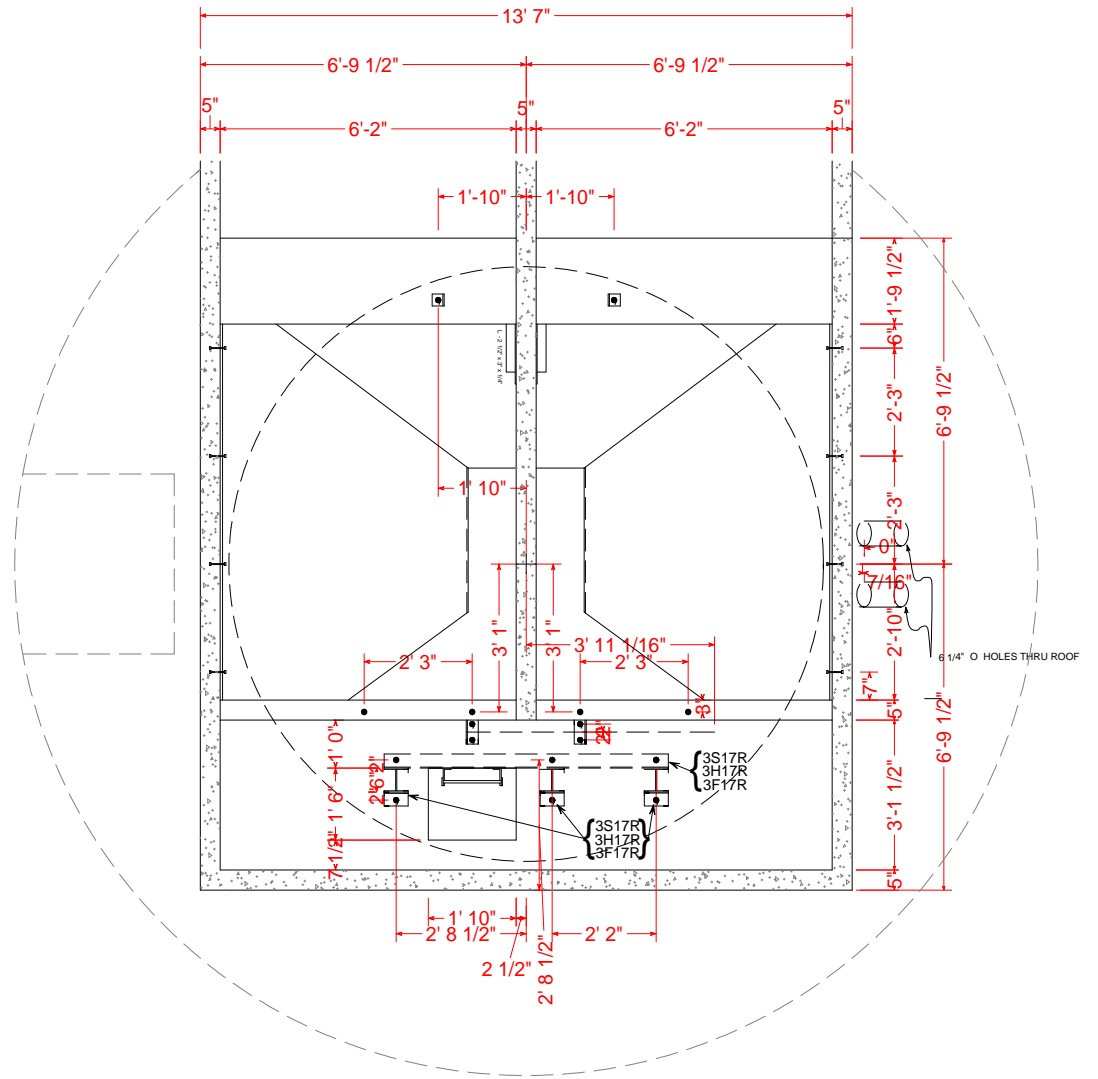
07/2010

CIRCA 1930 - 1950

WILLIAM E. SIMONTON III

©

PLAN A - A



A - - -

- - - A

Floor Elevation 176' 10"

Floor Elevation 169' 2"

