

ENGINE YARD LABORER'S HOUSE
STRUCTURE NO. 31
AT
HINTON

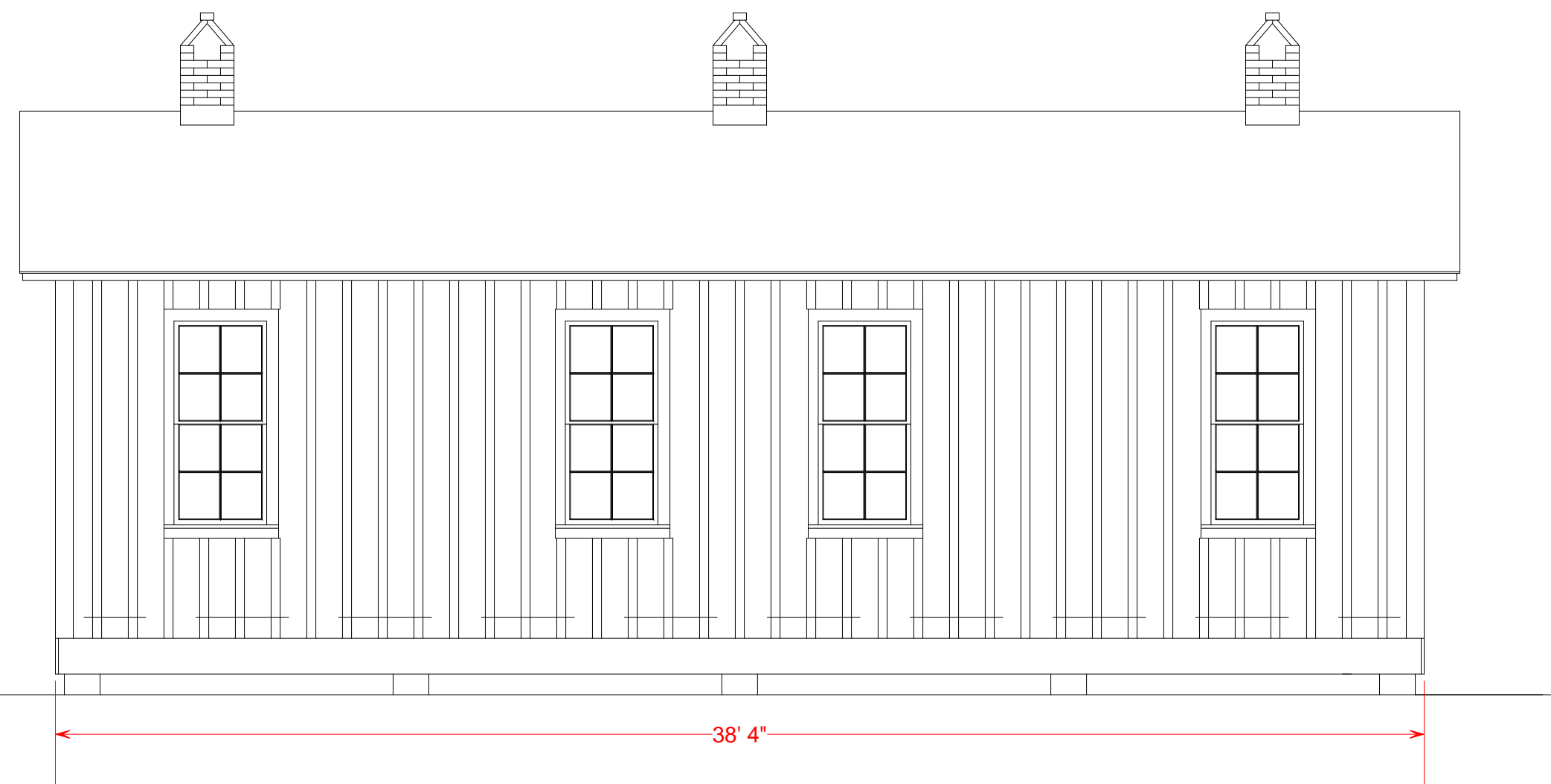
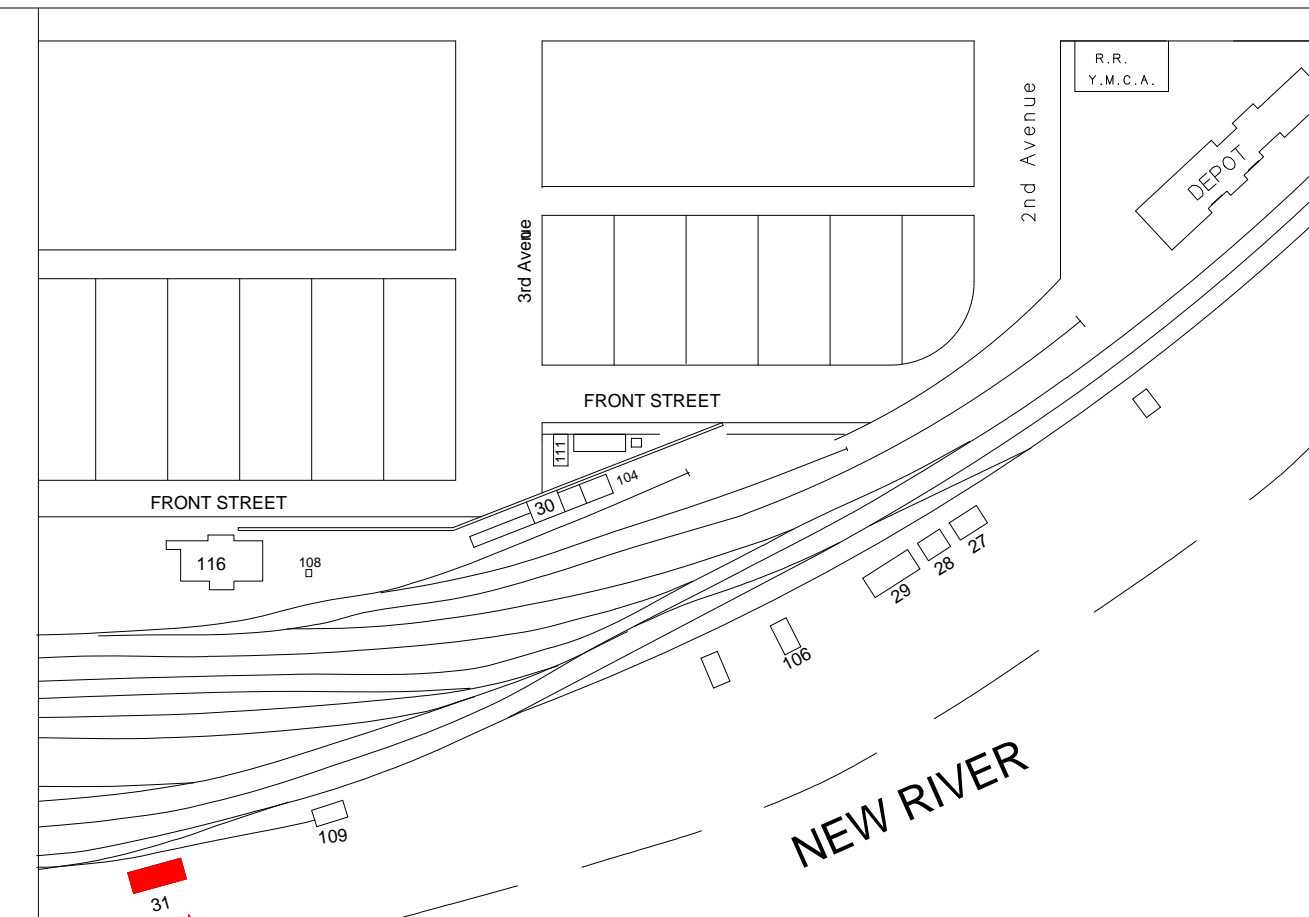
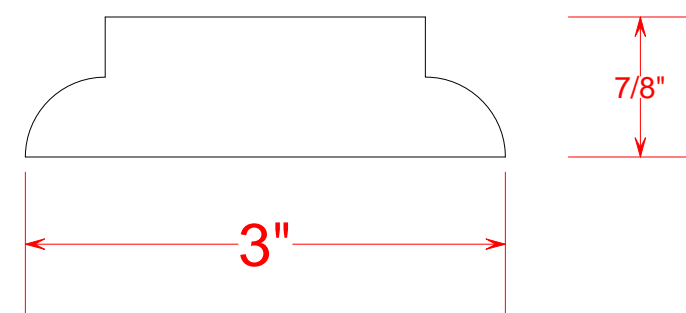
SUMMERS COUNTY WEST VIRGINIA

HINTON DIVISION --- NEW RIVER SUB-DIV.

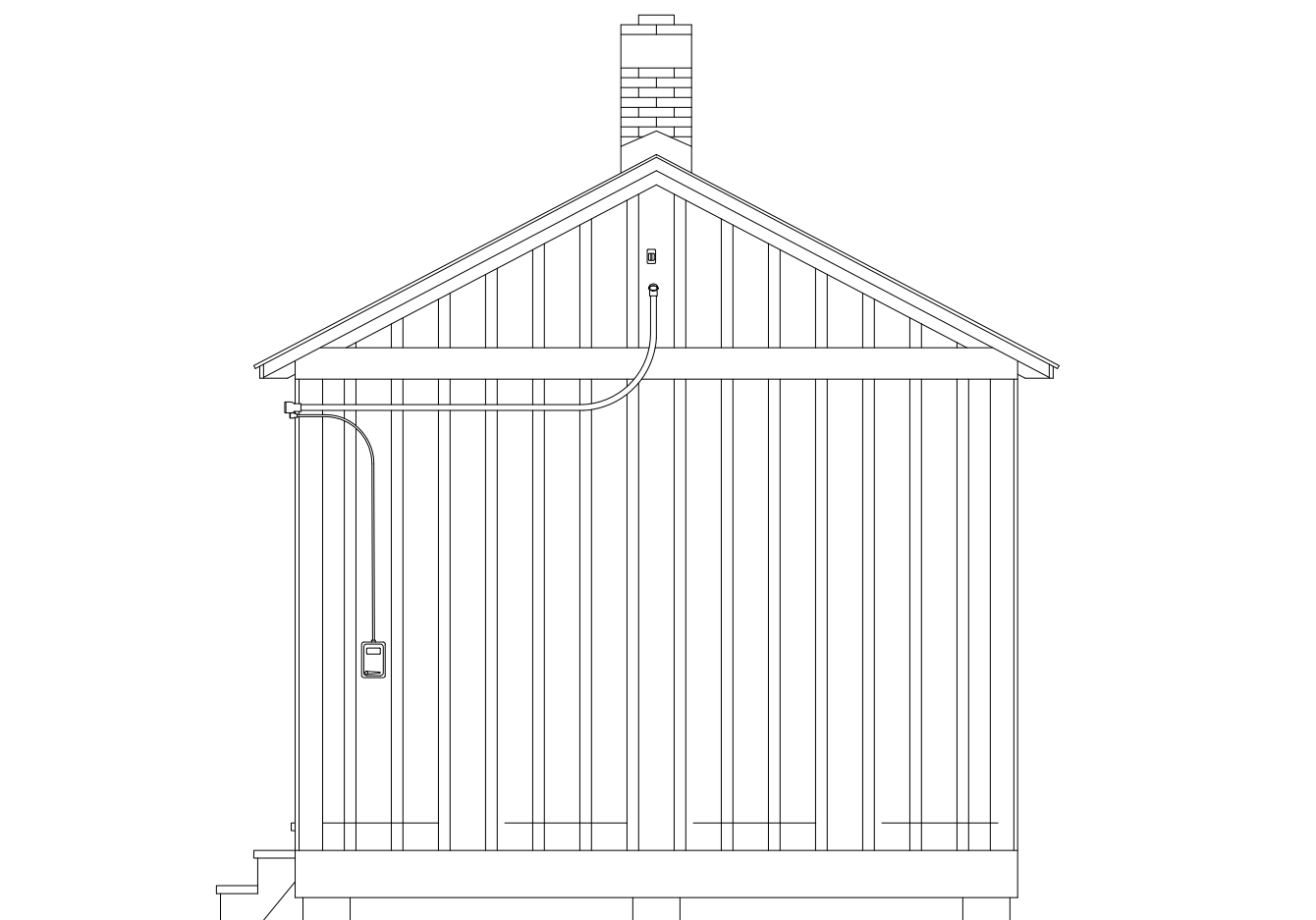
SCALE : 1/4" = 1' DRAWN BY 3/87
CIRCA 1946 WILLIAM E. SIMONTON III

31

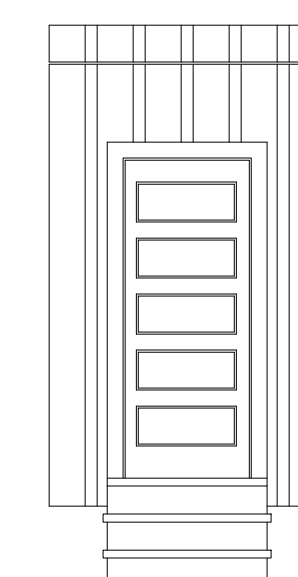
BATTEN DETAIL (Cross Section)



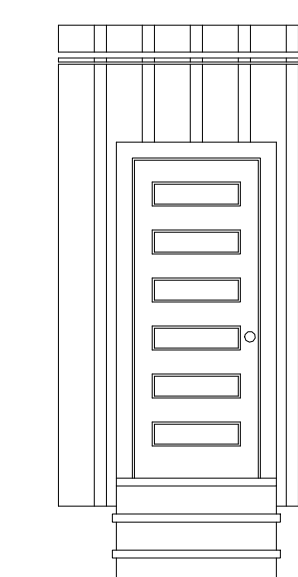
SOUTH ELEVATION



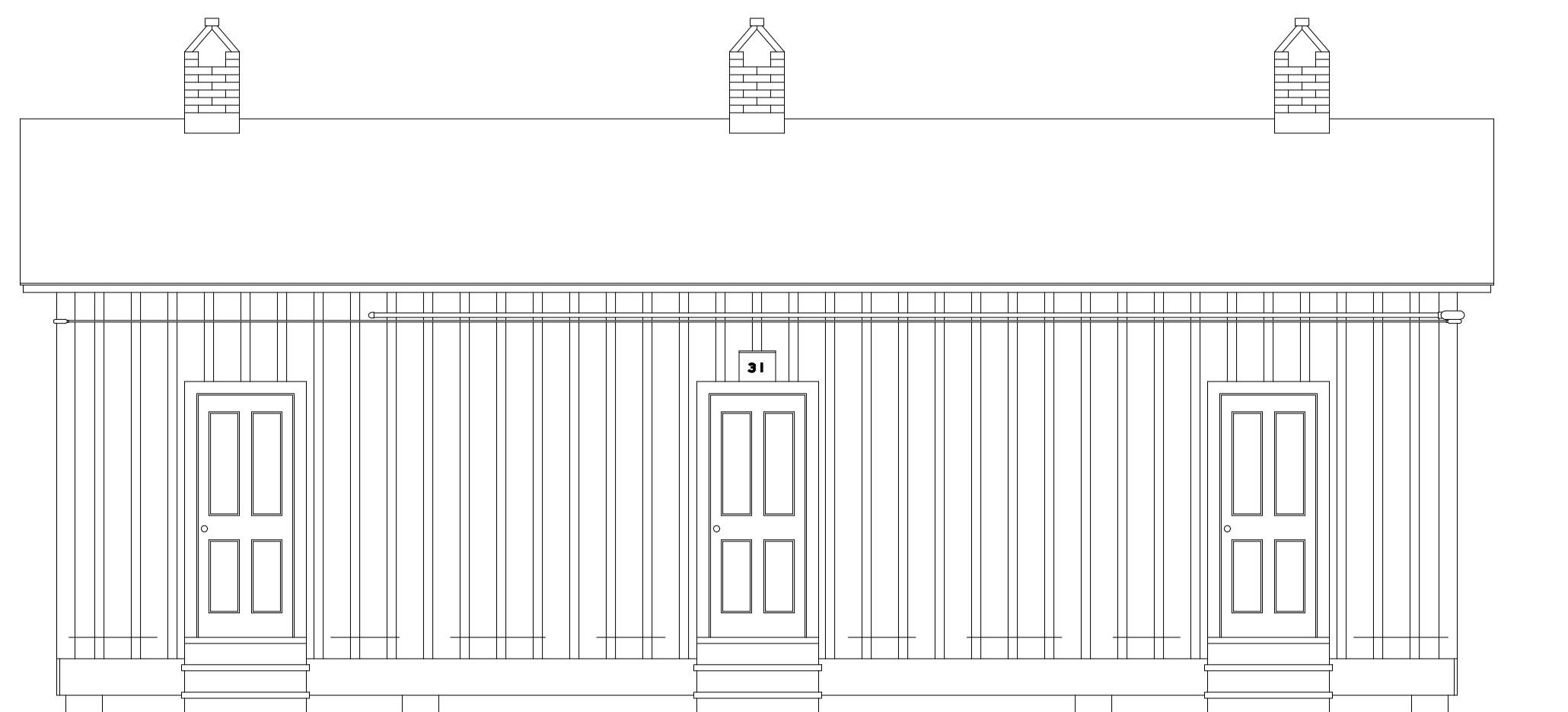
WEST ELEVATION



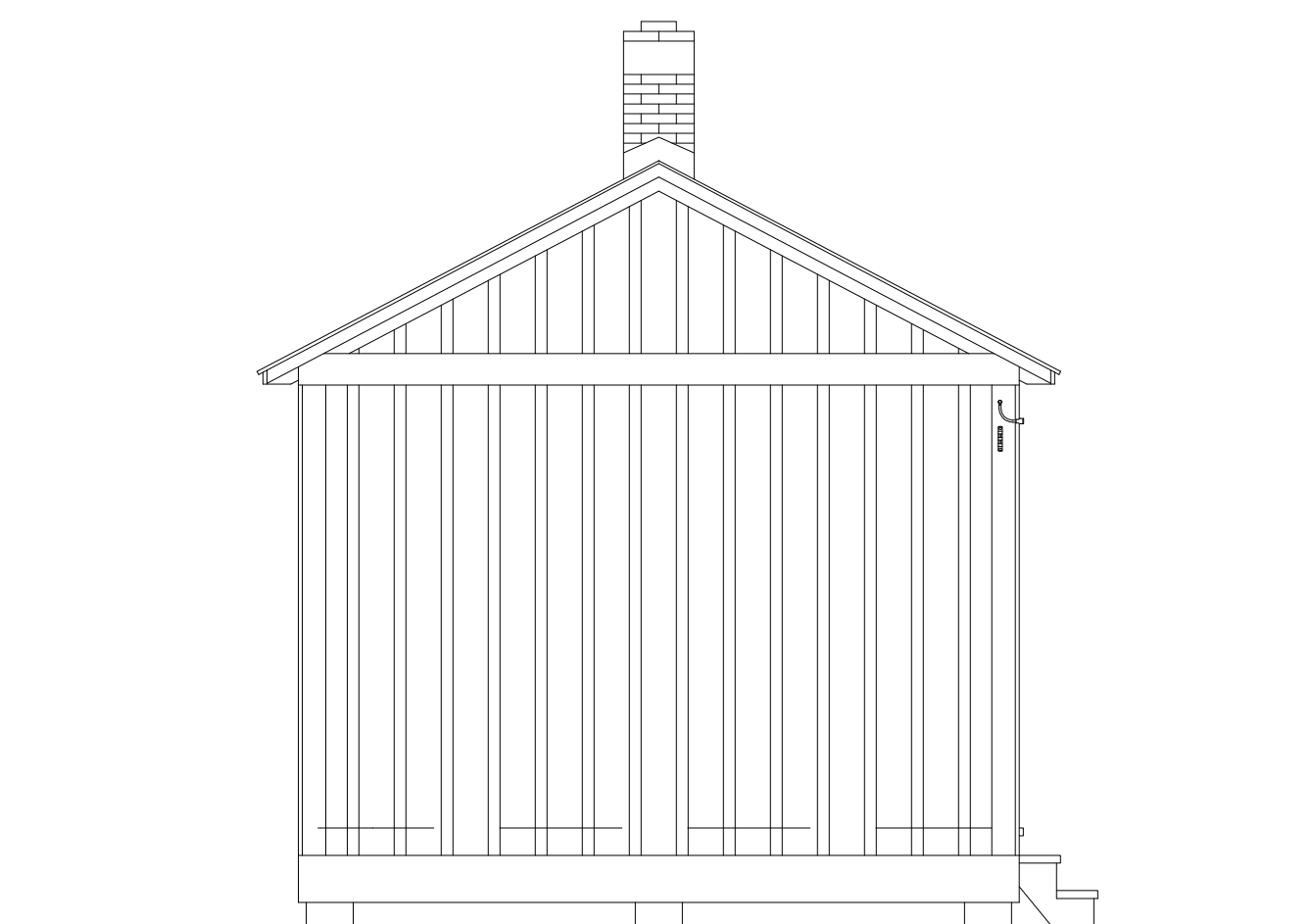
East Door 1985



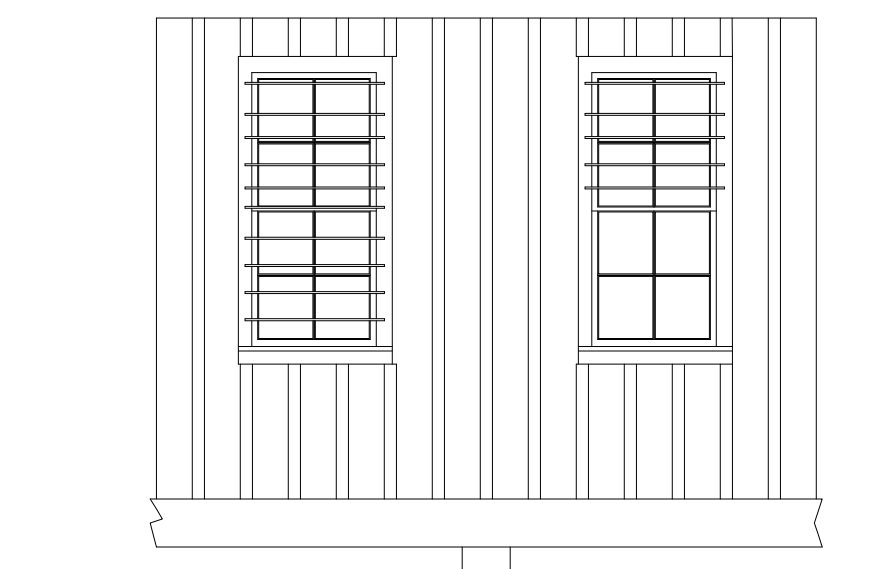
Center Door 1985



NORTH ELEVATION



EA ST ELEVATION



Center Windows 1985
Bars are 5/8" Rebar

