

THE CHESAPEAKE AND OHIO RAILWAY COMPANY

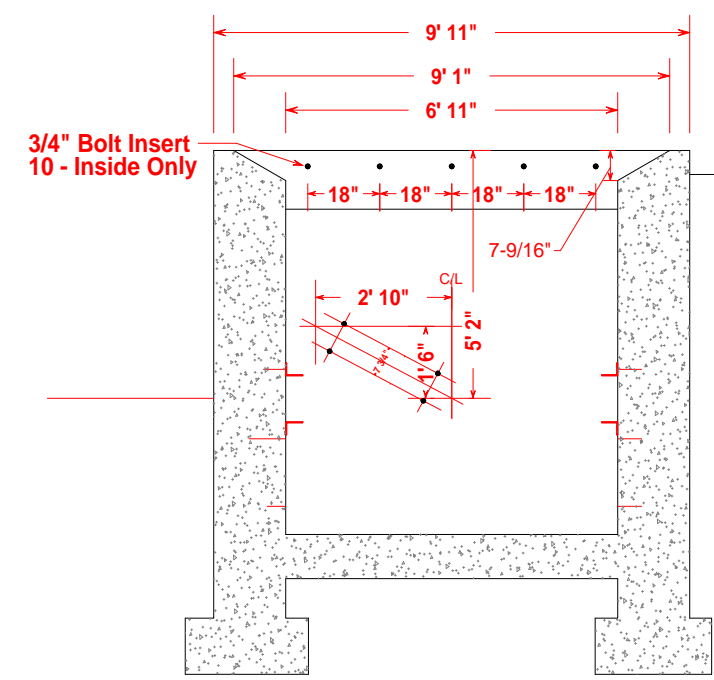
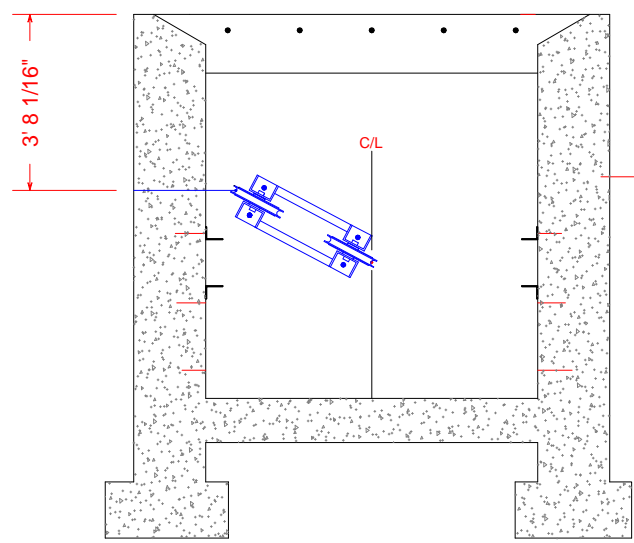
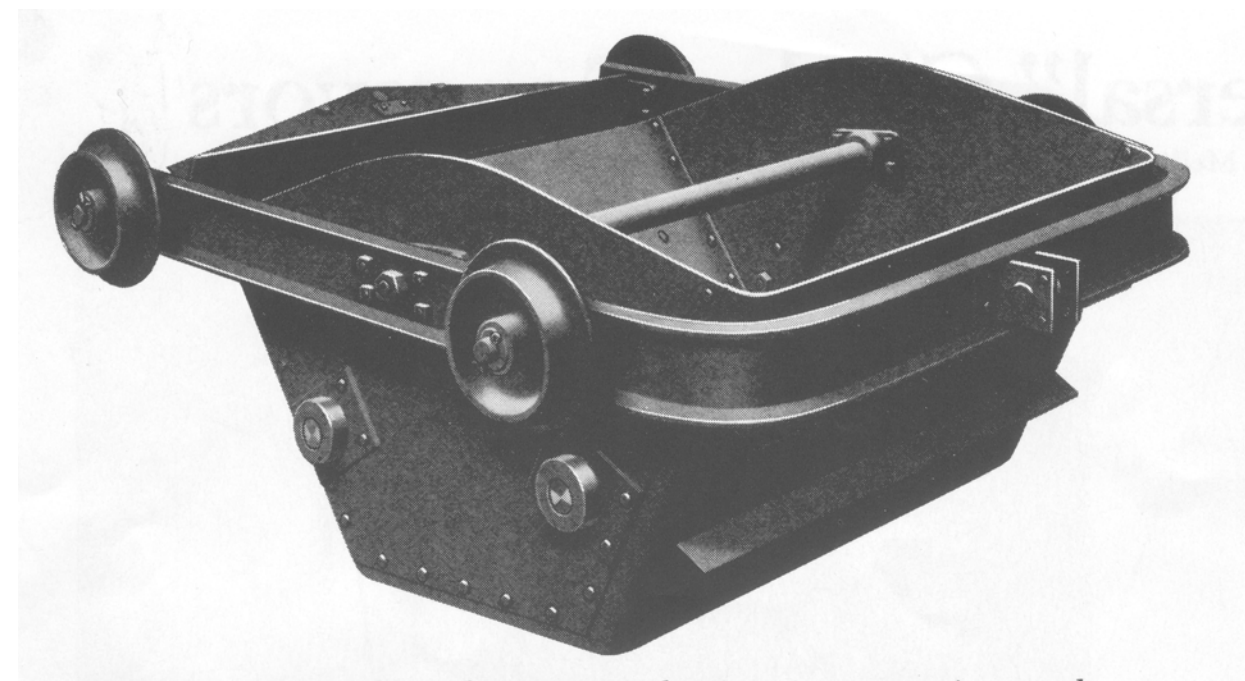
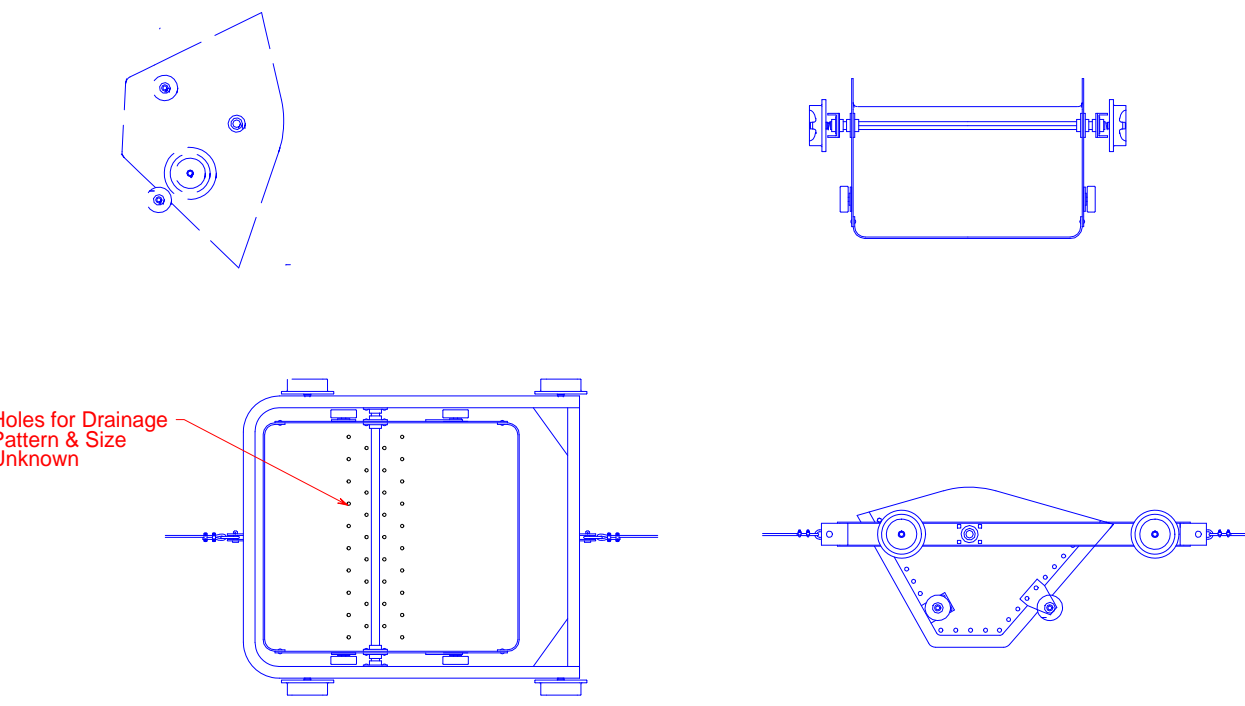
FAIRBANKS MORSE 60 Cu Ft CINDER CONVEYOR
AT
HINTON
SUMMERS COUNTY WEST VIRGINIA

HINTON DIVISION --- NEW RIVER SUB-DIV.

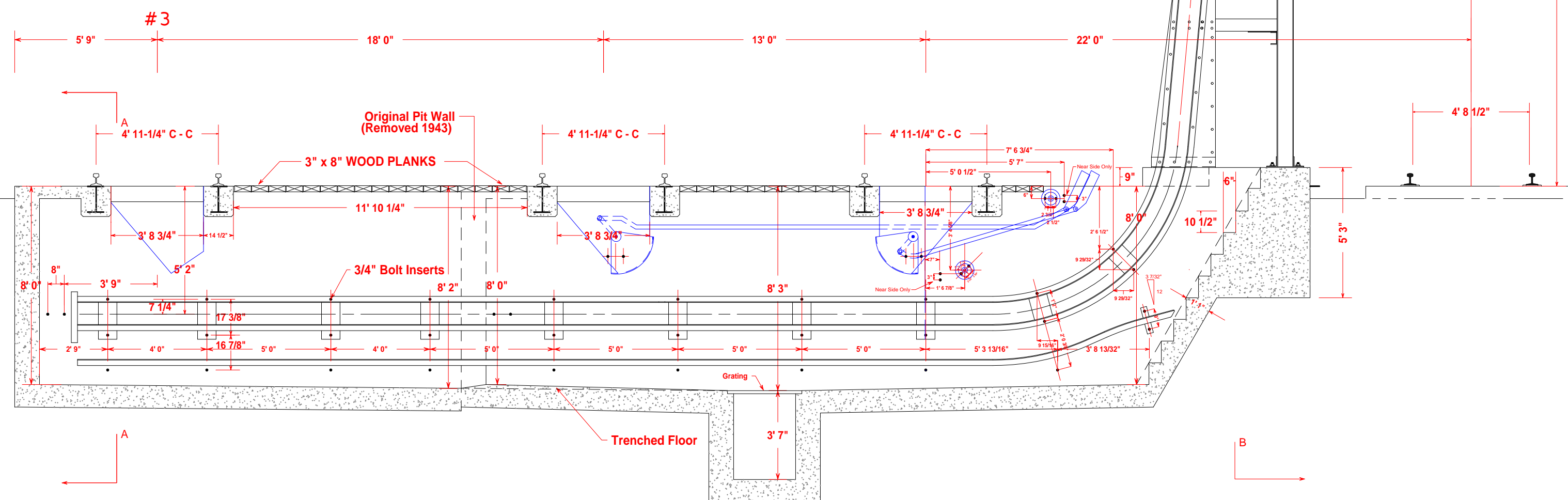
Scale: 1/4" = 1 Ft. DRAWN BY: 6 / 2007
CIRCA 1943 WILLIAM E. SIMONTON III

Items in BLUE are derived by author
and not based on a scaled drawing.

Tracks #1 and #2 had hoppers to catch cinders when
cinder dolley was not positioned to receive the cinders,
but Track #3 did not. Author is not aware that the
hoppers were removed on # 1 and #2 before cinder
conveyor was retired.

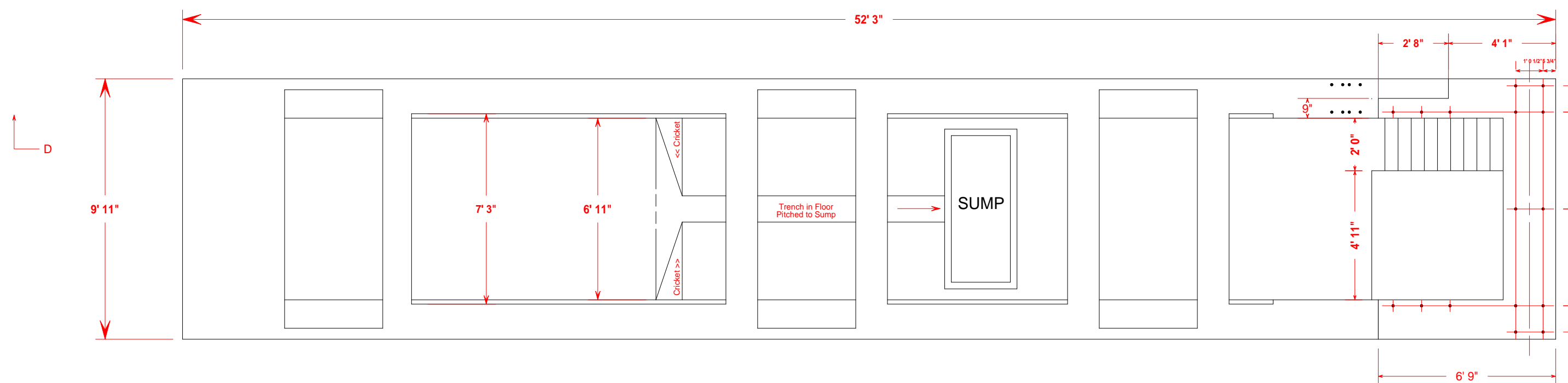


Section A - A

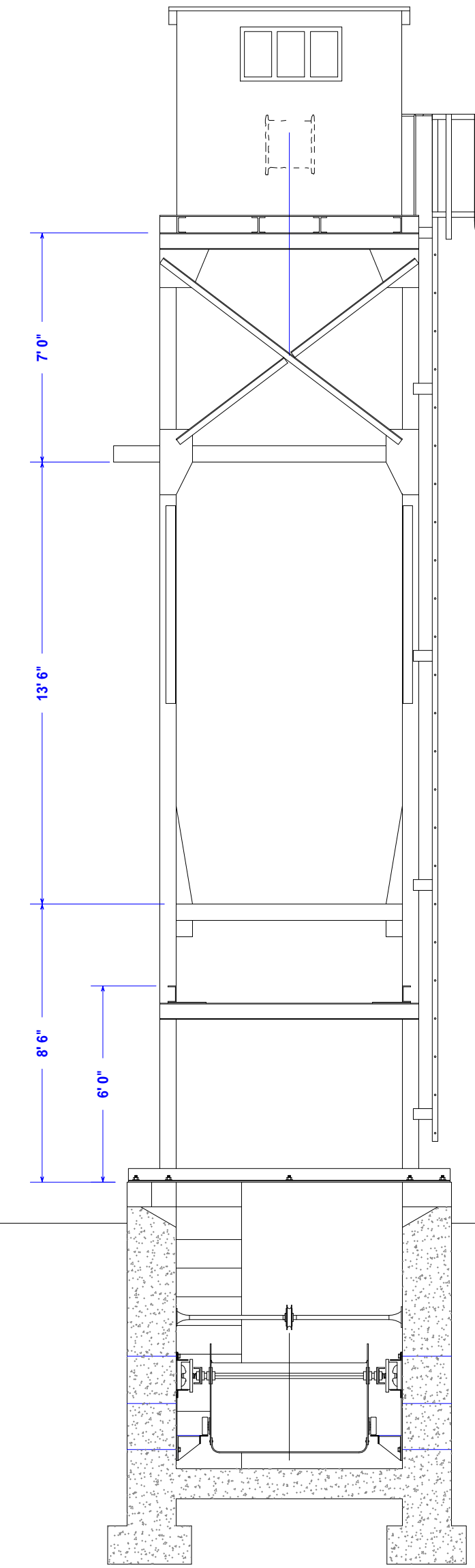


A

B

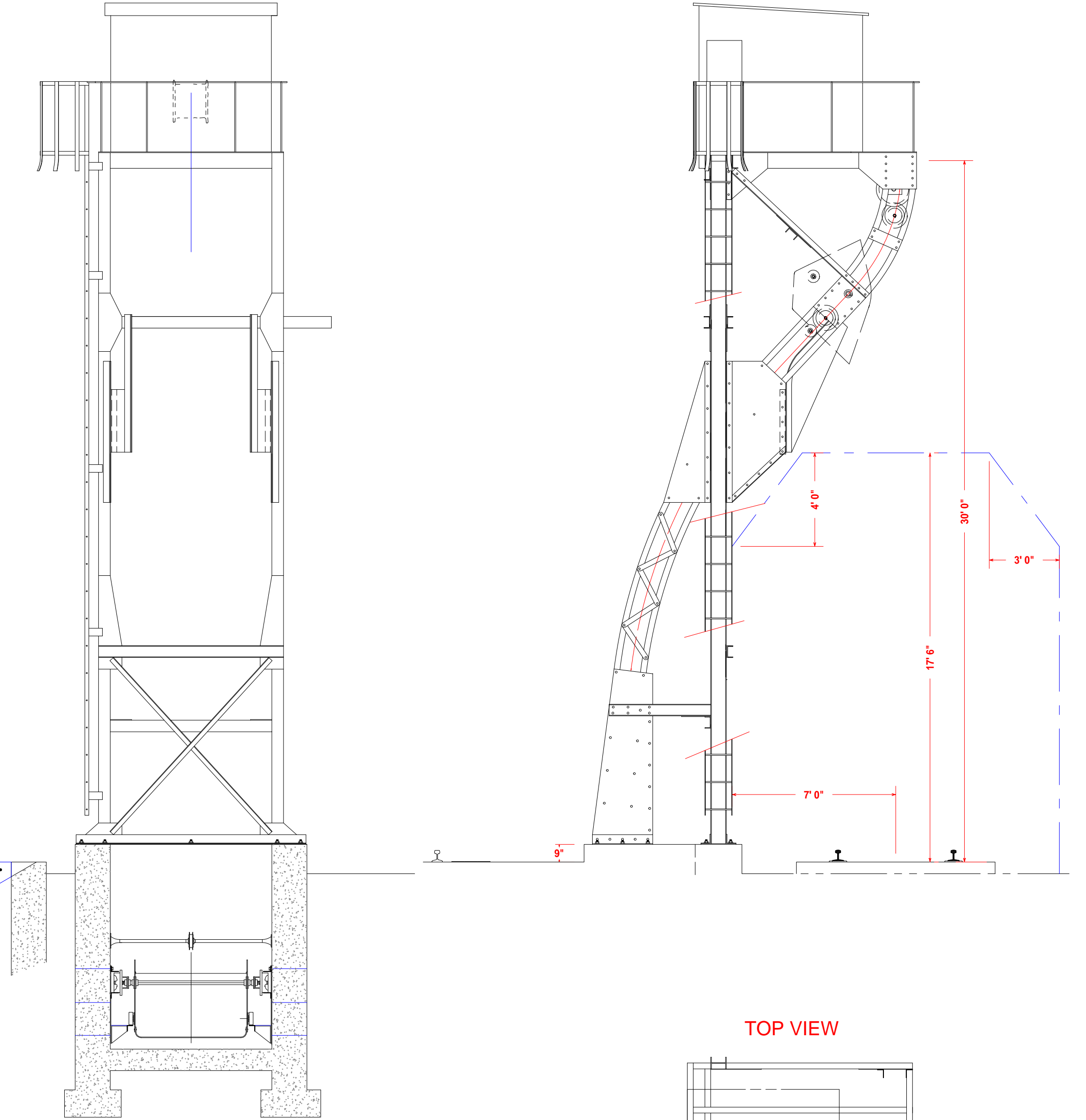


CINDER PIT SIDE ELEVATION



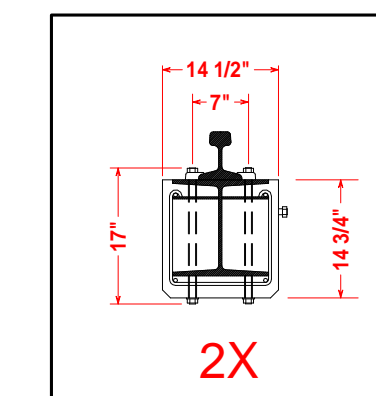
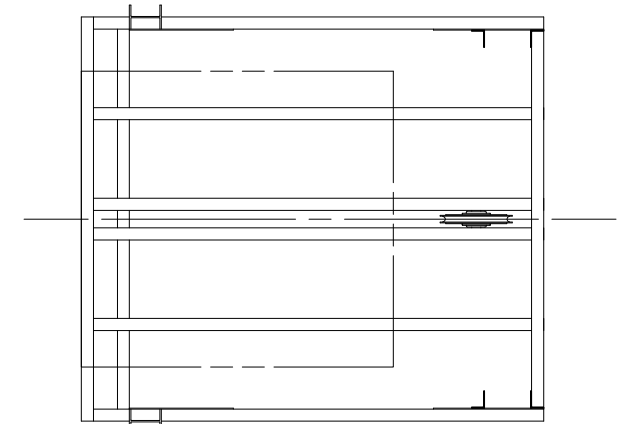
Section B - B

DUMP TRACK SIDE ELEVATION



Section C - C

TOP VIEW



2X

SEE: F-M Dwg. No. 21281₃
May 10, 1929
SEE: C & O Dwg. No. 18096-A
June 24, 1943
Red Dimensions from Drawings
Blue Dimensions Derived and Scaled