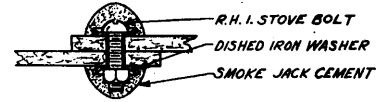


**BILL OF MATERIALS**

PART	DESCRIPTION	QTY	UNITS
A	STACK - 36" CLASS "S" TRANSITE PIPE	1	
G	3/8" C.I. HOOD TO STACK COLLAR (4 PCS)	1	
H	HOOD CORNER - 90° QUADRANT - 36" PIPE	2	
J	HOOD CORNER - 90° QUADRANT - 36" PIPE	2	
KA	HOOD SIDE - BOTTOM - 1/2" FLAT TRANSITE	2	
KB	HOOD SIDE - BOTTOM - 1/2" FLAT TRANSITE	2	
KL	HOOD SIDE - TOP - 1/2" FLAT TRANSITE	2	
KR	HOOD SIDE - TOP - 1/2" FLAT TRANSITE	2	
L	6 1/4" BATTEN - 1/2" THICK TRANSITE	2	
LA	6 1/4" BATTEN - 1/2" THK. FLAT TRANSITE	2	
M	MOULDED BATTEN - TAPERED - 3/4" THICK	2	
PL	6 1/4" MOULDED BATTEN - 1/2" THK. (2 PCS)	2	
PR	6 1/4" MOULDED BATTEN - 1/2" THK. (2 PCS)	2	
T	6 1/4" BATTEN - 1/2" THK. FLAT TRANSITE	2	
W	3/8" X 2 1/4" R.H.I. STOVE BOLTS & NUTS	60	
X	3/8" X 1 3/4" R.H.I. STOVE BOLTS & NUTS	105	
Y	3/8" X 2" R.H.I. STOVE BOLTS & NUTS	165	
-	1 3/8" X 1 1/4" DISHED IRON WASHERS	675	
Z	1/2" X 2 1/2" SQ. HD. MACHINE BOLTS, NUTS AND LOCK WASHERS.	4	
-	GALVANIC VARNISH	GAL.	1/4
-	SMOKE JACK CEMENT	LBS.	4.5
-	ANGLE IRON STIFFENER - 6" X 3 1/2" X 3/8"		2

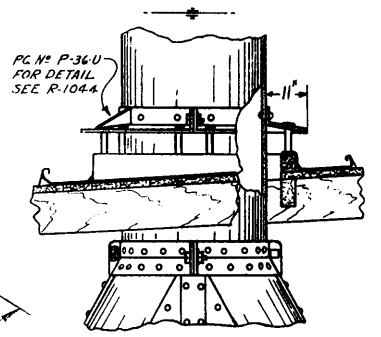
**NOTE:**  
 ALL JACKS ARE FURNISHED WITH PARTS PLAINLY MARKED AS SHOWN.  
 PAINT ALL METAL PARTS WITH 2 COATS OF J-M GALVANIC VARNISH.



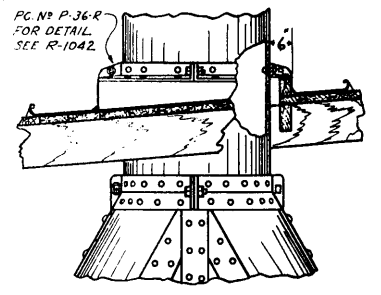
PROTECT ALL NUTS AND BOLTS WITH A COVERING OF J-M SMOKE JACK CEMENT APPLIED WITH A BUTTON HEAD MOULD. APPLY THE DISHED WASHERS AS SHOWN TO HOLD THE CEMENT.

FOR METHOD OF HANGING CLASS "P" JACKS, SEE DRAWING R-1046.  
 FOR CAPS, SEE DRAWING R-1040.  
 FOR DAMPERS, SEE DRAWING R-1041.

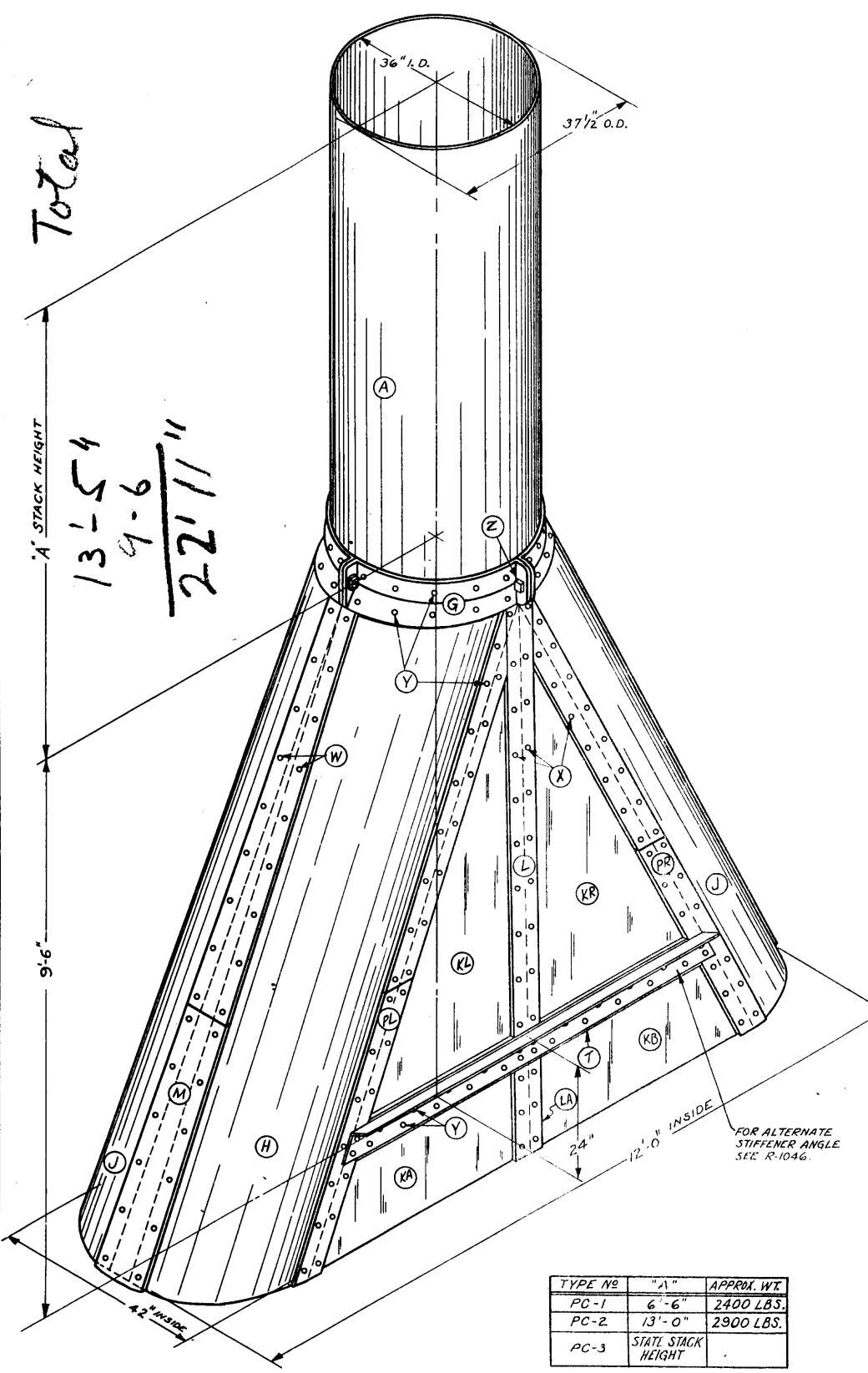
**TO ORDER PARTS:**  
 STATE TYPE OF JACK, LINE NUMBER AND THE LETTER IDENTIFICATION OF PART DESIRED.



VIEW USING CAST IRON UMBRELLA FOR VENTILATING JACK



VIEW USING CAST IRON FLASHING PLATE FOR NON-VENTILATING JACK



TYPE No	"A" STACK HEIGHT	APPROX. WT.
PC-1	6'-6"	2400 LBS.
PC-2	13'-0"	2900 LBS.
PC-3	STATL STACK HEIGHT	

**JOHNS-MANVILLE**  
 TRANSPORTATION DEPARTMENT

**TRANSITE SMOKE JACK**  
 TYPE - PC

SCALE  
 DATE 2-23-35  
 REVISIONS  
 D- REDRAWN AND REDESIGNED. 12-4-36

DRAWN BY NM

APPROVED *[Signature]*

**R-1025 D**