

THE CHESAPEAKE AND OHIO RAILWAY COMPANY

TOOL HOUSE
SECTION 122
AT
HINTON

SUMMERS COUNTY WEST VIRGINIA

HINTON DIVISION --- NEW RIVER SUB-DIV.

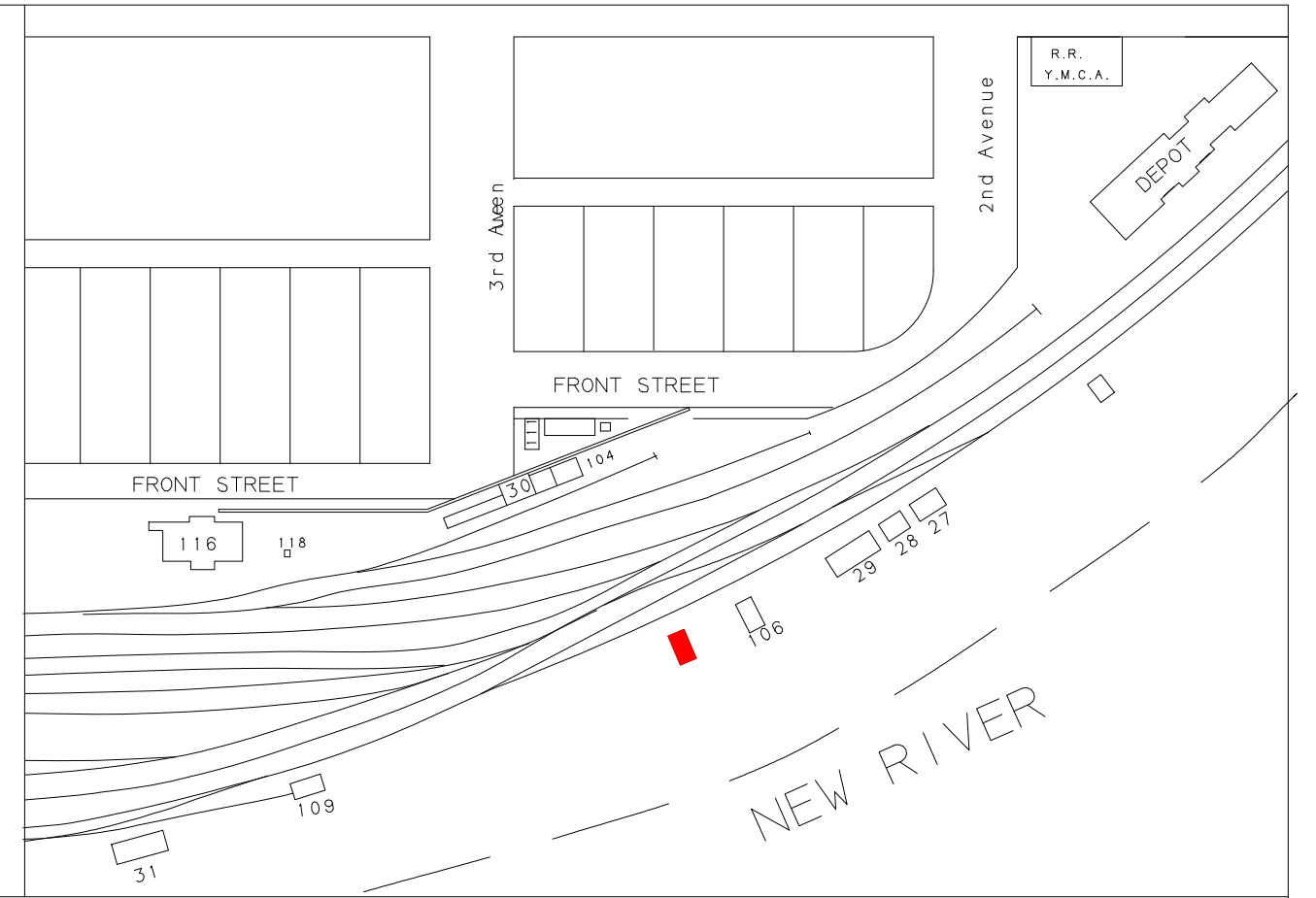
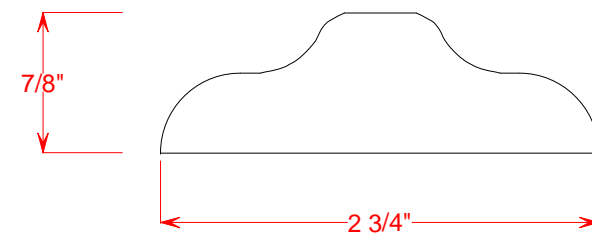
SCALE: 1/4" = 1' DRAWN BY 4/87
CIRCA 1946 WILLIAM E. SIMONTON III

Copies of these drawings may be made for noncommercial use only

**NO ACCIDENTS
THIS YEAR**

White Lettering on Black with White Trim

BATTEN
DETAIL
(Cross Section)

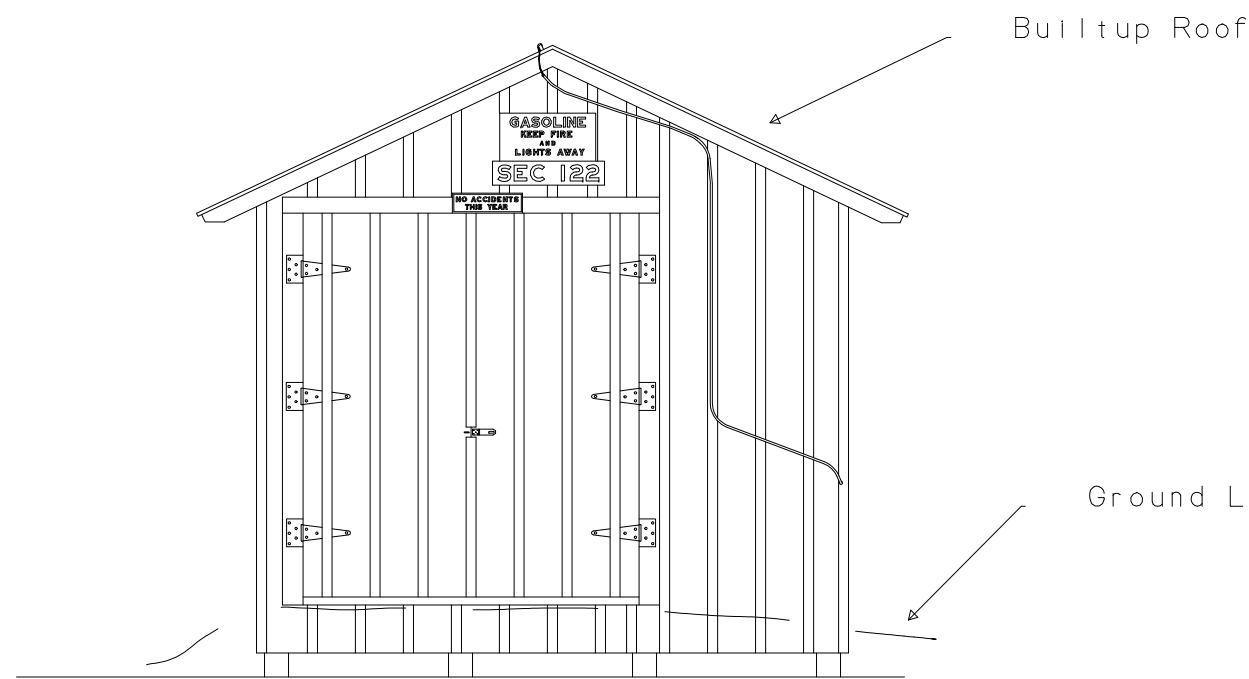


SEC 122

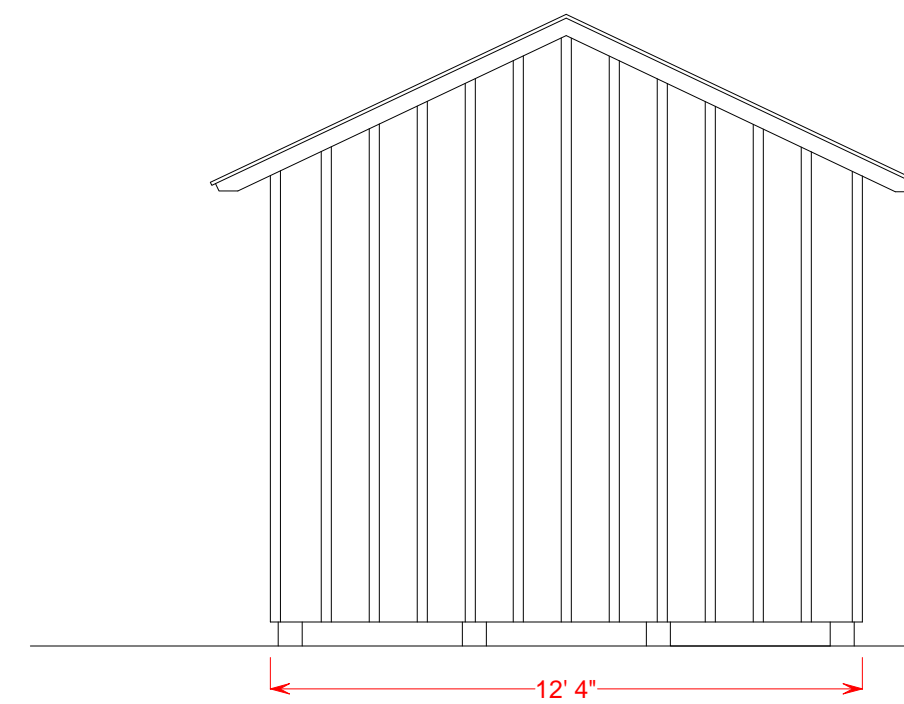
Black Lettering on White Background

**GASOLINE
KEEP FIRE
AND
LIGHTS AWAY**

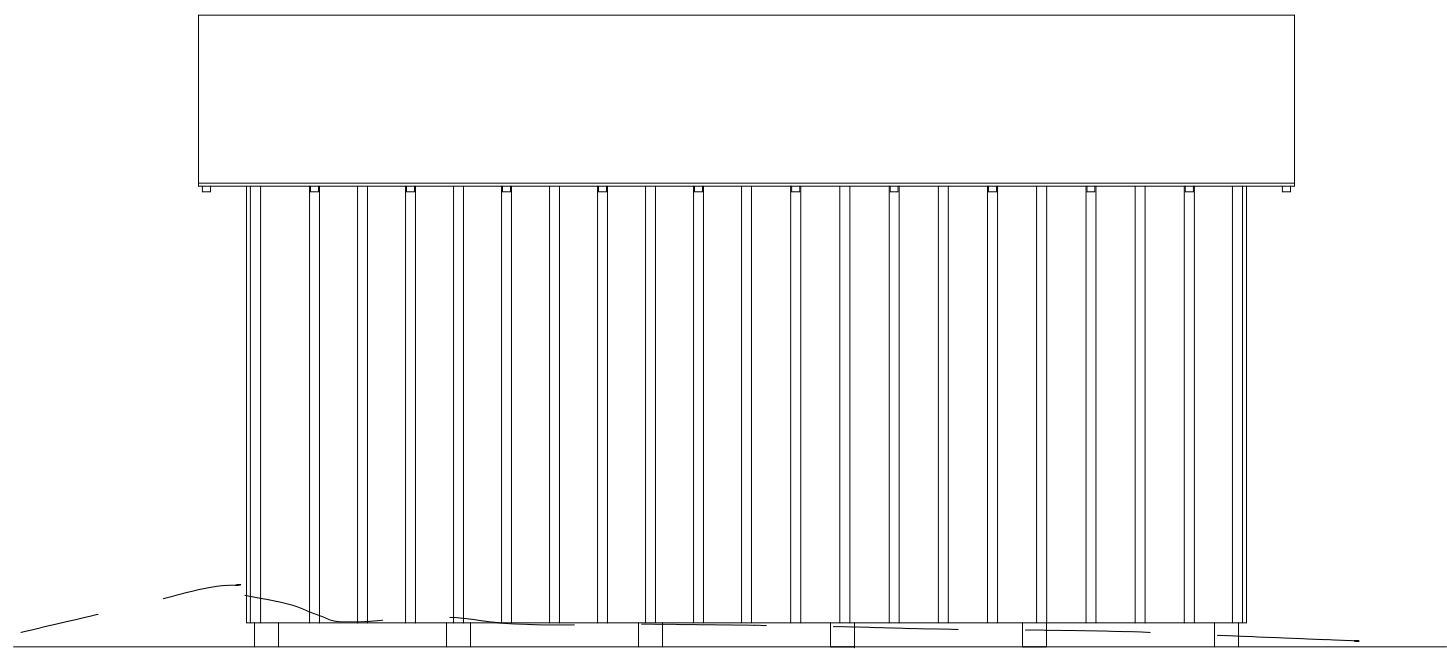
White Lettering on Red Background



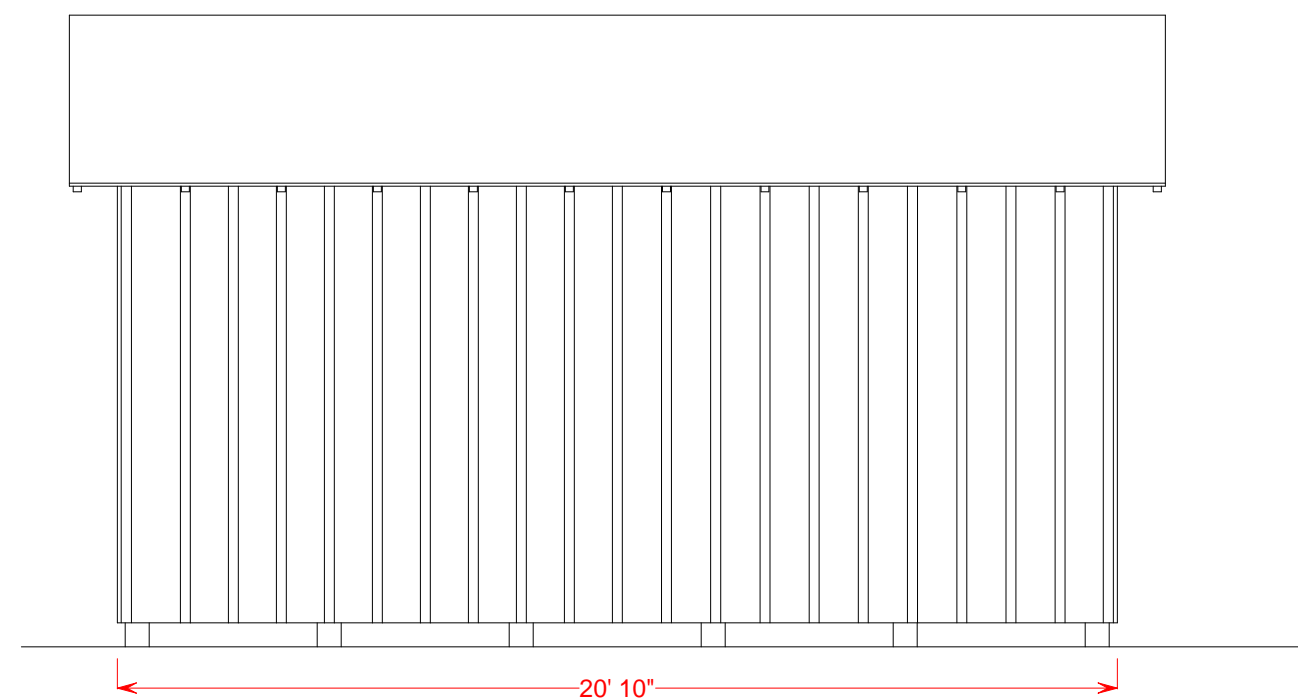
NORTH ELEVATION



SOUTH ELEVATION



WEST ELEVATION



EAST ELEVATION

Structure May Have Been Built Prior to 1916
Structure Razed Late 1986
See C & O Standards S-5 and S-5A

