

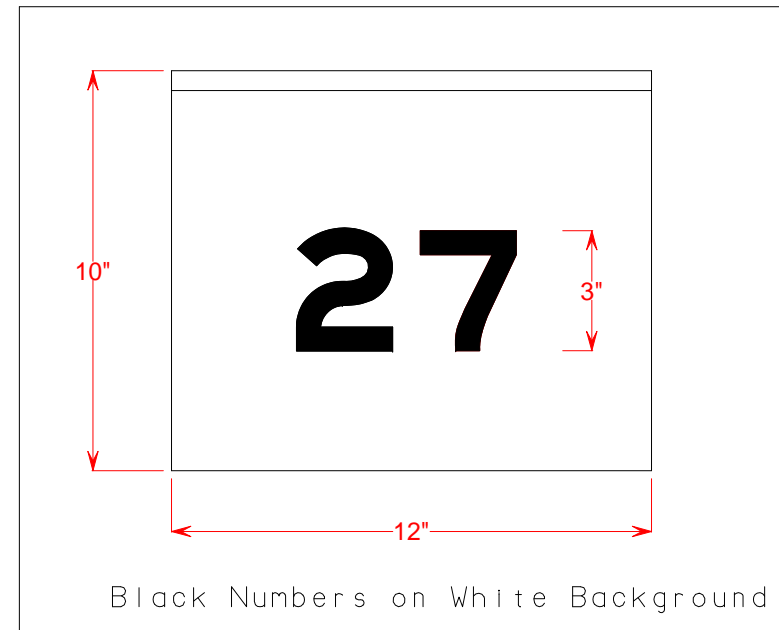
THE CHESAPEAKE AND OHIO RAILWAY COMPANY

SWITCHMEN'S SHANTY & FILE ROOM  
STRUCTURE NO. 27  
AT  
HINTON

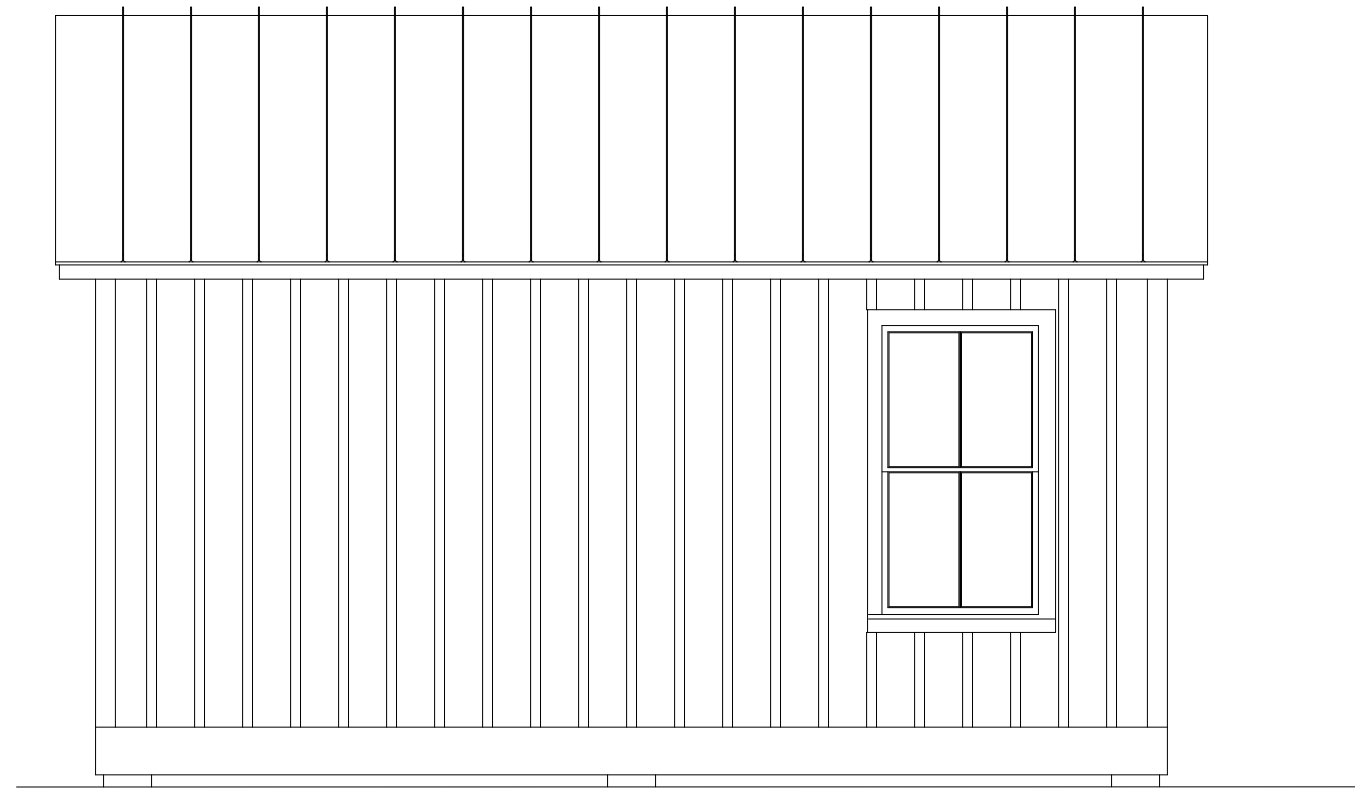
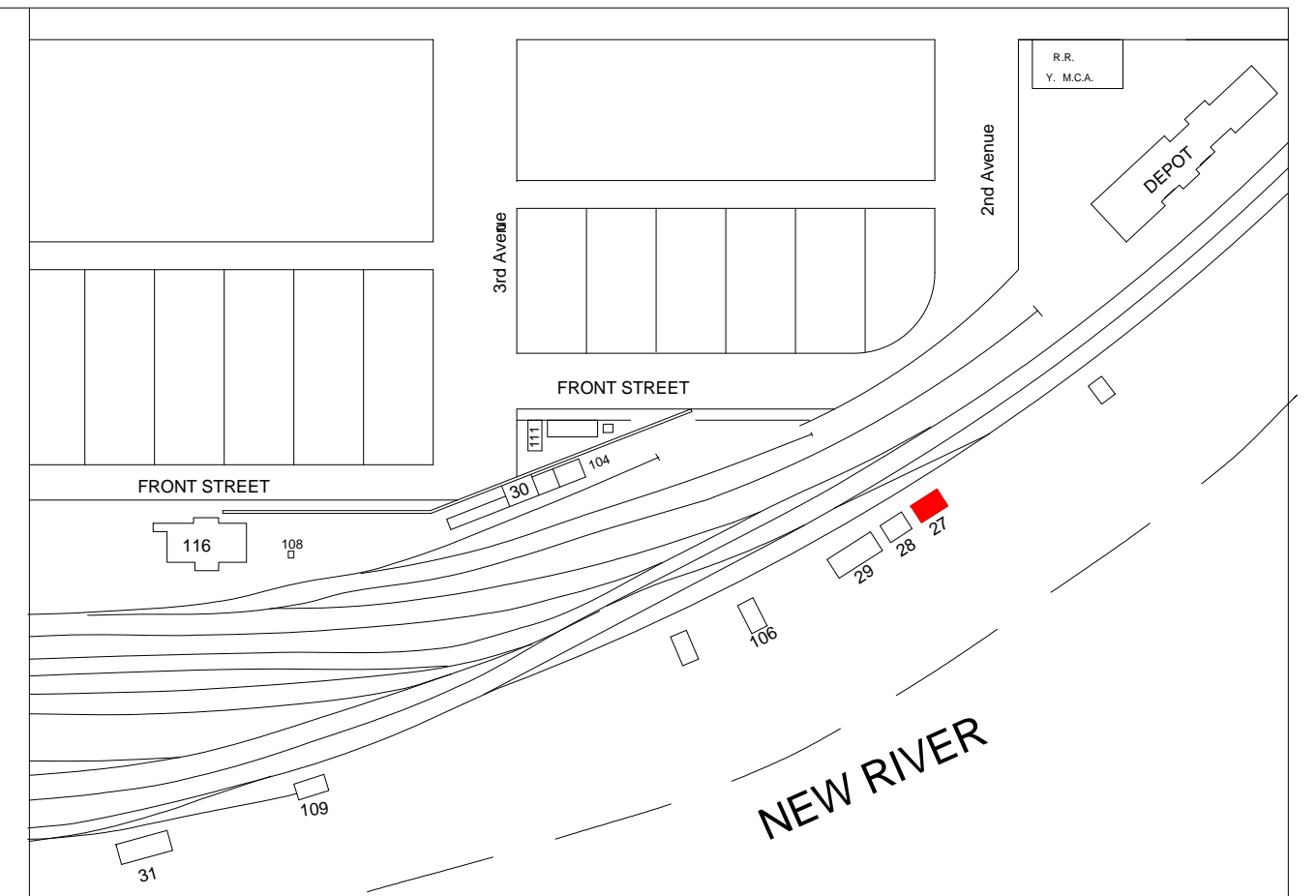
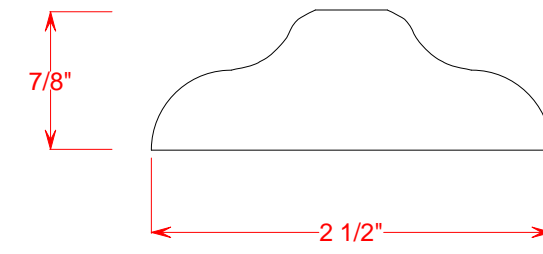
SUMMERS COUNTY WEST VIRGINIA  
HINTON DIVISION --- NEW RIVER SUB-DIV.

SCALE: 1/4" = 1' DRAWN BY 4/87  
CIRCA 1946 WILLIAM E. SIMONTON III

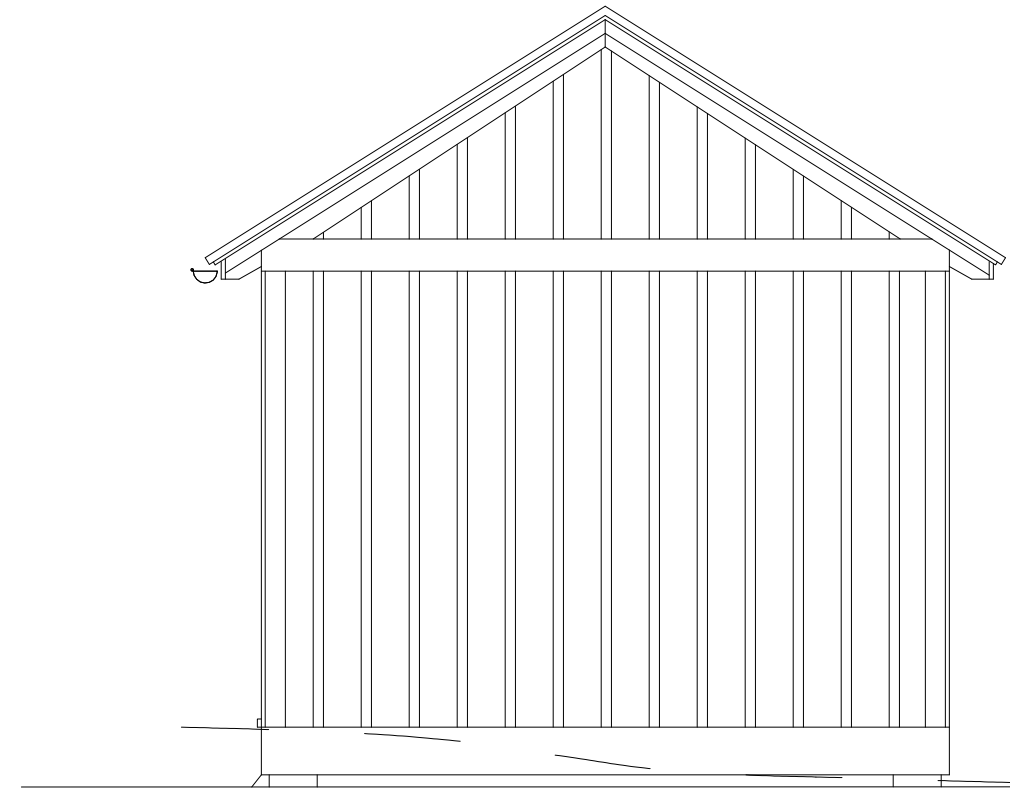
Copies of these drawings may be made for noncommercial use only



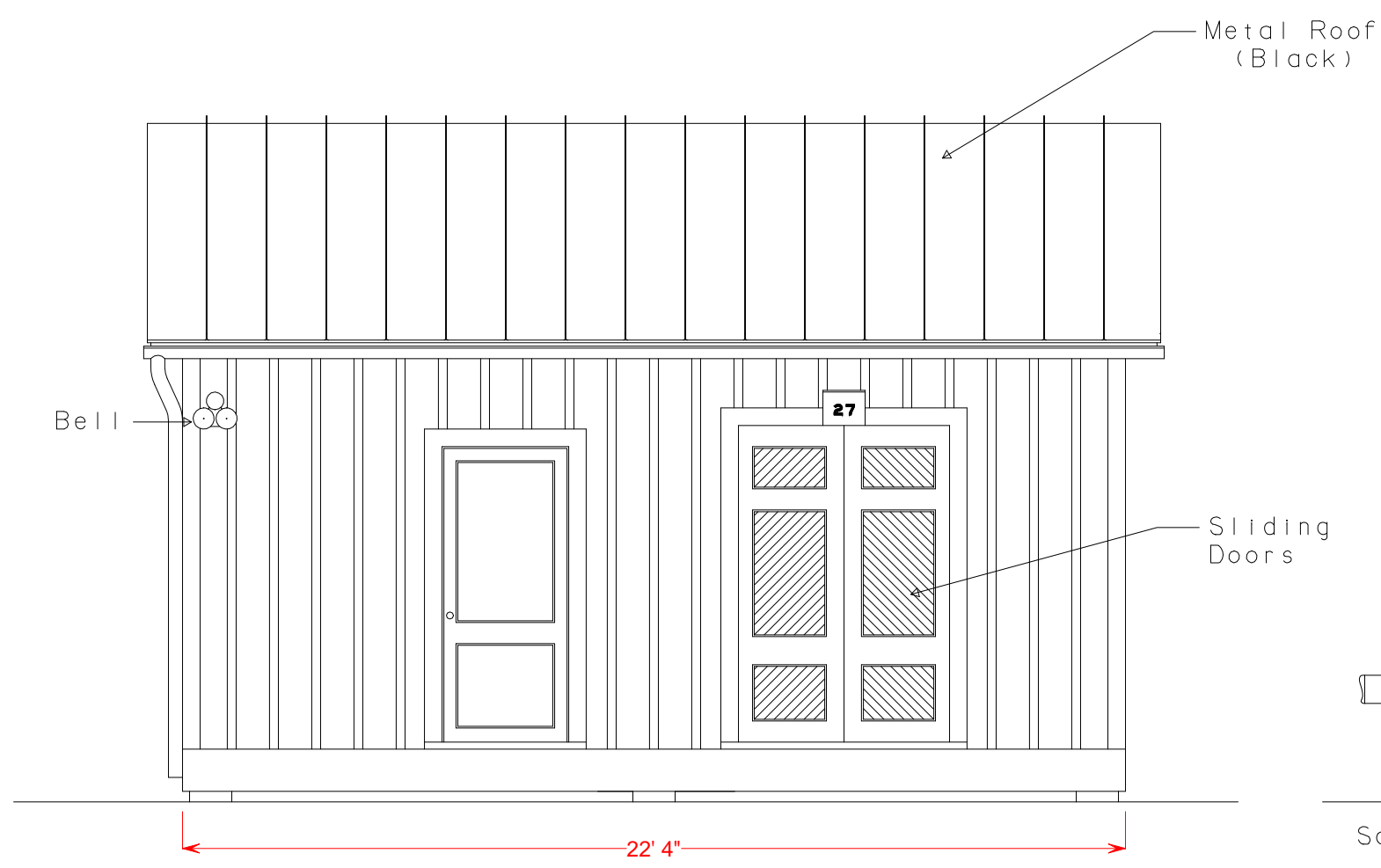
# BATTEN DETAIL (Cross Section)



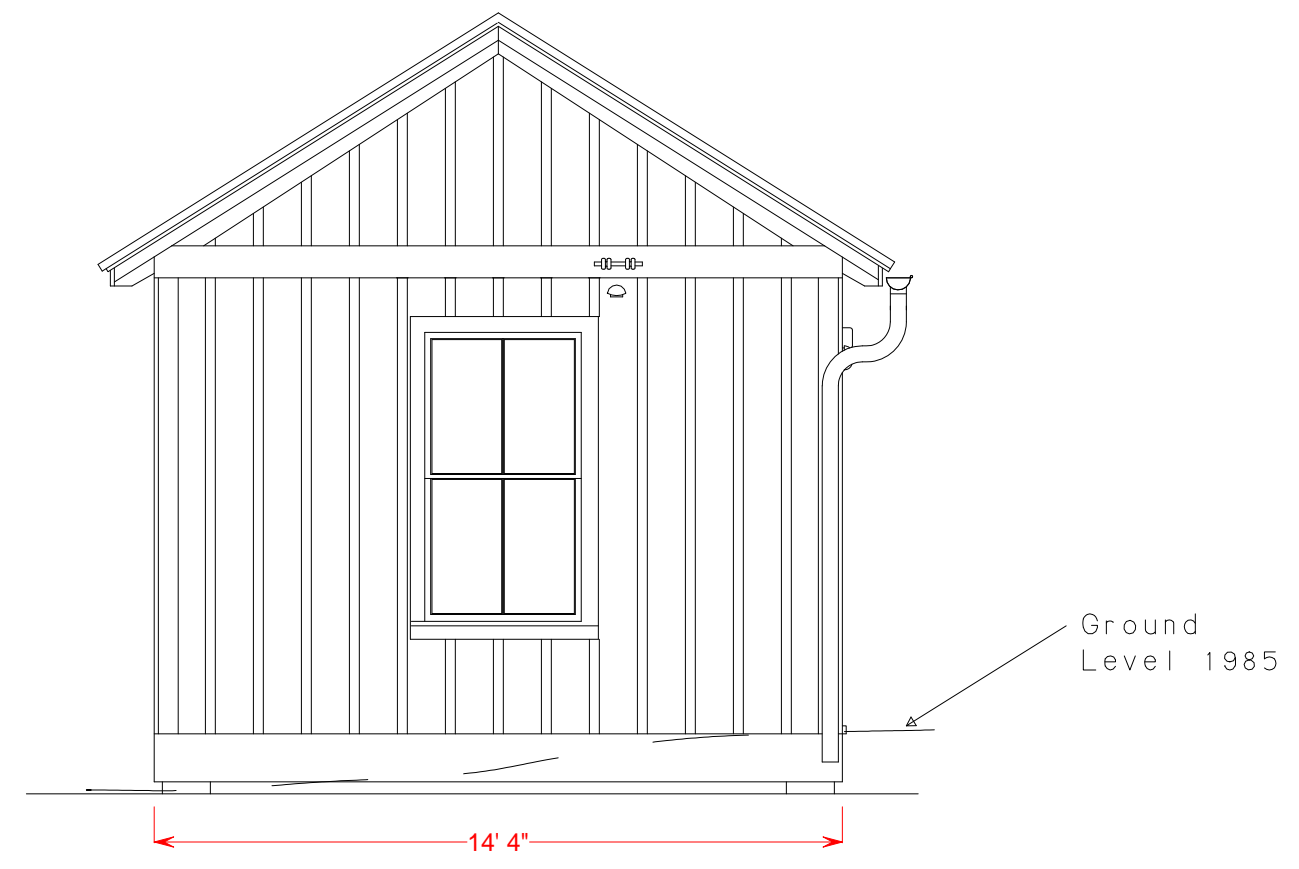
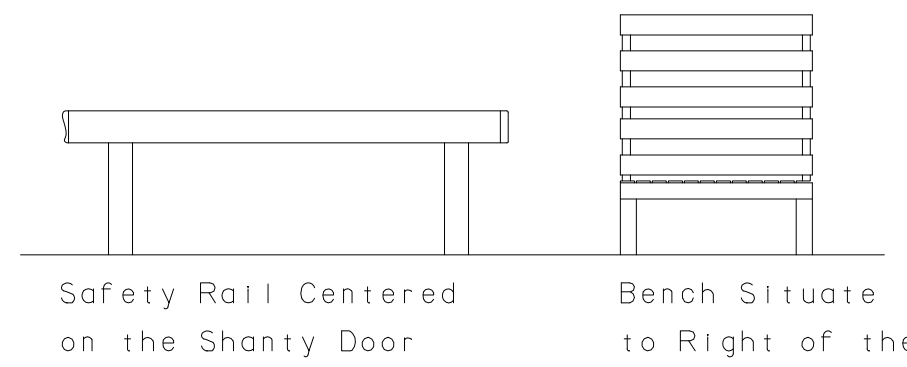
SOUTH ELEVATION



WEST ELEVATION



NORTH ELEVATION



EAST ELEVATION

Structure Built Prior To 1930  
Structure Razed Late 1985

