

THE CHESAPEAKE AND OHIO RAILWAY COMPANY

SIGNAL & WATER SUPPLY HOUSE
STRUCTURE NO. 28
AT
HINTON

SUMMERS COUNTY WEST VIRGINIA

HINTON DIVISION --- NEW RIVER SUB-DIV.

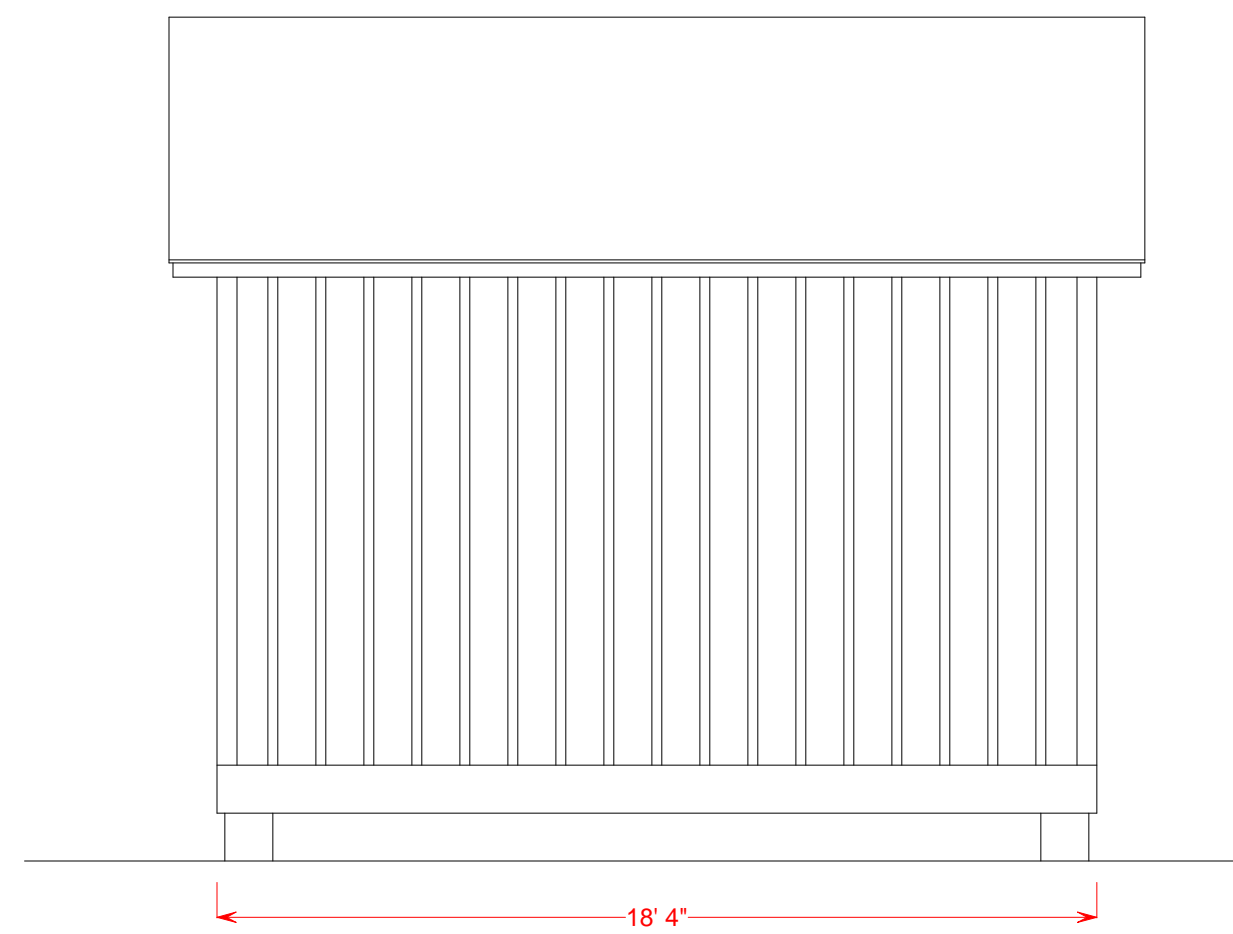
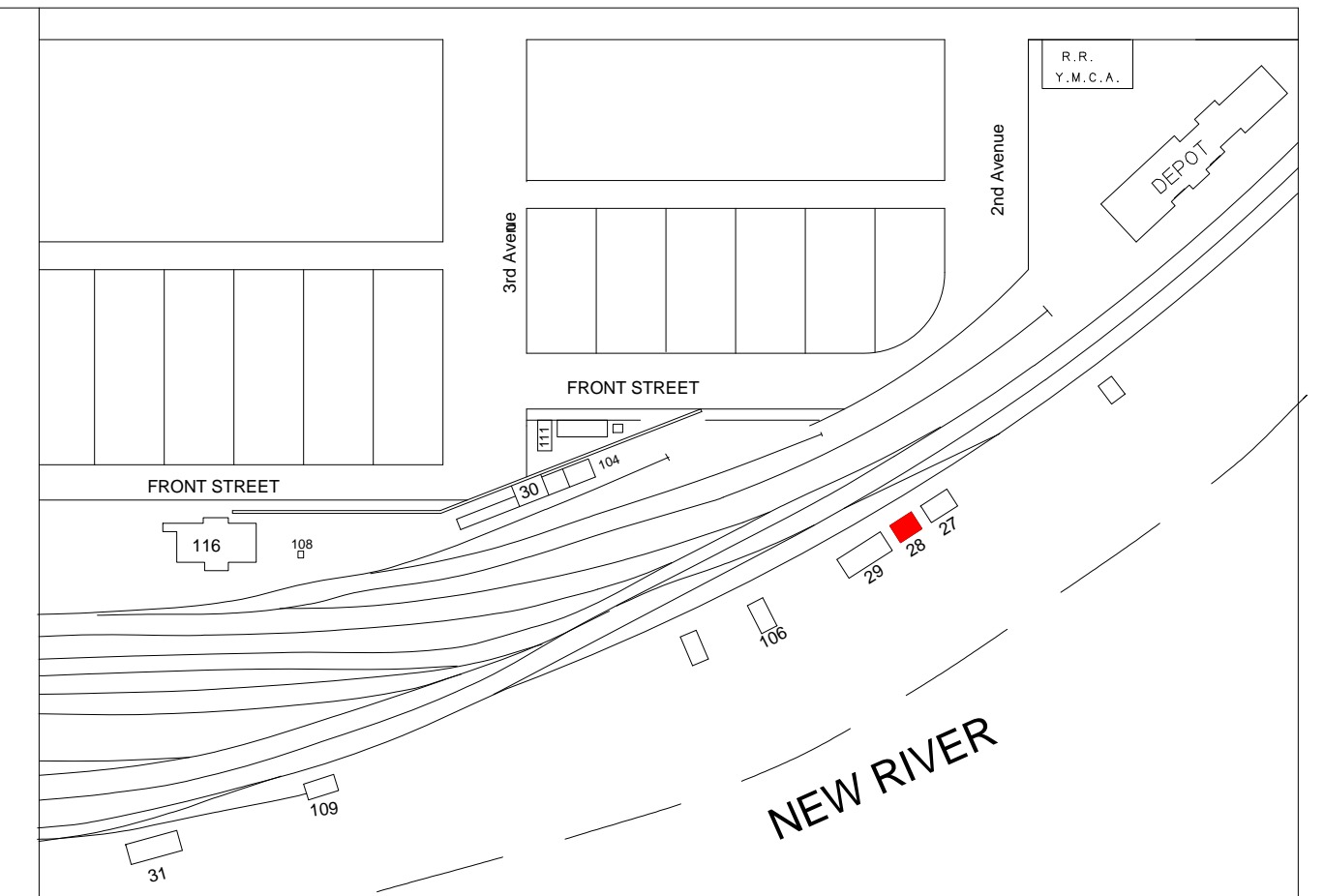
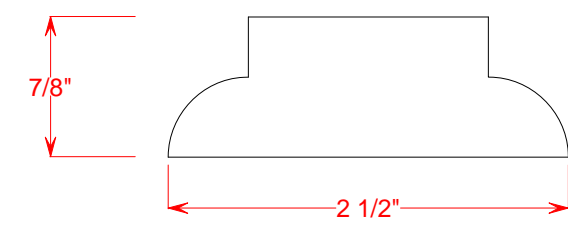
SCALE: 1/4" = 1' DRAWN BY 3/87
CIRCA 1946 WILLIAM E. SIMONTON III

Copies of these drawings may be
made for noncommercial use only

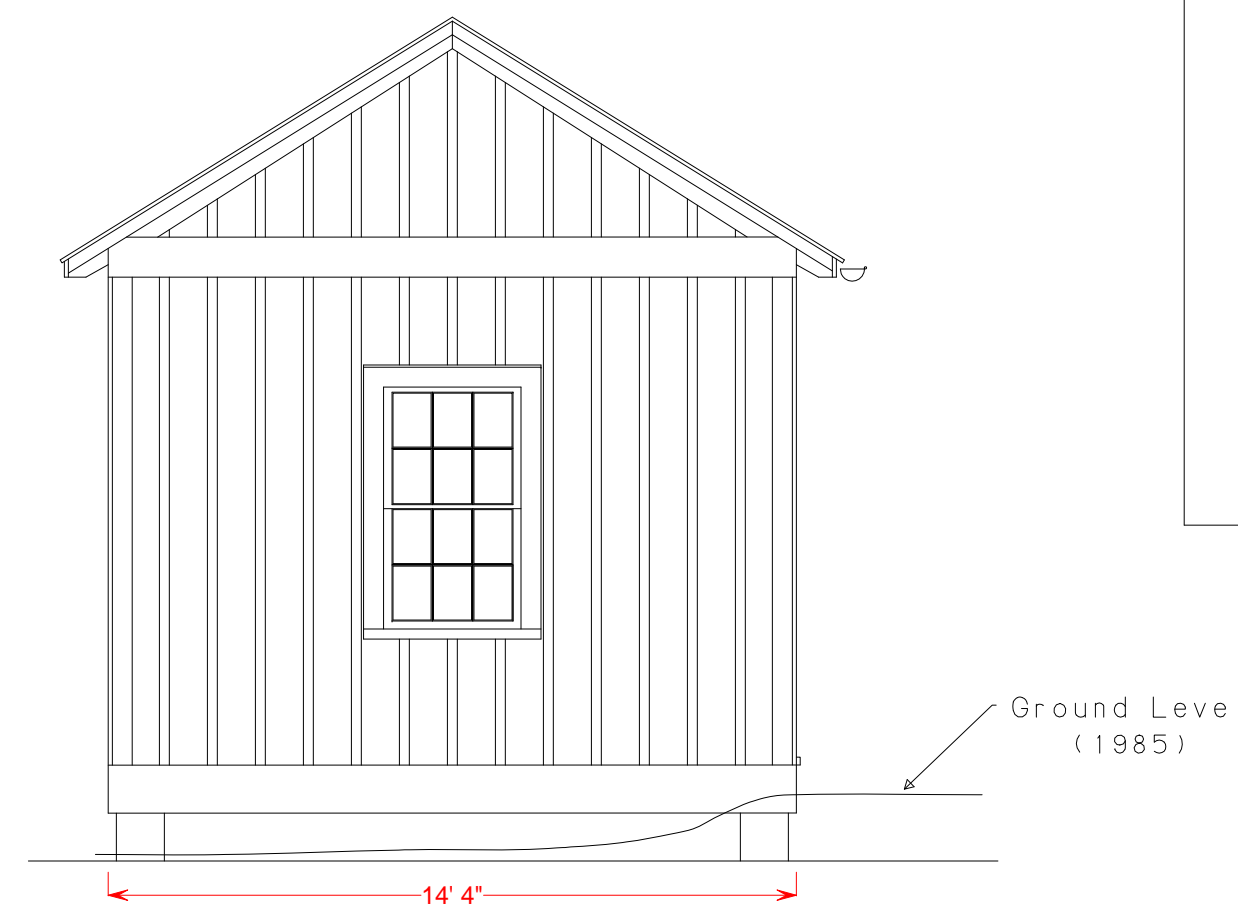
**NO ACCIDENTS
THIS YEAR**

White Lettering on
Black with White Trim

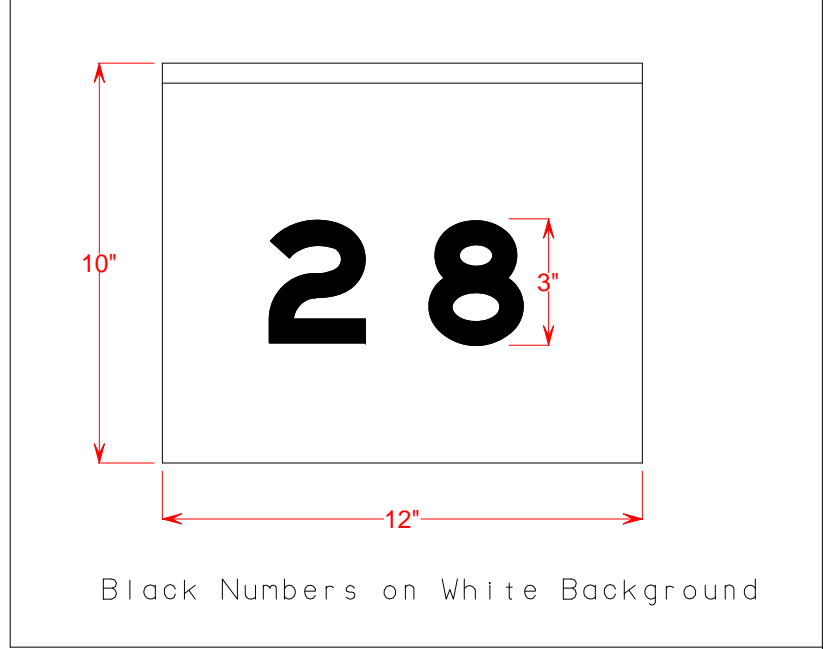
BATTEN
DETAIL
(Cross Section)



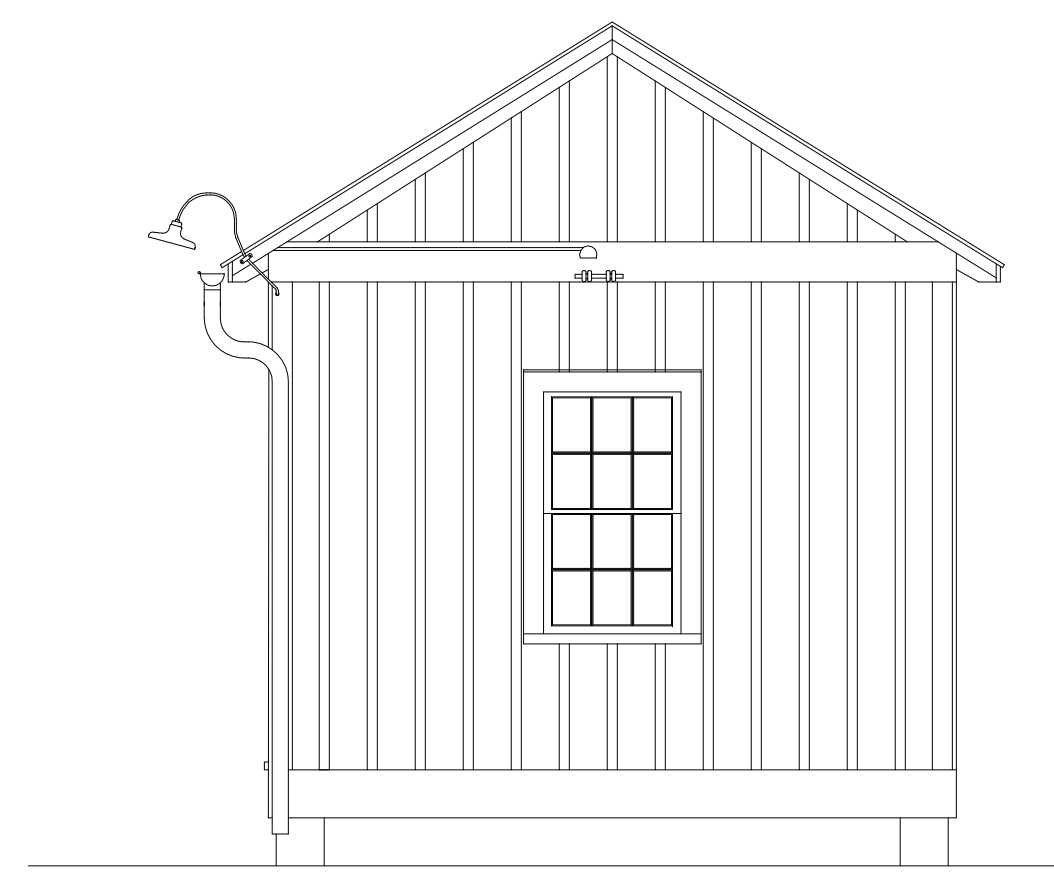
SOUTH ELEVATION



EAST ELEVATION



NORTH ELEVATION



WEST ELEVATION

Structure Built Prior to 1930
Structure Razed Late 1985

