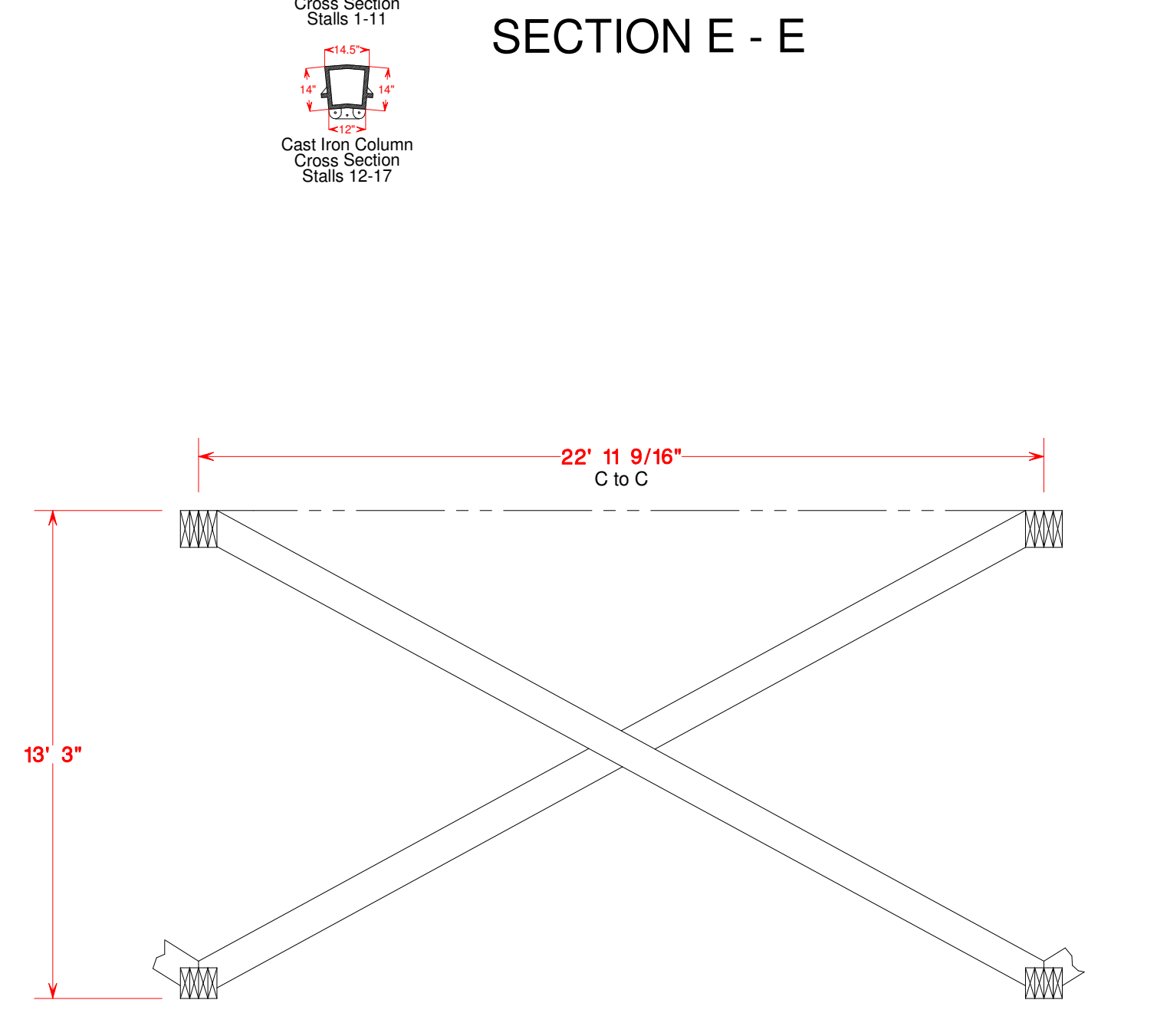
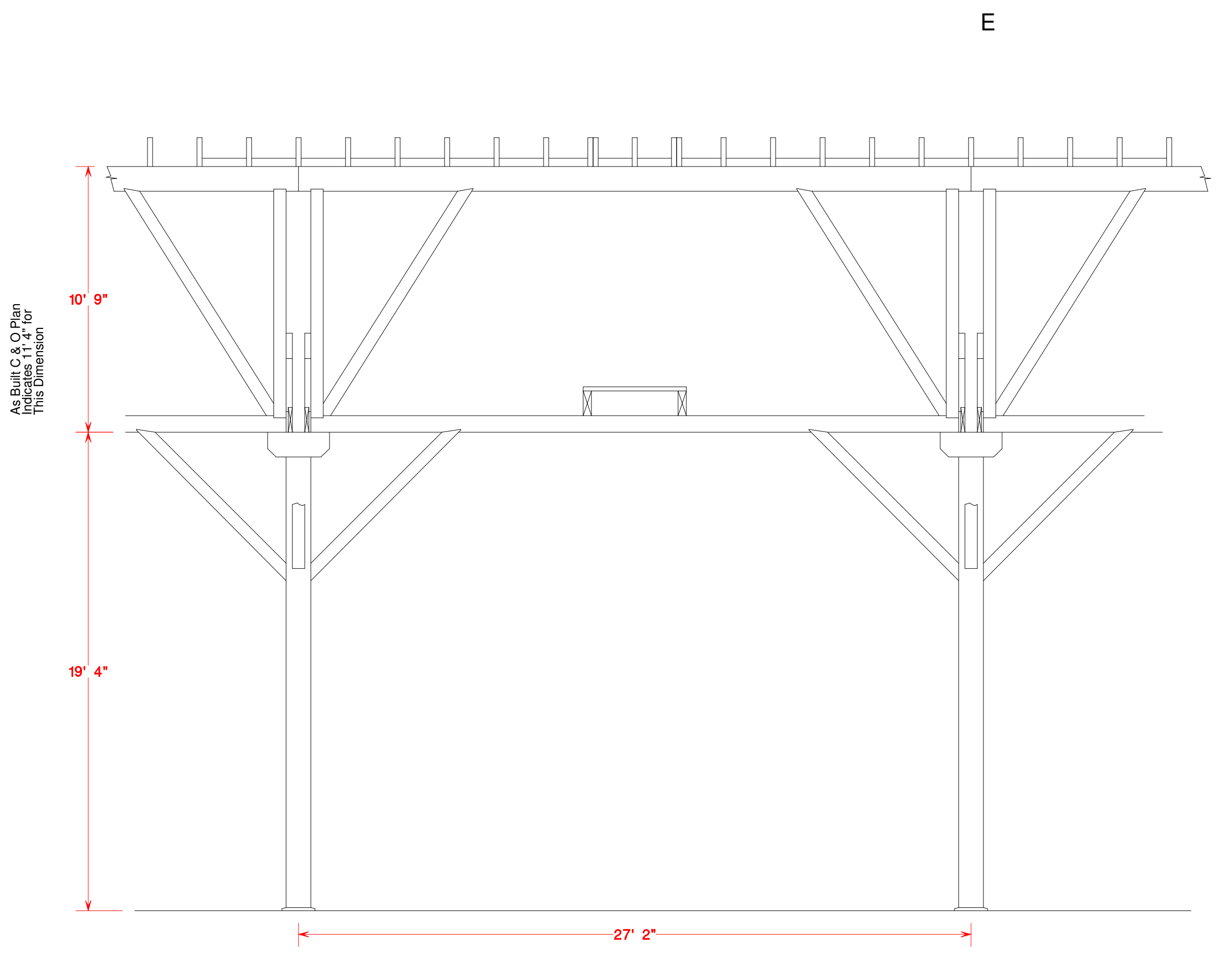
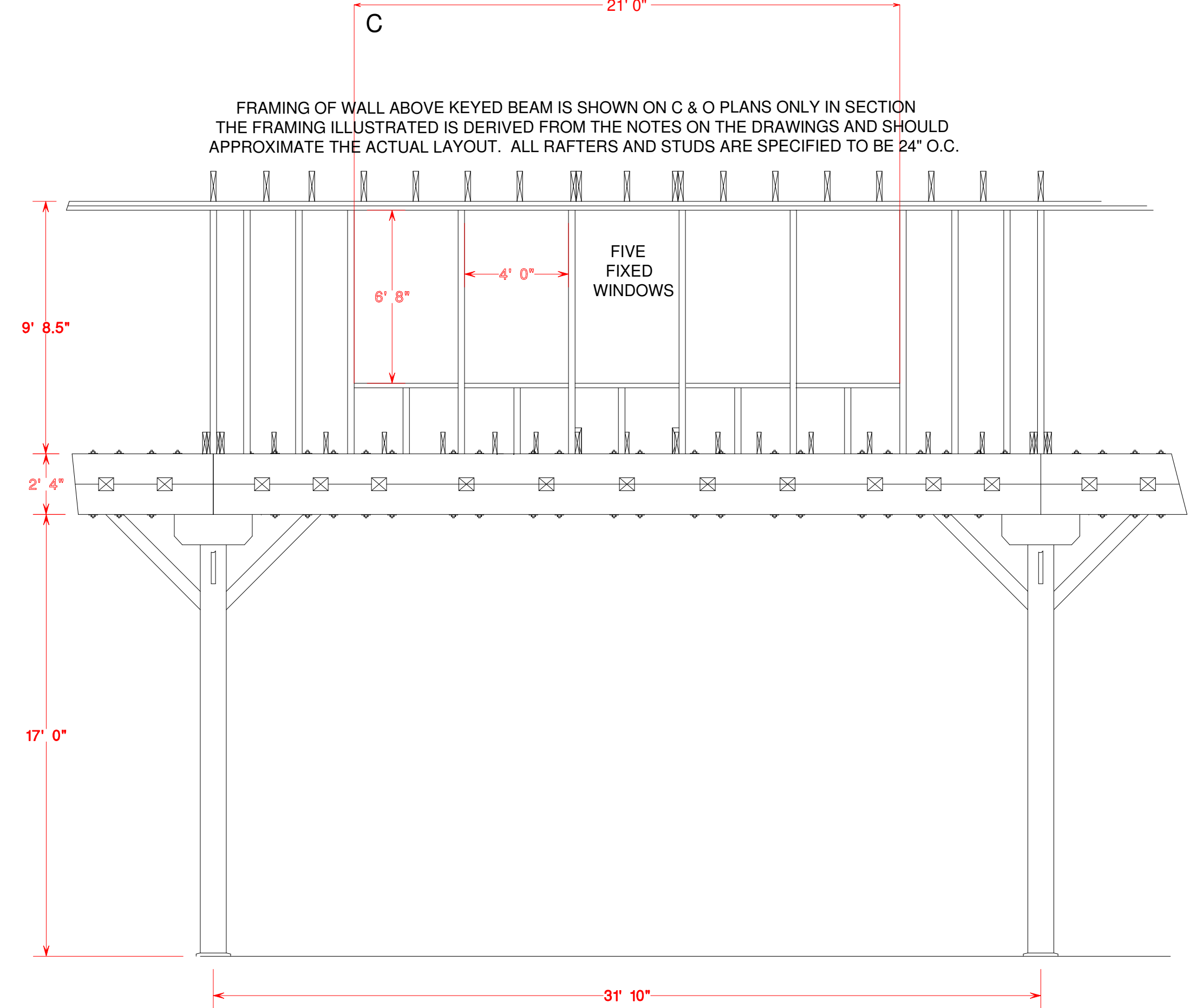
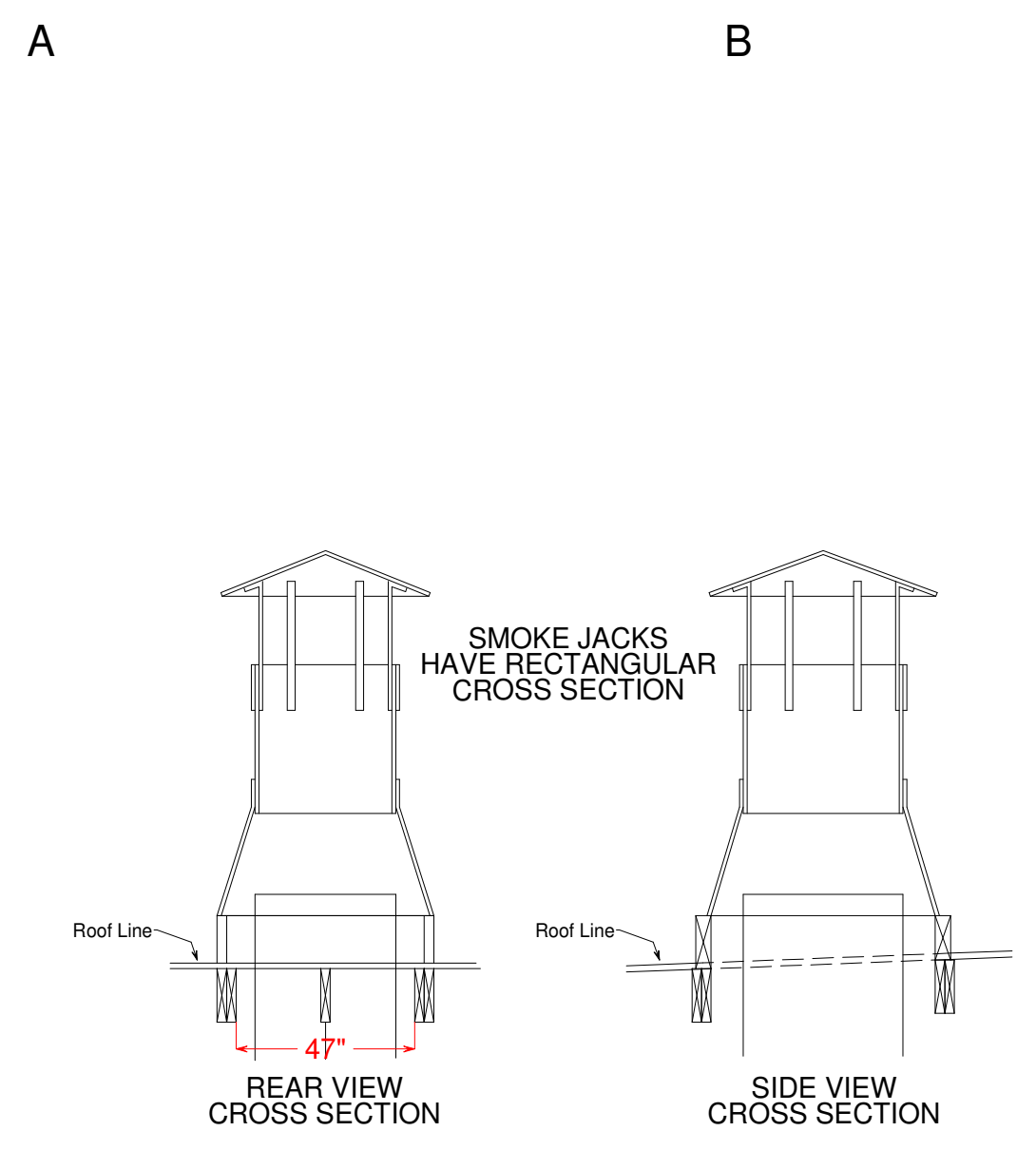
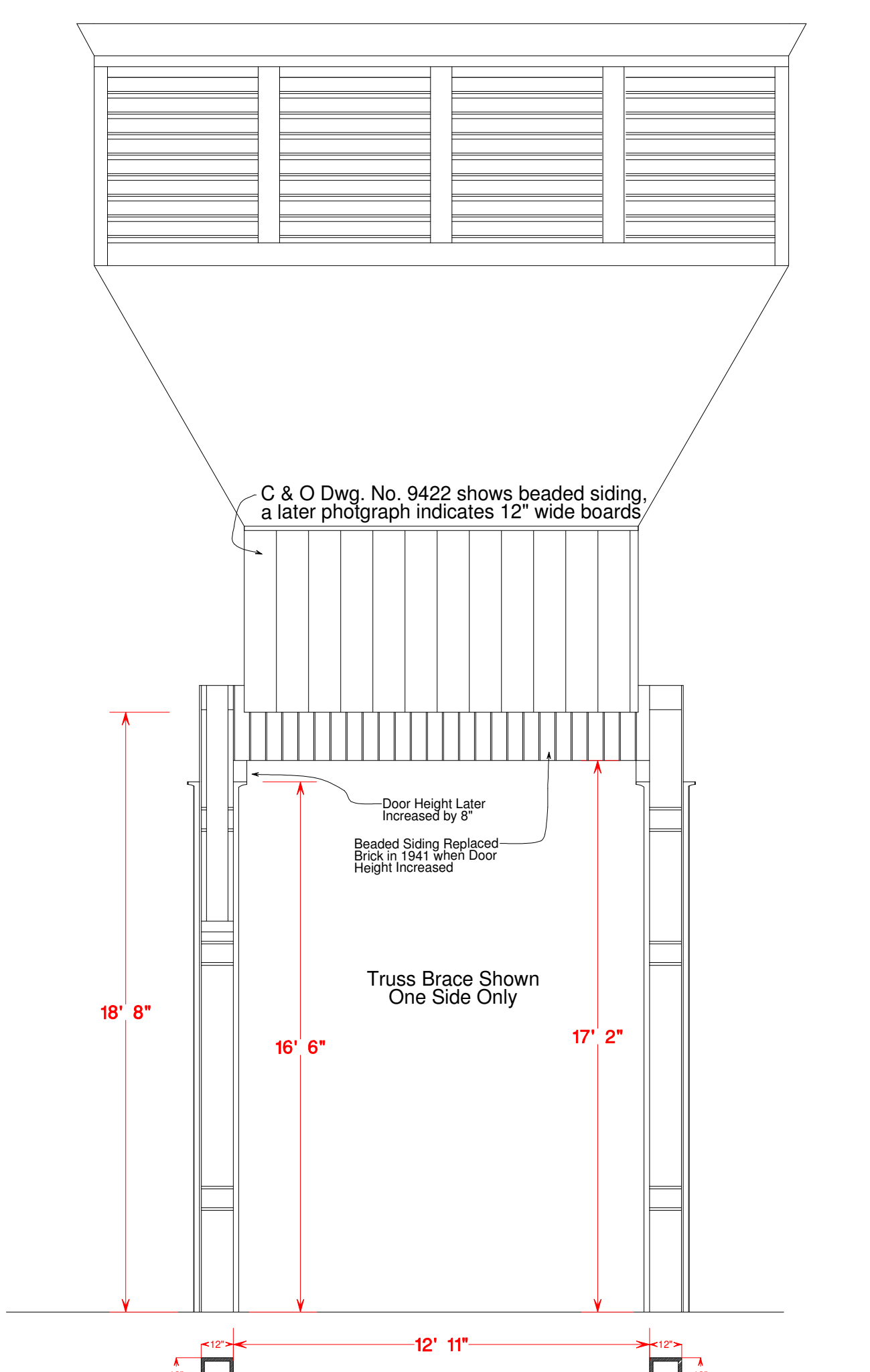
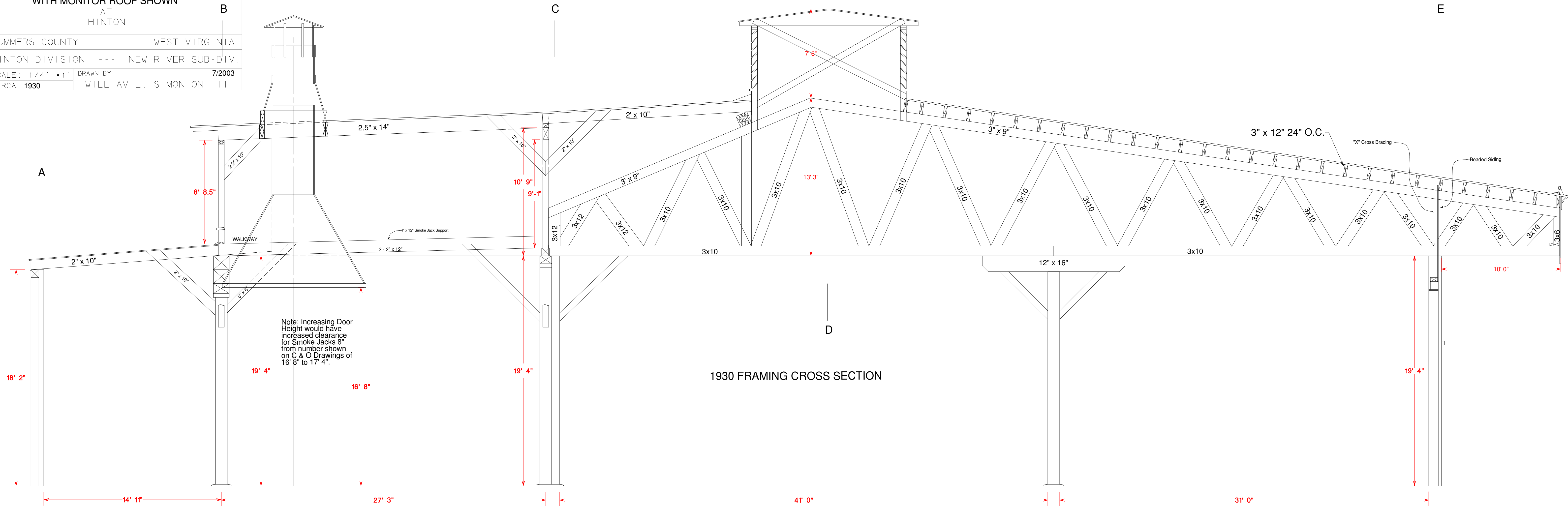


THE CHESAPEAKE AND OHIO RAILWAY COMPANY

**ROOF TRUSSES 1928-29 ADDITION  
WITH MONITOR ROOF SHOWN  
AT  
HINTON**

SUMMERS COUNTY WEST VIRGINIA  
HINTON DIVISION --- NEW RIVER SUB-DIV.  
SCALE: 1/4" = 1' DRAWN BY 7/2003  
CIRCA 1930 WILLIAM E. SIMONTON III



ILLUSTRATED X BRACING BASED UPON PHOTOGRAPH AND SHOULD ONLY BE CONSIDERED TYPICAL