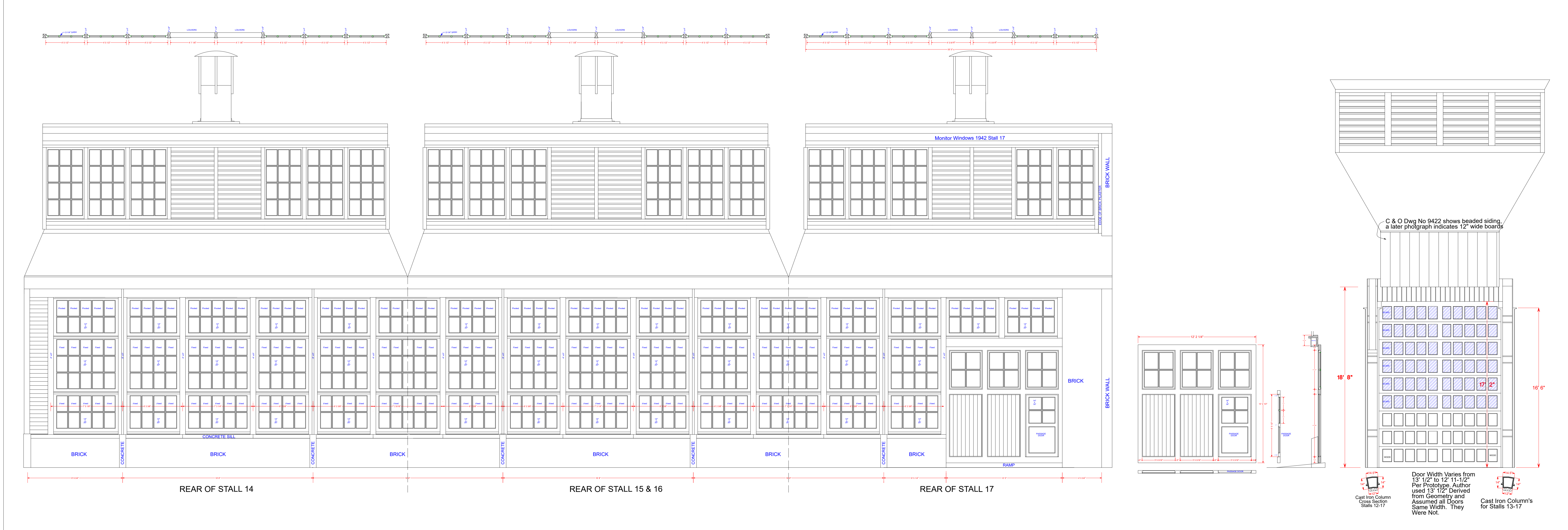
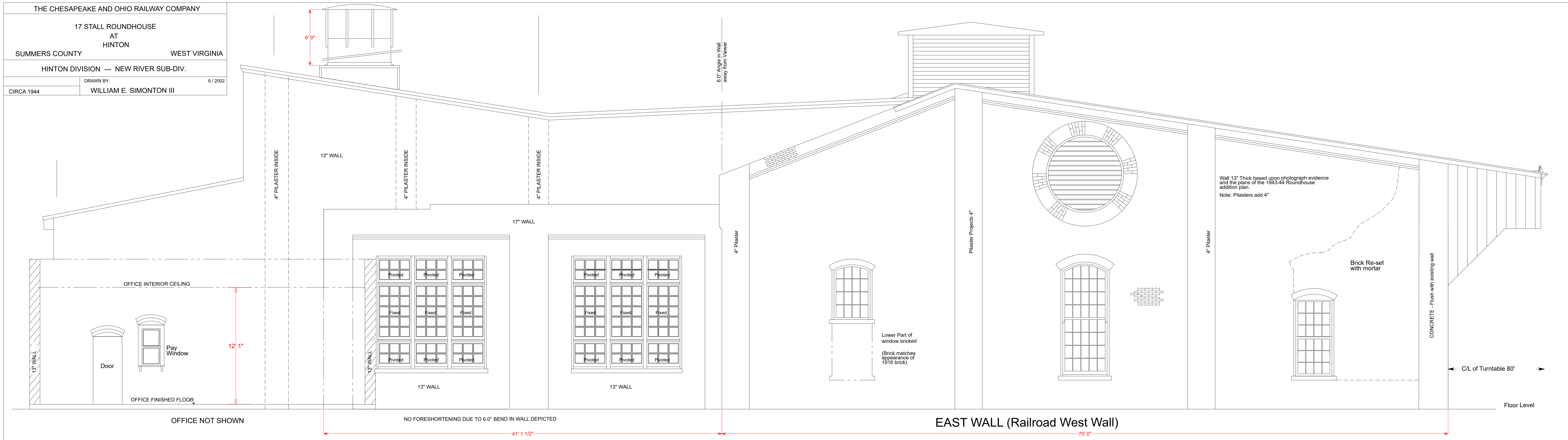


THE CHESAPEAKE AND OHIO RAILWAY COMPANY  
 17 STALL ROUNDHOUSE  
 AT HINTON  
 SUMMERS COUNTY WEST VIRGINIA  
 HINTON DIVISION -- NEW RIVER SUB-DIV.  
 DRAWN BY: 9 / 2002  
 WILLIAM E. SIMONTON III  
 CIRCA 1944



Door Width Varies from 13' 1/2" to 12' 11-1/2" Per Prototype. Author used 13' 1/2". Derived from Geometry and Assumed all Doors Same Width. They Were Not.  
 Cast Iron Column Cross Section Stalls 12-17  
 Cast Iron Column's for Stalls 13-17