

THE CHESAPEAKE AND OHIO RAILWAY COMPANY

PIT PROFILE STALLS 1 THRU 11  
AT  
HINTON

SUMMERS COUNTY

WEST VIRGINIA

HINTON DIVISION --- NEW RIVER SUB-DIV.

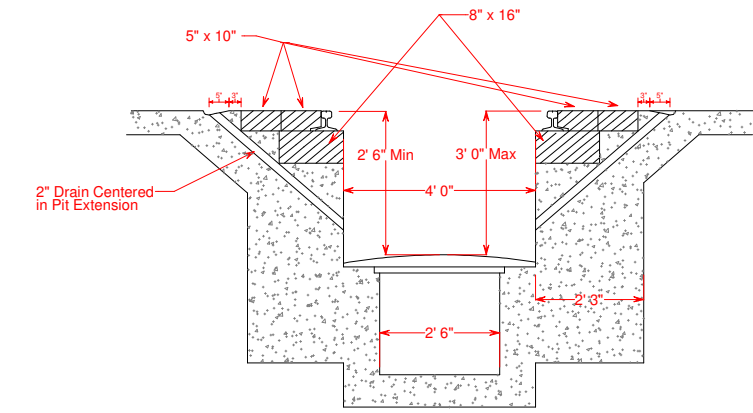
Scale: 1/4" = 1 Ft.

DRAWN BY:

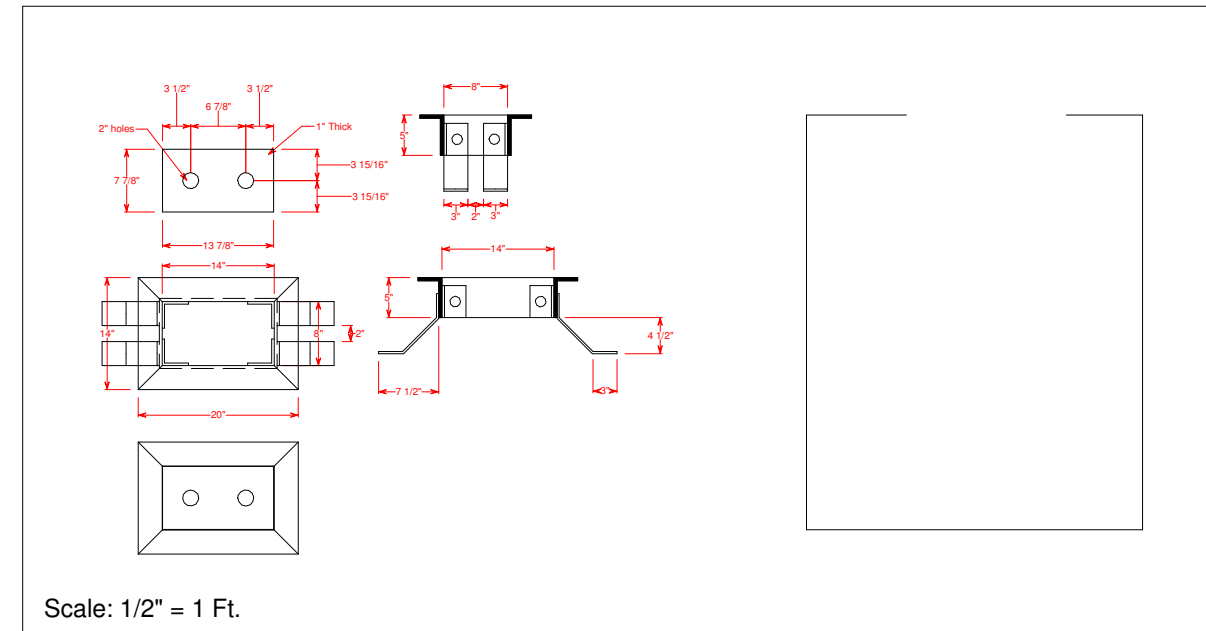
9 / 2007

CIRCA 1930

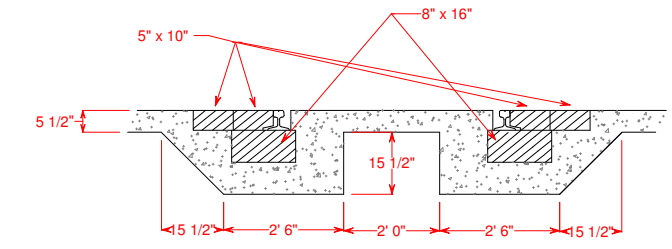
WILLIAM E. SIMONTON III



Section thru Drain at End of Pit

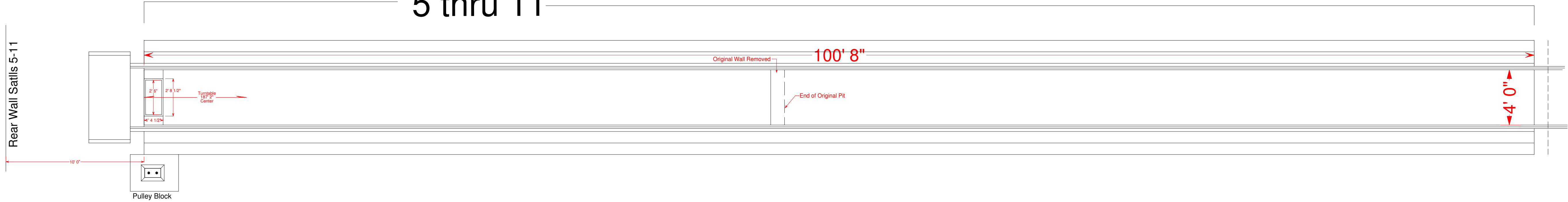


Scale: 1/2" = 1 Ft.

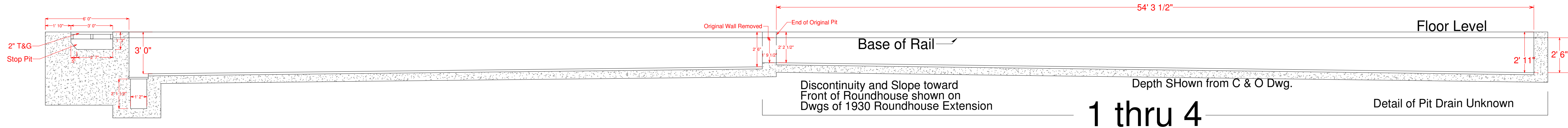


# Stalls 5 Thru 11 (1930)

## 5 thru 11



Note: Drawing which Indicates Depth of Original Pits 1-11 does not State if from Base of Rail or from Floor Level  
Drawing showing Original Pits 12-17 (1916) States Depth from Base of Rail. Therefore drawings reflect both  
Distances and Illustrate depth from Base of Rail



Discontinuity and Slope toward  
Front of Roundhouse shown on  
Dwgs of 1930 Roundhouse Extension

Depth SHown from C & O Dwg.

## 1 thru 4

Detail of Pit Drain Unknown