

THE CHESAPEAKE & OHIO RAILWAY COMPANY

QN CABIN  
COMBINATION OFFICE & CABIN  
AT QUINNIMONT, WEST VIRGINIA

FAYETTE COUNTY - - - WEST VIRGINIA

NEW RIVER SUBDIVISION

SCALE: 1/4" = 1 FOOT  
CIRCA 1975

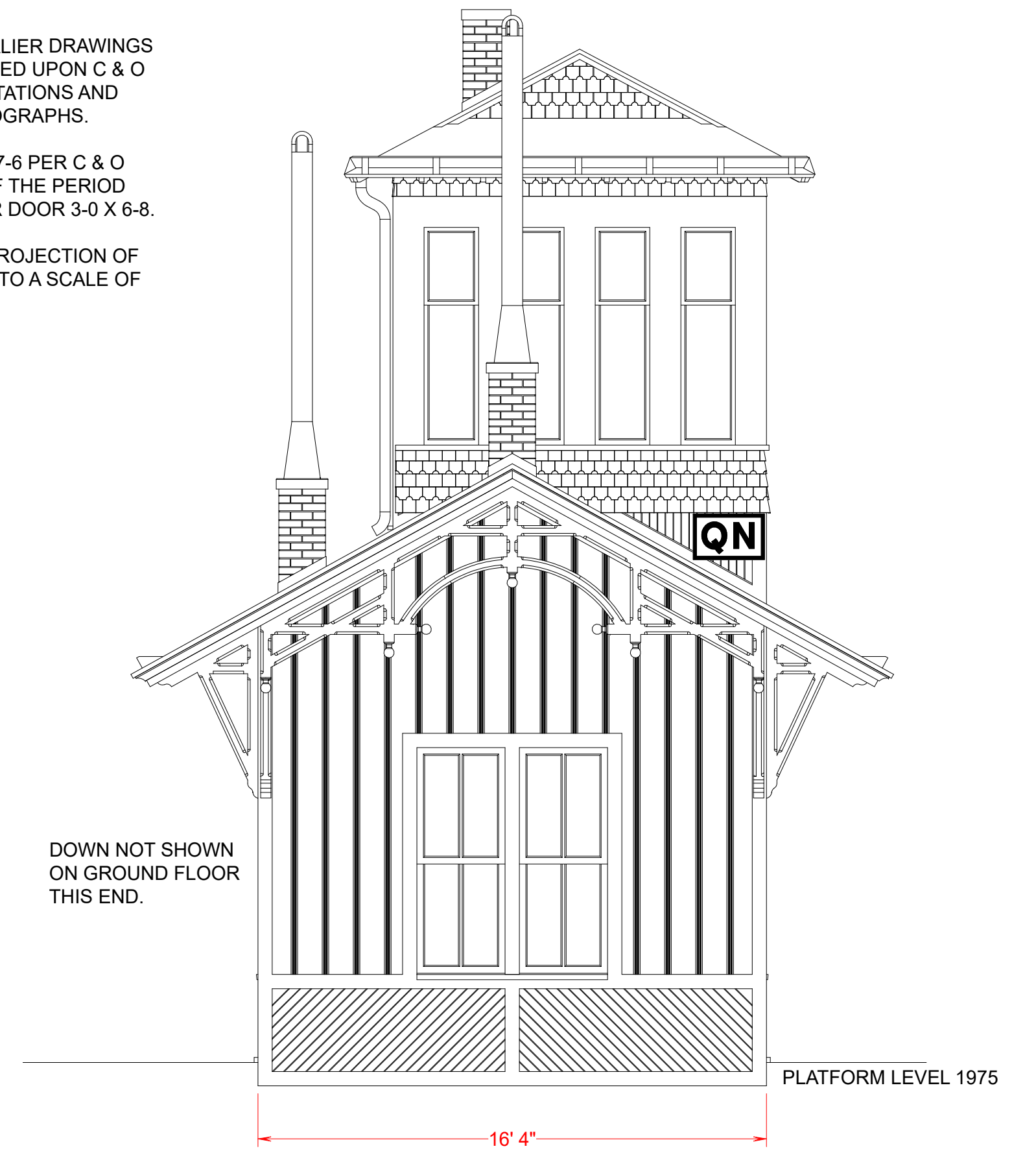
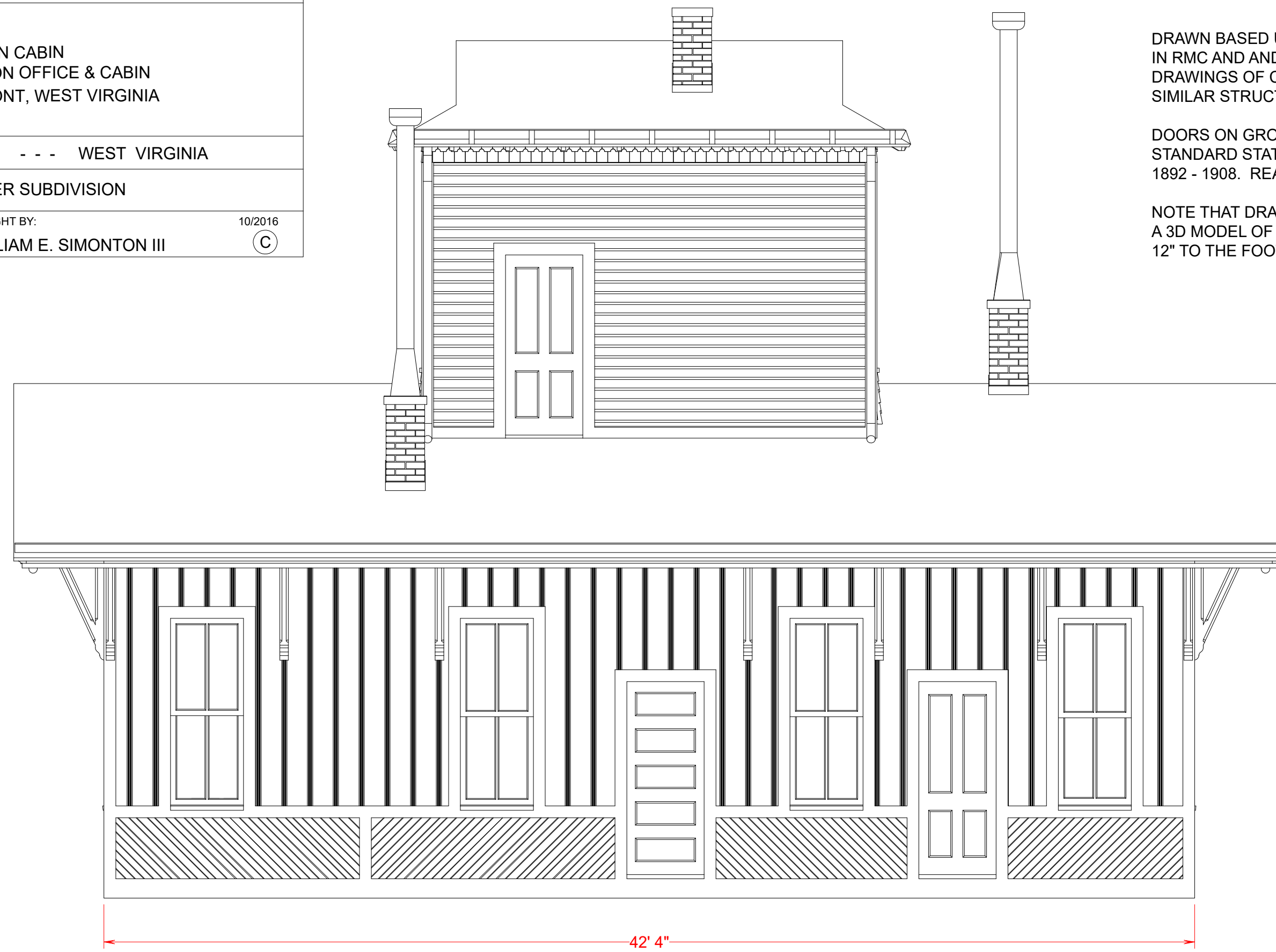
COPYRIGHT BY:  
WILLIAM E. SIMONTON III

10/2016  
©

DRAWN BASED UPON JULIAN CAVALIER DRAWINGS  
IN RMC AND AND CORRECTED BASED UPON C & O  
DRAWINGS OF C & O STANDARD STATIONS AND  
SIMILAR STRUCTURES AND PHOTOGRAPHS.

DOORS ON GROUND FLOOR 3-0 X 7-6 PER C & O  
STANDARD STATION DRAWINGS OF THE PERIOD  
1892 - 1908. REAR SECOND FLOOR DOOR 3-0 X 6-8.

NOTE THAT DRAWINGS ARE A 2D PROJECTION OF  
A 3D MODEL OF QN CABIN DRAWN TO A SCALE OF  
12" TO THE FOOT BY AUTHOR.



Copyright William E. Simonton III 2016  
Commercial Use Prohibited  
Personal Use Permitted

