

THE CHESAPEAKE AND OHIO RAILWAY COMPANY

MOTOR CAR HOUSE NUMBER 1  
STRUCTURE NO. 29  
AT  
HINTON

SUMMERS COUNTY WEST VIRGINIA

HINTON DIVISION --- NEW RIVER SUB-DIV.

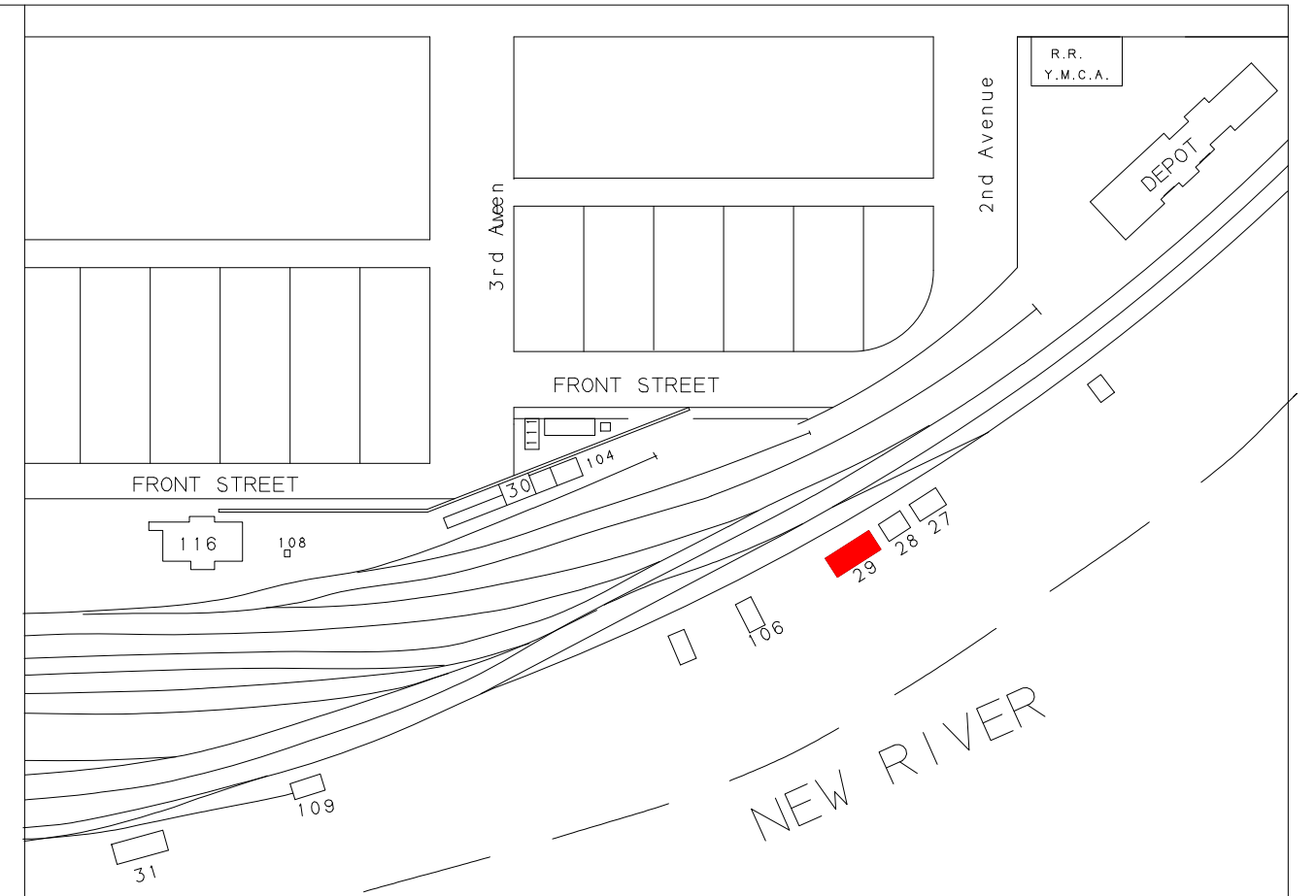
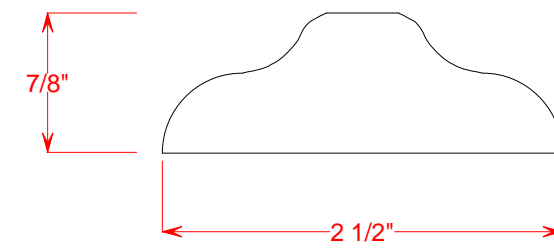
SCALE: 1/4" = 1' DRAWN BY 3/87  
CIRCA 1946 WILLIAM E. SIMONTON III

Copies of these drawings may be made for noncommercial use only

**NO ACCIDENTS  
THIS YEAR**

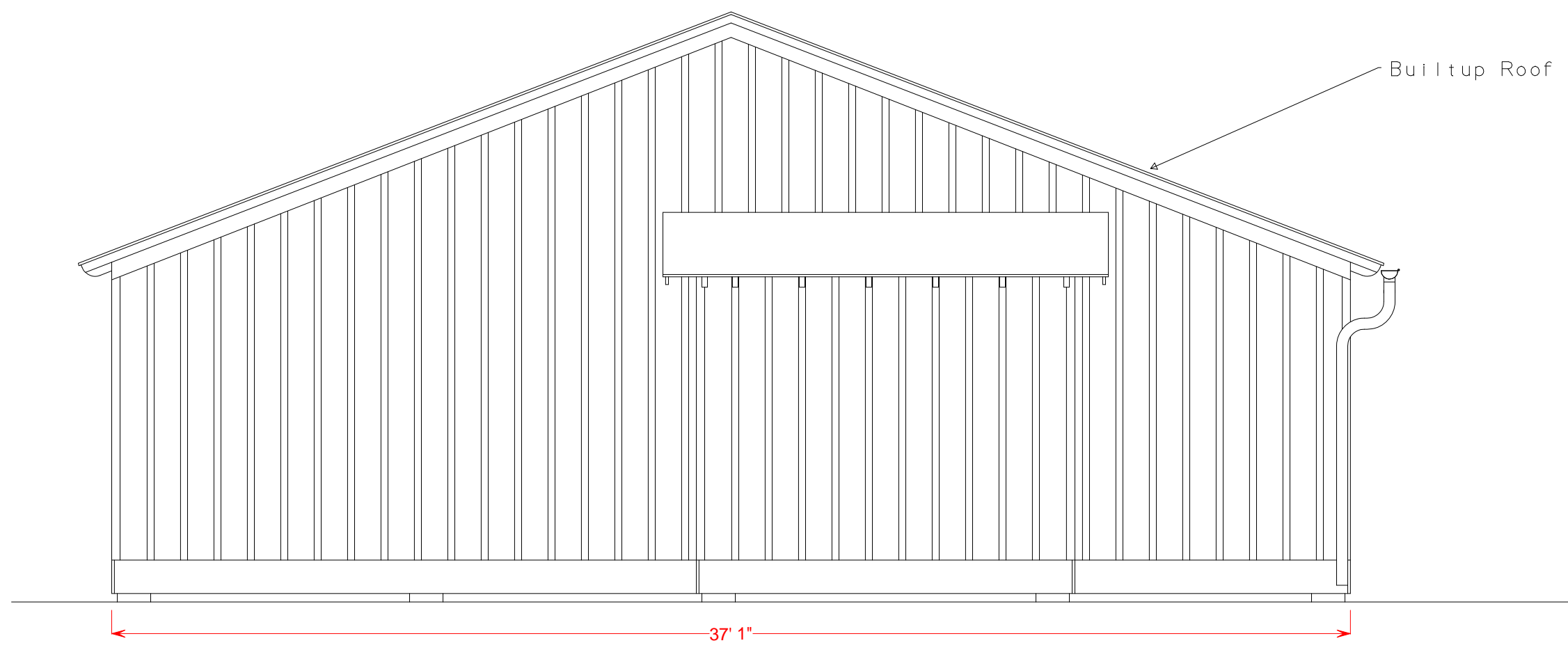
White Lettering on Black  
with White Edge Trim

# BATTEN DETAIL (Cross Section)

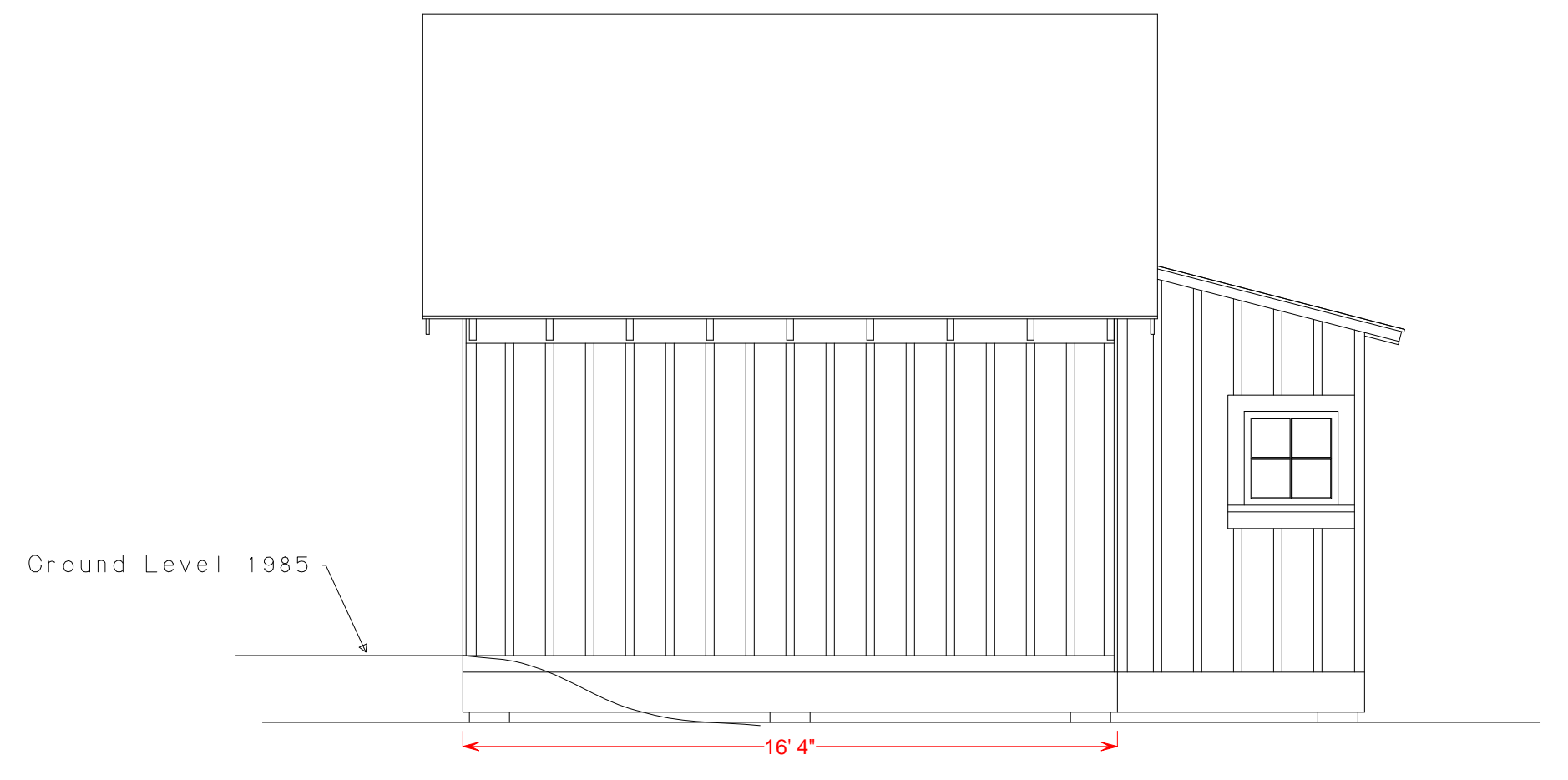


**GASOLINE  
KEEP FIRE  
AND  
LIGHTS AWAY**

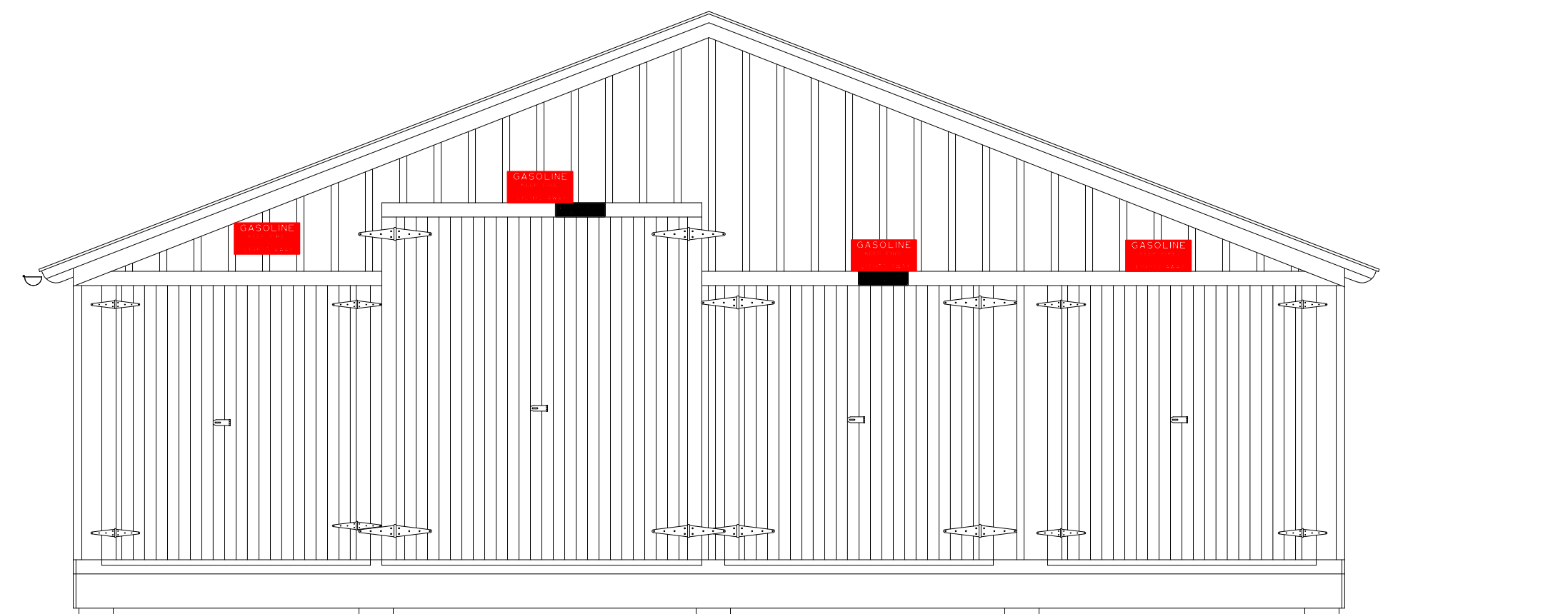
White Lettering on Red  
Sign is 12' X 24'  
White Border on One Sign



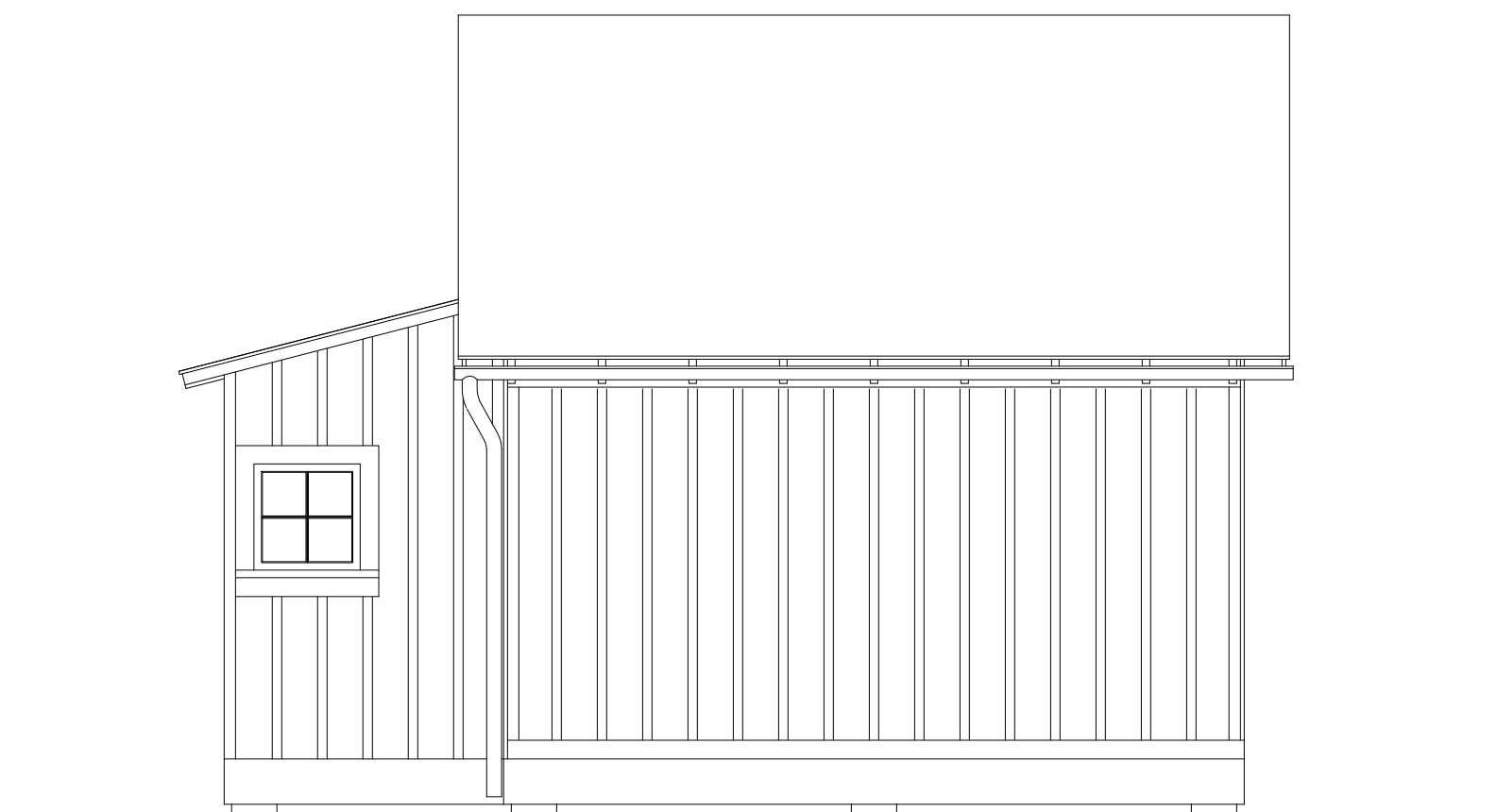
SOUTH ELEVATION



WEST ELEVATION



NORTH ELEVATION



EAST ELEVATION

Structure Built Prior to 1930  
Structure Razed Late 1985

The Eval Map Indicates That This Structure  
Is 13' From The Centerline of the E.B. Main  
Normal Minimum Distance Is 14'

