

THE CHESAPEAKE AND OHIO RAILWAY COMPANY

MALLET ENGINE HOUSE ELEVATIONS  
AT  
HINTON

SUMMERS COUNTY WEST VIRGINIA

HINTON DIVISION --- NEW RIVER SUB-DIV.

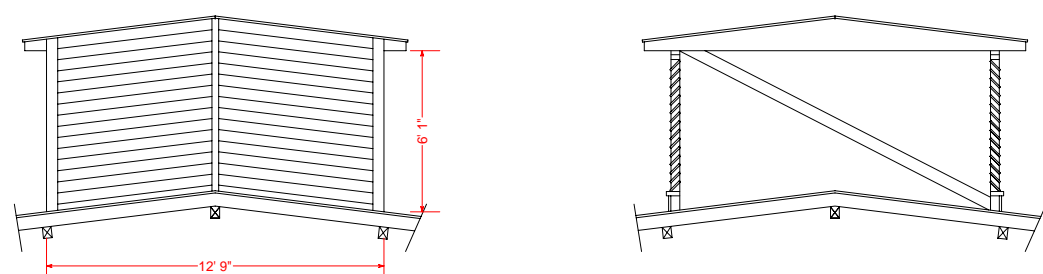
SCALE: 1 / 87.1 HO DRAWN BY: 2 / 2012

CIRCA 1911 - 1942 WILLIAM E. SIMONTON III

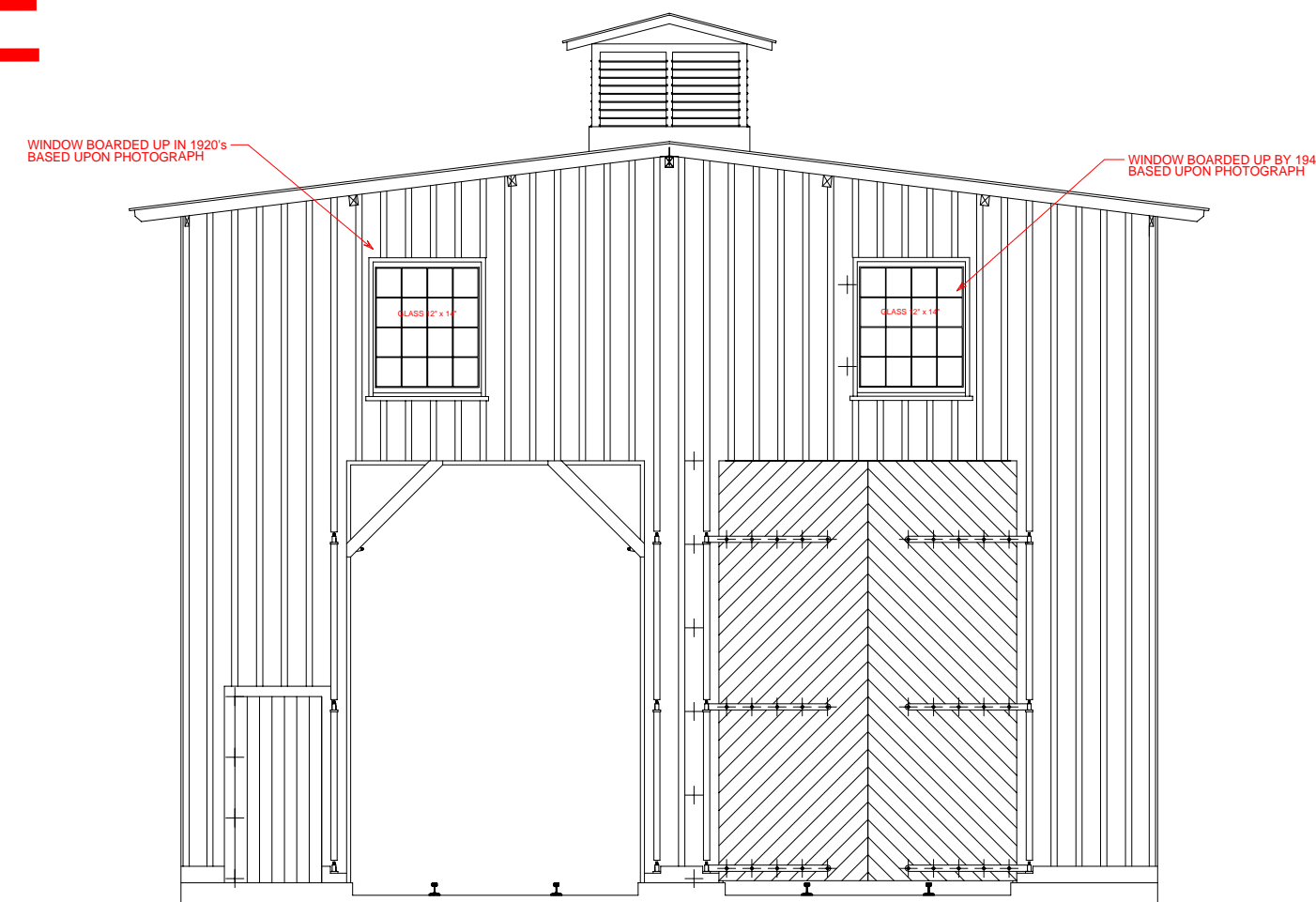
APPEARANCE OF MONITOR IN 1920s UNTIL 1942 WHEN SMOKE JACKS REPLACED MONITOR. DRAWING IS SCALED FROM PHOTOGRAPHS AND BASED UPON THOSE MEASUREMENTS APPEARS TO MIRROR THE CONSTRUCTION OF ROUNDHOUSE MONITOR ON WHICH THIS DRAWINGS BASED. NUMBER AND LENGTH OF LOUVER PANELS UNKNOWN AND LENGTH IS ESTIMATED BASED ON PHOTOGRAPH AND LENGTH OF ORIGINAL LOUVERS BELOW. ALSO SEE PHOTO ON PAGE 35 OF THE CHESAPEAKE & OHIO RAILWAY IN HINTON PUBLISHED BY THE COHS.

# MALLET ENGINE HOUSE 1911-1942

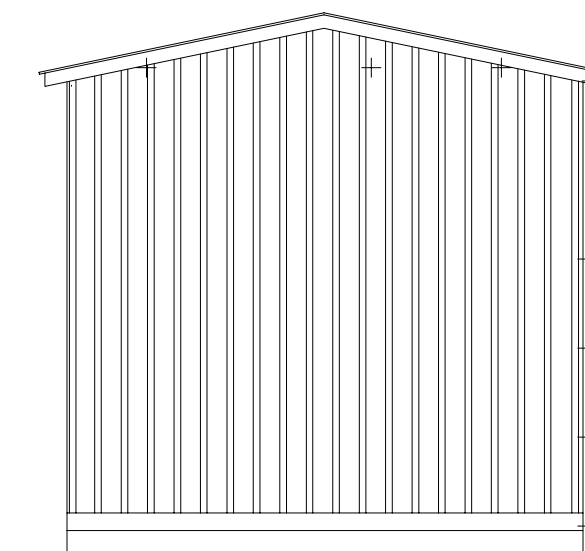
PITS & CONCRETE FLOOR ADDED CIRCA 1937



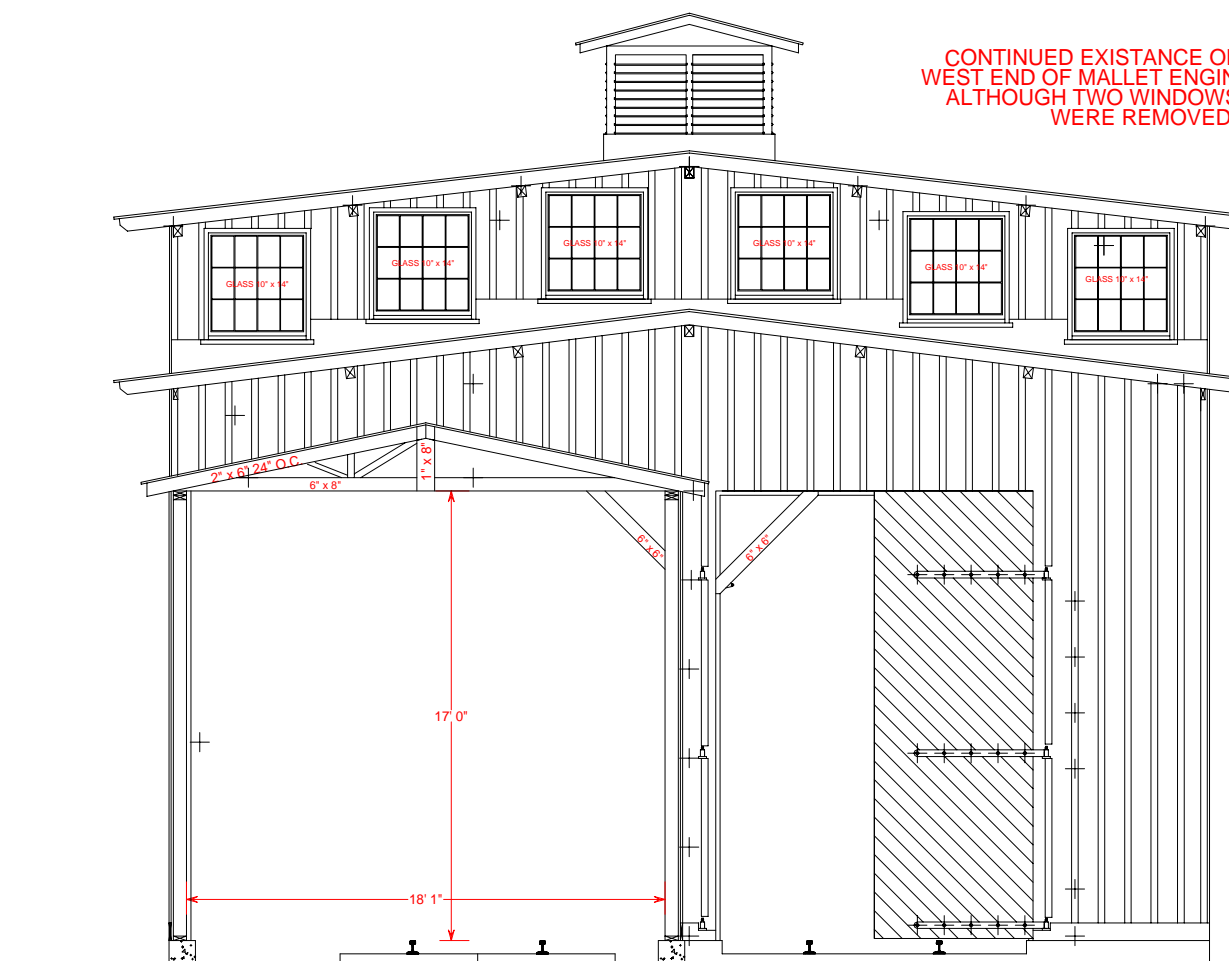
THE WIDTH OF THE MONITOR IS CLEAR FROM THE LOCATION OF THE PURLONS. THE HEIGHT IS TAKEN FROM THE ROUNDHOUSE MONITOR AND SCALING A PHOTOGRAPH DOES NOT APPEAR TO SIGNIFICANTLY CHANGE THE HEIGHT AS DEPICTED. 5' SIDING DEPICTED BASED ON OLDEST EXTANT EXAMPLE I FOUND AT HINTON - THE ICE HOUSE.



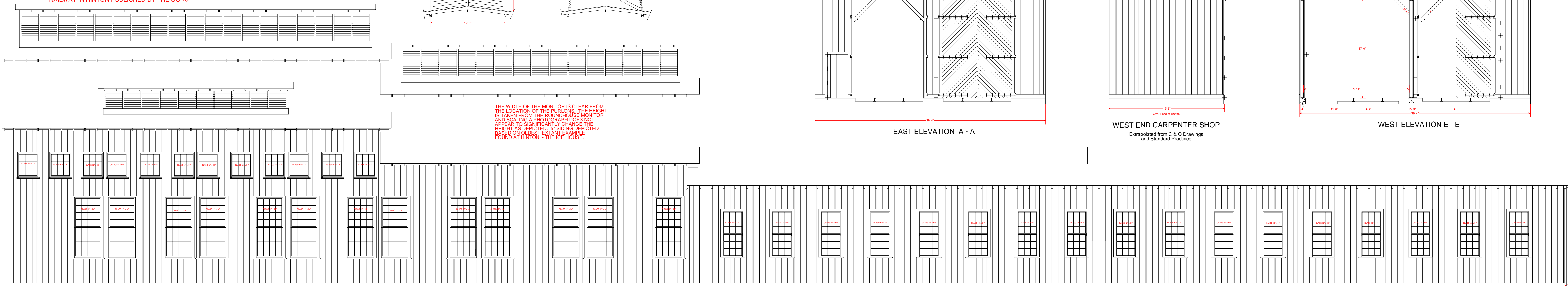
EAST ELEVATION A - A



WEST END CARPENTER SHOP  
Extrapolated from C & O Drawings and Standard Practices

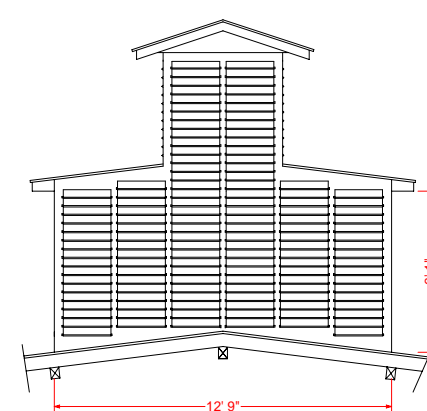
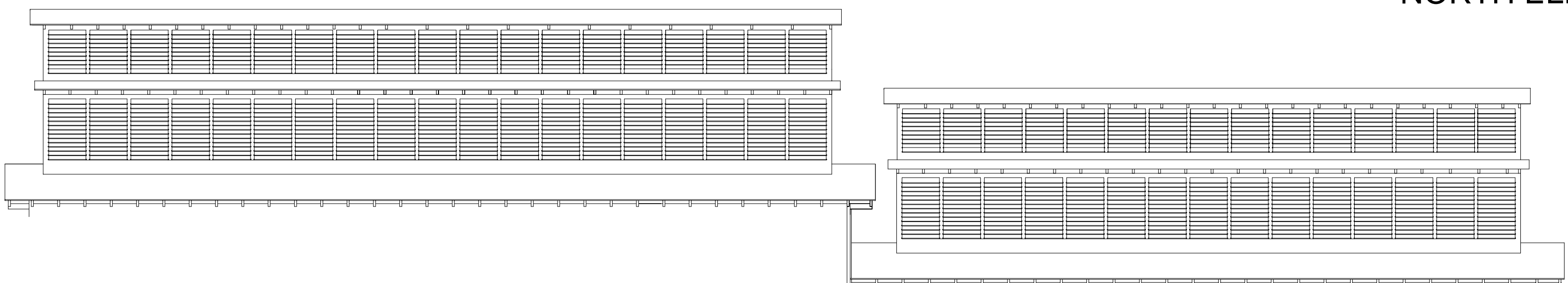


WEST ELEVATION E - E

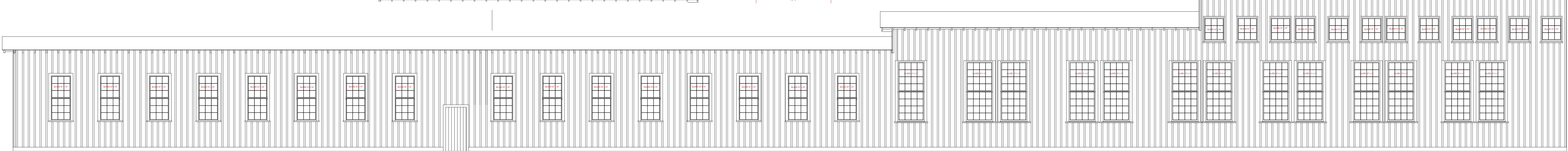


NORTH ELEVATION MALLET ENGINE HOUSE

CARPENTER SHOP



APPEARANCE OF MONITOR CIRCA 1916  
SEE NOTES ABOVE & COHS PHOTO 22701



SOUTH ELEVATION MALLET ENGINE HOUSE

CARPENTER SHOP