

THE CHESAPEAKE & OHIO RAILWAY COMPANY

COALDOCK  
FOR  
M1 STEAM TURBINE LOCOMOTIVE  
AT HINTON

SUMMERS COUNTY - - - WEST VIRGINIA

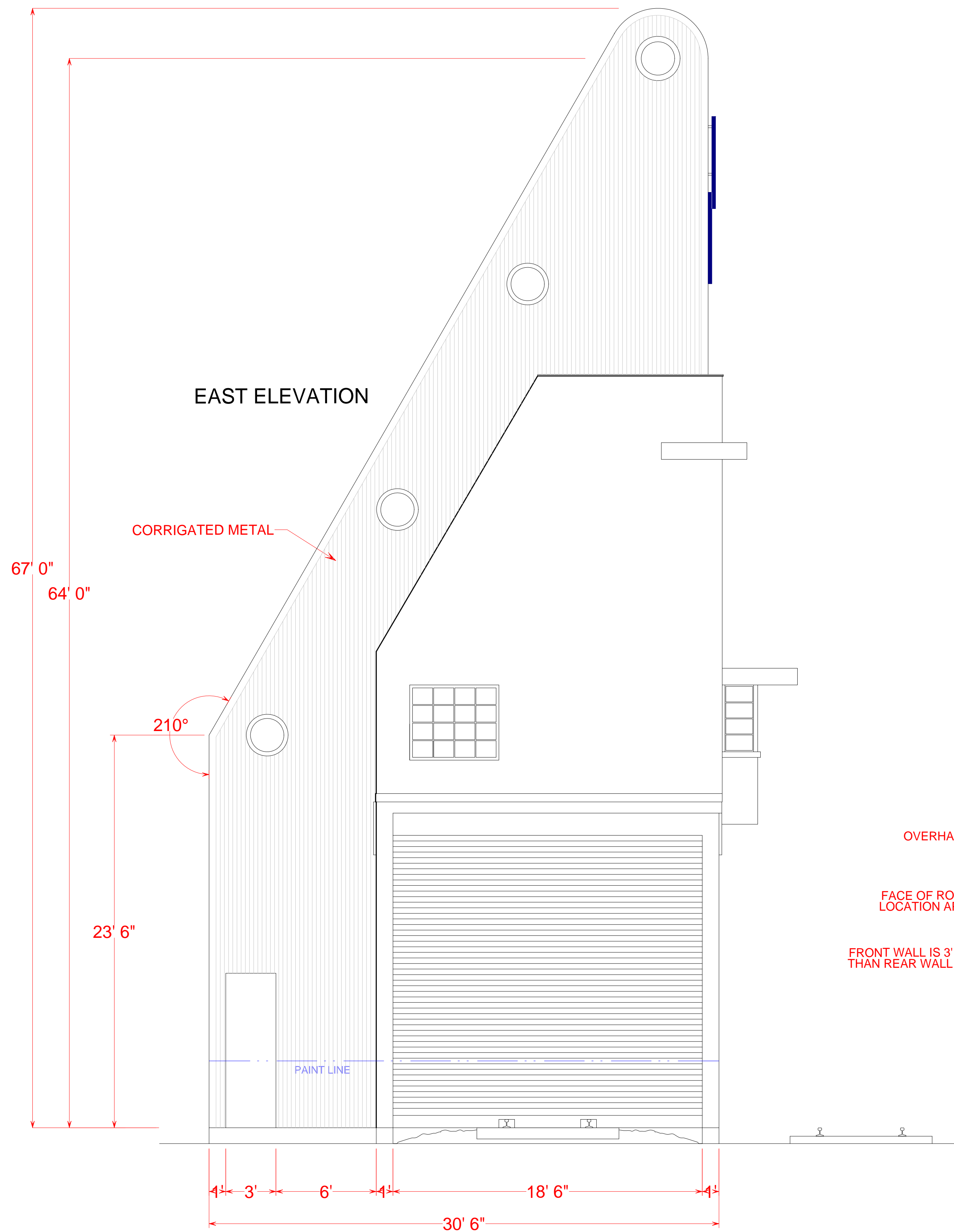
HINTON DIVISION - - - NEW RIVER SUBDIVISION

SCALE: 1/4" = 1 FOOT  
CIRCA 1950

COPYRIGHT BY: 2/12  
WILLIAM E. SIMONTON III

THESE DRAWINGS ARE BASED UPON THOSE DEVELOPED BY RUSS HASS AND HAVE BEEN MODIFIED TO REFLECT THE AUTHOR'S REVIEW OF AVAILABLE PHOTOGRAPHS AND SHOULD ONLY BE CONSIDERED REPRESENTATIVE OF THE COALDOCK AS BUILT. PLAN DIMENSIONS BASED UPON A DRAWING OF THE FOUNDATIONS OF THE HINTON COALDOCK IN THE FILES OF THE CHESAPEAKE AND OHIO HISTORICAL SOCIETY, INC. AND FIELD MEASUREMENTS MADE BY GARY BURDETTE, ET AL. ALL VERTICAL DIMENSIONS DERIVED FROM ESSENTIALLY UNDIMENSIONED DRAWINGS AND PHOTOGRAPHS.

REFER TO RUSS HASS'S DRAWINGS AT:  
<http://www.cohs.org/repository/Samples/M1%20COAL%20DOCK-BINDER.pdf>



NORTH ELEVATION

