

THE CHESAPEAKE AND OHIO RAILWAY COMPANY

LINEMANS TOOL HOUSE  
STRUCTURE NO. 106  
AT  
HINTON

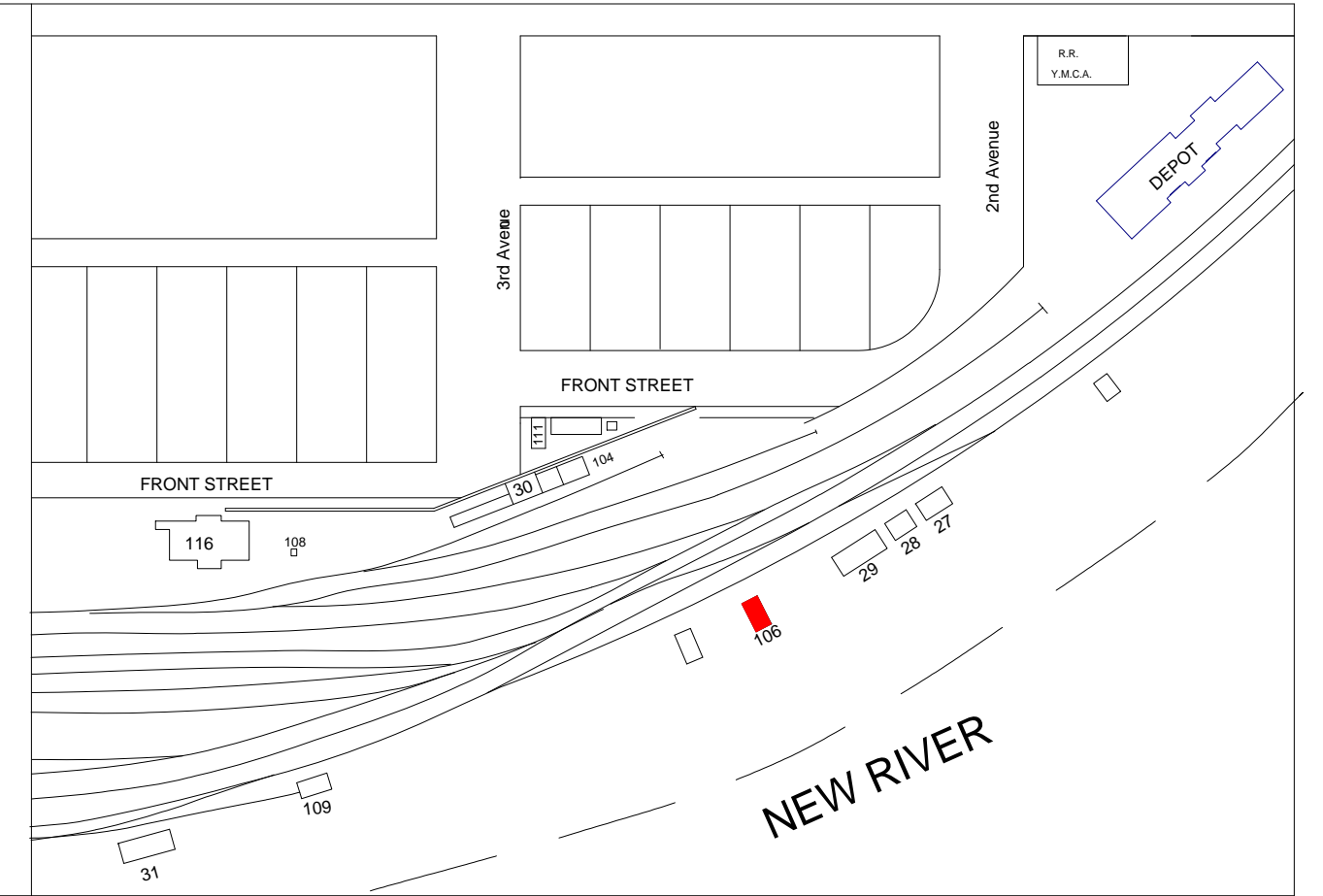
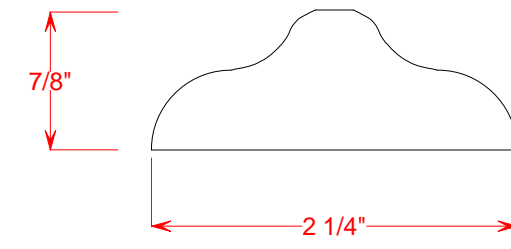
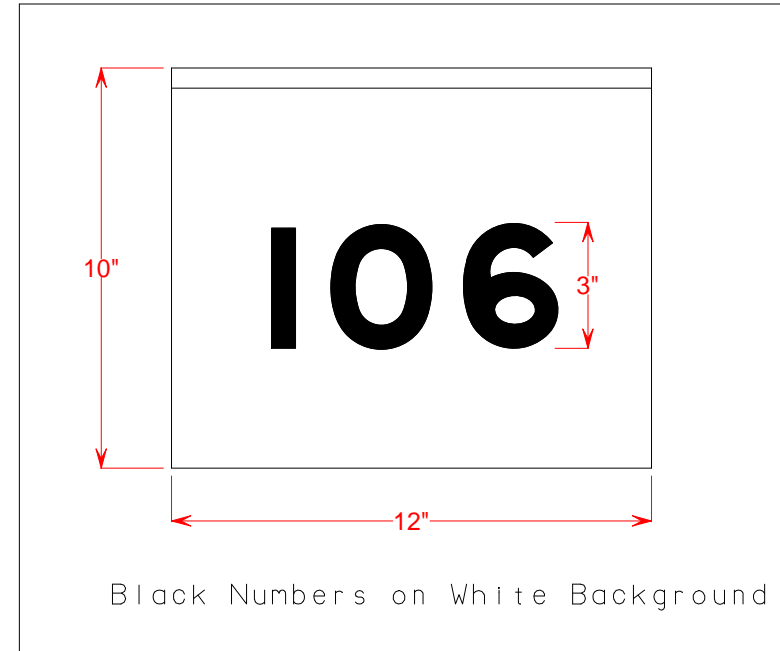
SUMMERS COUNTY WEST VIRGINIA

HINTON DIVISION --- NEW RIVER SUB-DIV.

SCALE: 1/4" = 1' DRAWN BY 5/87  
CIRCA 1946 WILLIAM E. SIMONTON III

Copies of these drawings may be made for noncommercial use only

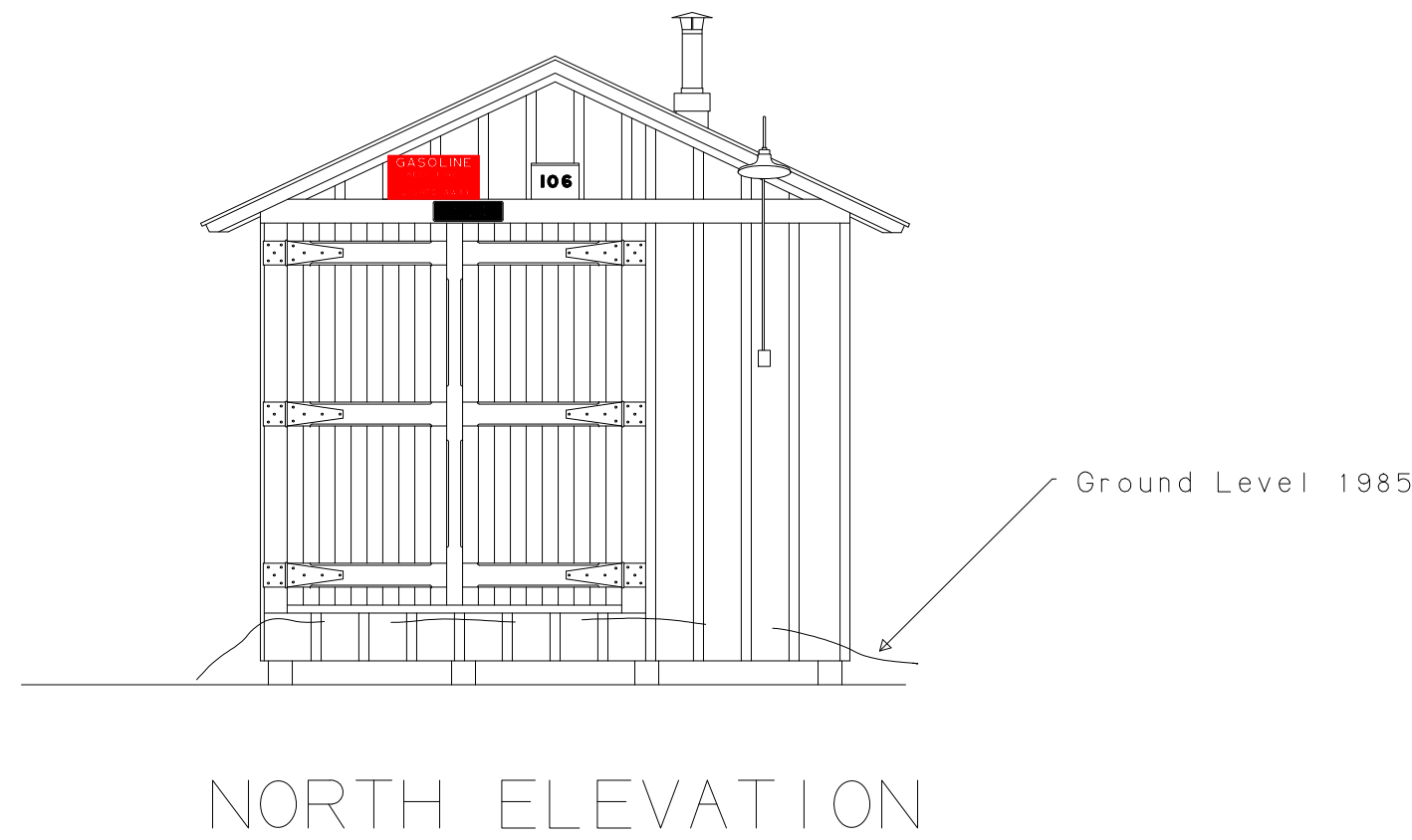
# BATTEN DETAIL (Cross Section)



White Letters on Red



White Lettering on Black



Structure Built January 1940  
Structure Razed Late 1985

