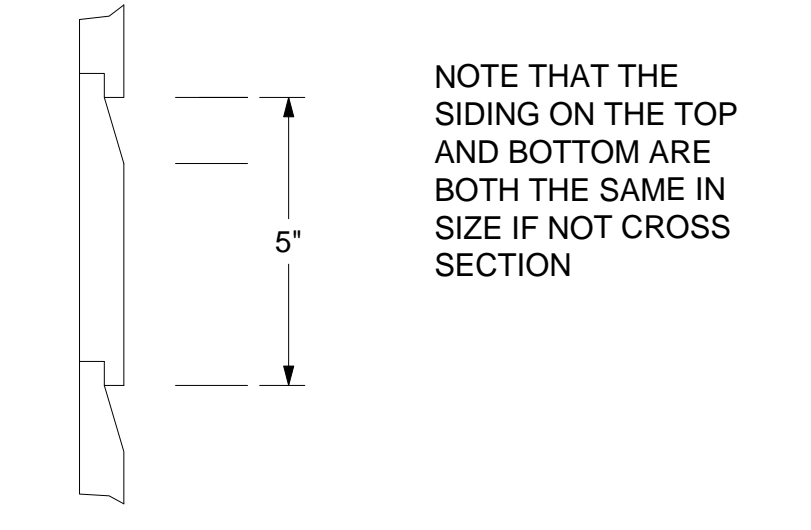
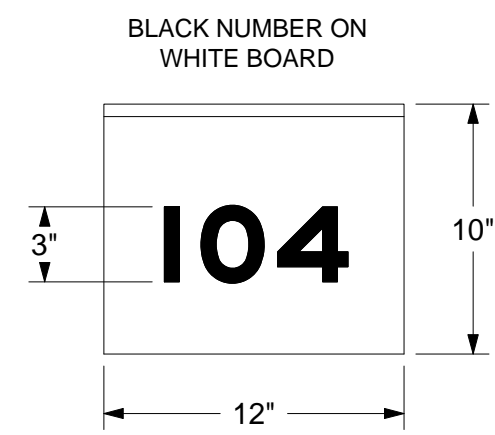
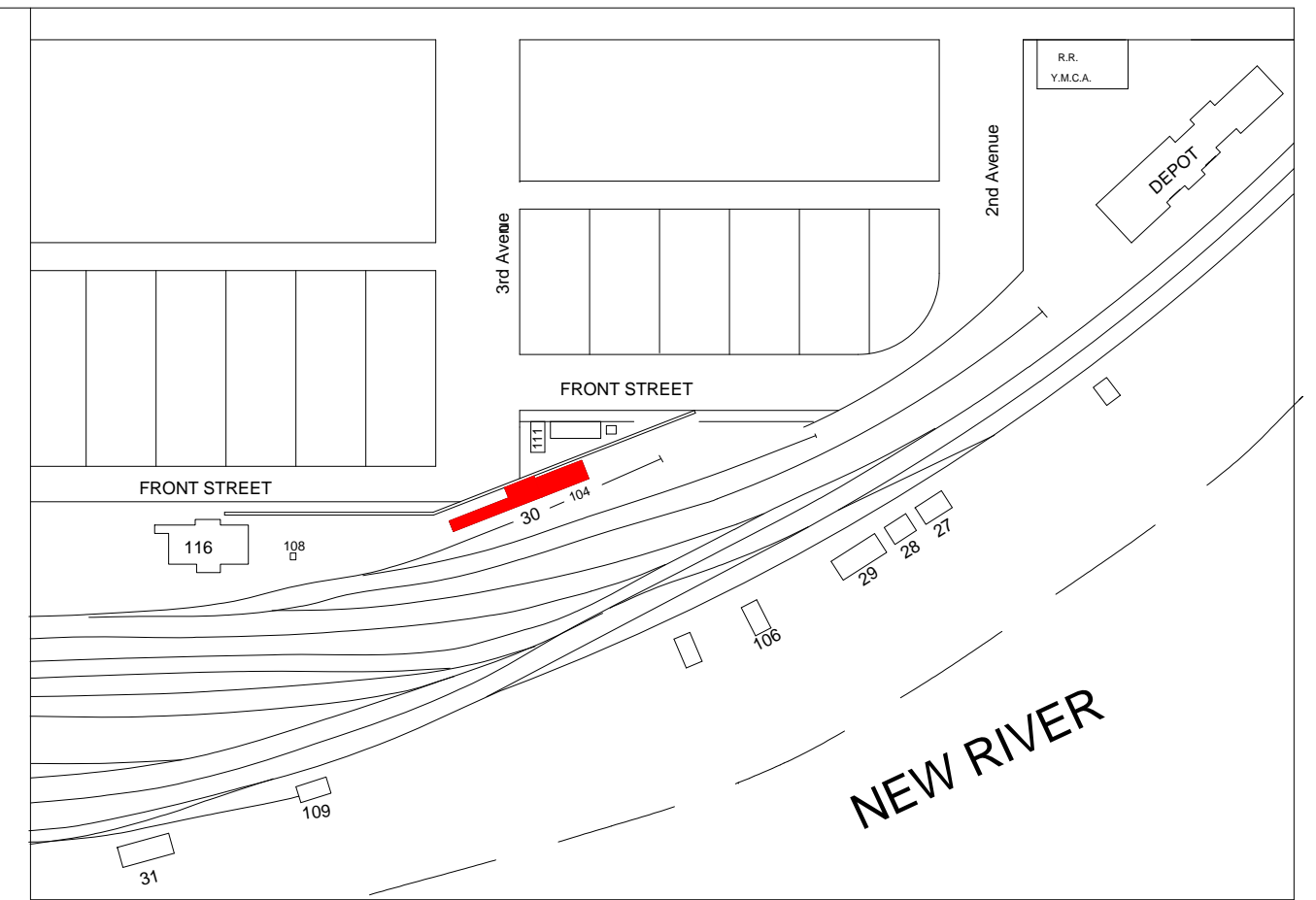


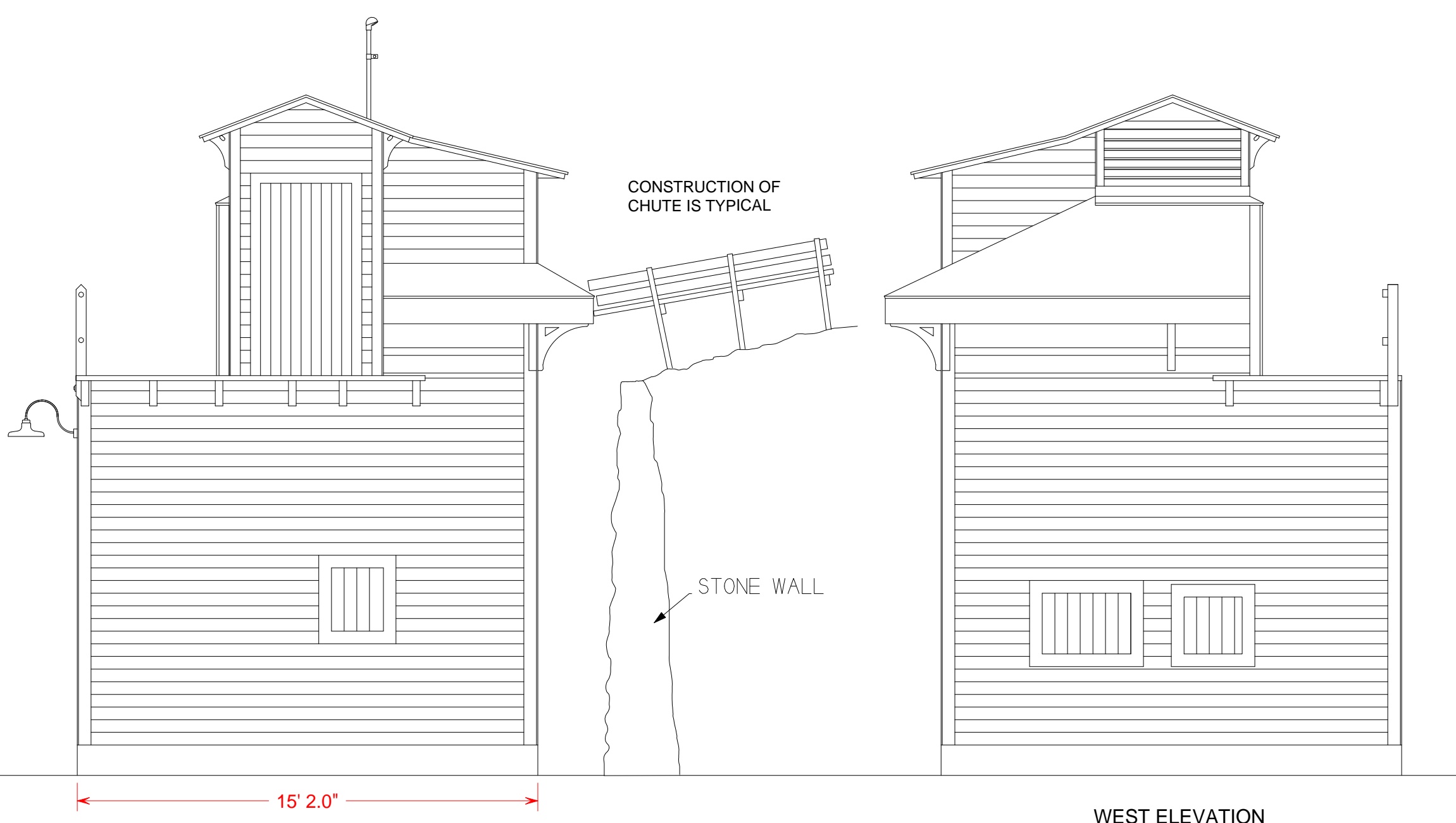
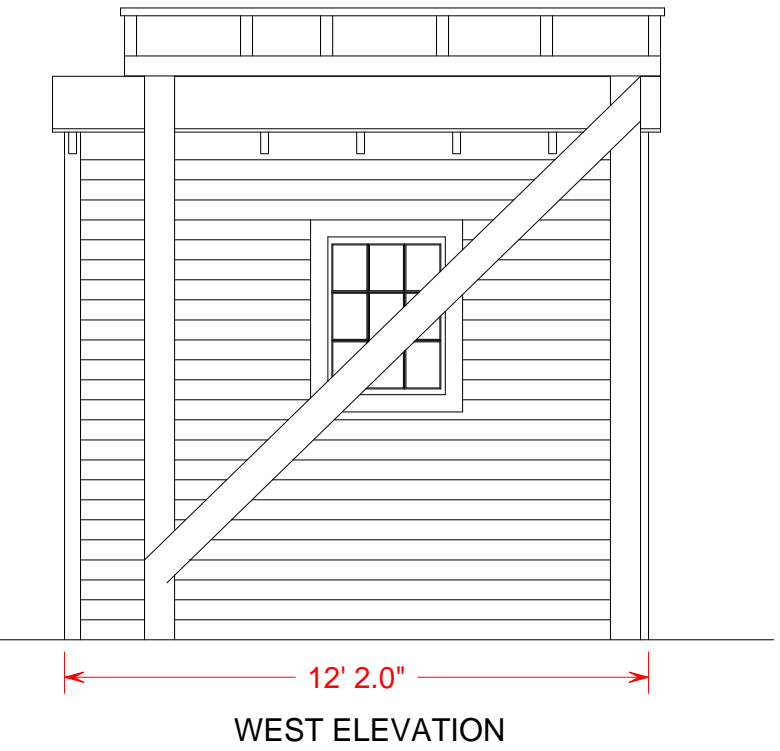
THE CHESAPEAKE & OHIO RAILWAY COMPANY
 ICE HOUSE AND ICING PLATFORM
 STRUCTURE NO. 30
 AND
 AIR CONDITIONING SUPPLY HOUSE
 STRUCTURE NO. 104
 AT HINTON
 SUMMERS COUNTY - - - WEST VIRGINIA
 HINTON DIVISION - - - NEW RIVER SUBDIVISION
 SCALE: 1/4" = 1 FOOT
 CIRCA 1946
 COPYRIGHT BY:
 WILLIAM E. SIMONTON III
 4/93



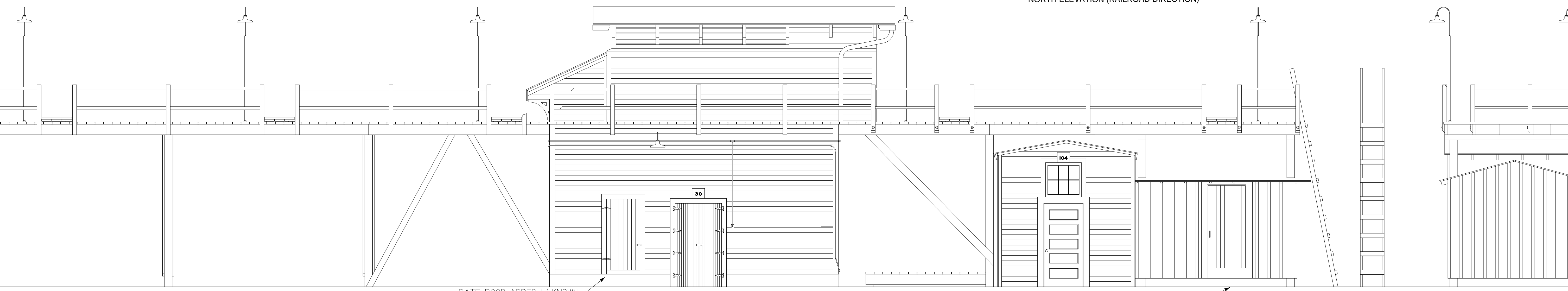
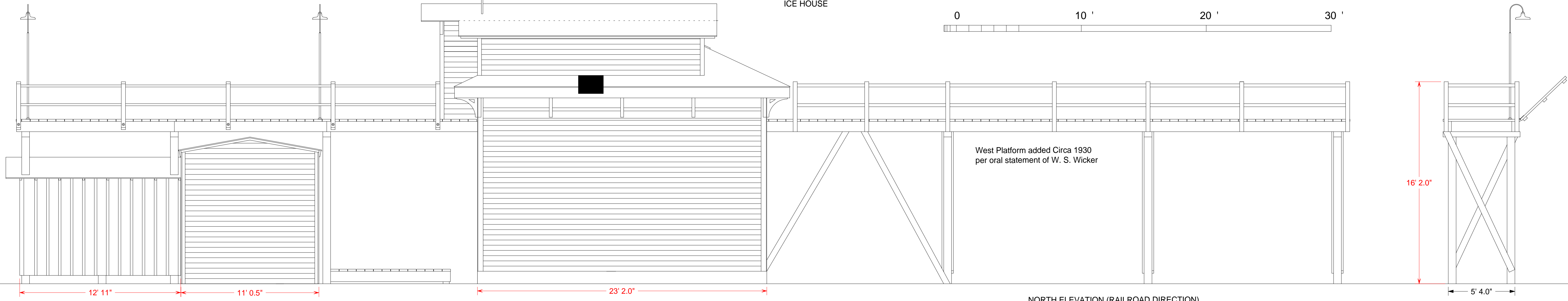
TYPICAL CROSS SECTION OF SIDING ON ICE HOUSE AND AIR CONDITIONING SUPPLY HOUSE WITH DIMENSIONS INDICATED.



DOORS ON ENDS OF ICE HOUSE RECESSED TO THE INSIDE OF THE 12" THICK WALLS AND OPEN FROM THE INSIDE. THEIR PURPOSE IS NOT KNOWN



Ice House apparently built prior to 1916, and may not have had icing platform as built (See 1916 Evaluation Map). Building 104 was built circa 1935 when the C & O's first air conditioned passenger train the George Washington was placed in service.



DATE DOOR ADDED UNKNOWN

DATE OF ADDITION TO 104 UNKNOWN

SOUTH ELEVATION (RAILROAD DIRECTION)

NORTH ELEVATION (RAILROAD DIRECTION)

EAST ELEVATION