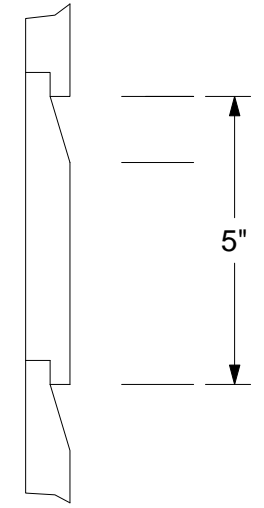
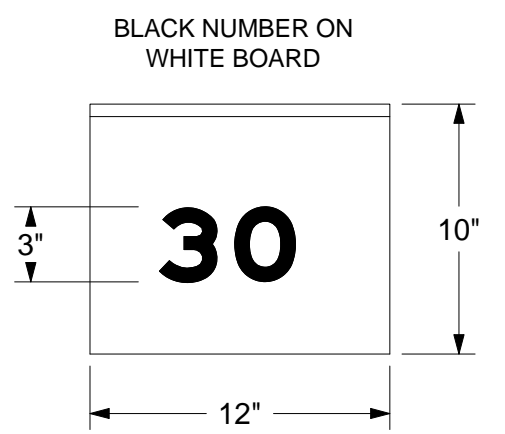


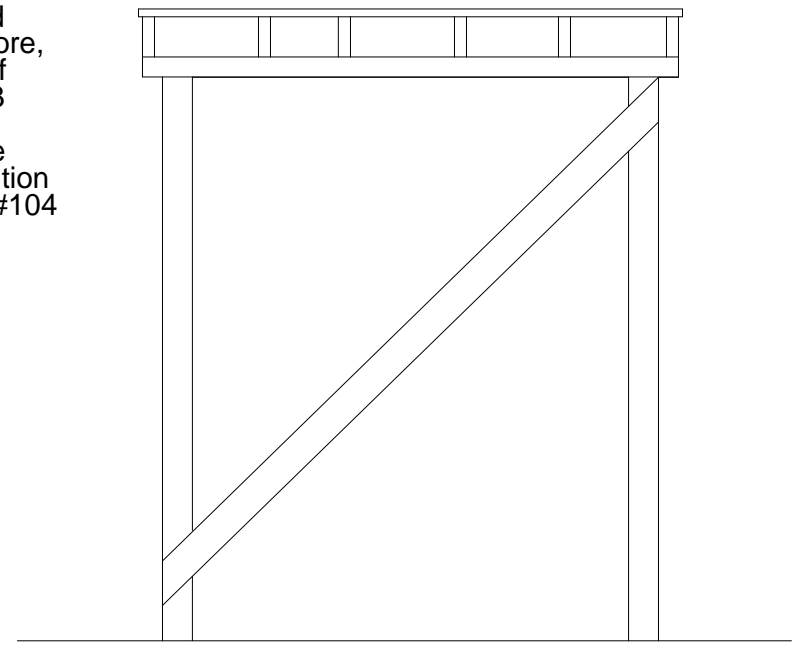
THE CHESAPEAKE & OHIO RAILWAY COMPANY
 ICE HOUSE AND ICING PLATFORM
 STRUCTURE NO. 30
 AND
 AIR CONDITIONING SUPPLY HOUSE
 STRUCTURE NO. 104
 AT HINTON
 SUMMERS COUNTY - - - WEST VIRGINIA
 HINTON DIVISION - - - NEW RIVER SUBDIVISION
 SCALE: 1/4" = 1 FOOT
 CIRCA 1934
 COPYRIGHT BY:
 WILLIAM E. SIMONTON III
 5/2007



NOTE THAT THE
 SIDING ON THE TOP
 AND BOTTOM ARE
 BOTH THE SAME IN
 SIZE IF NOT CROSS
 SECTION

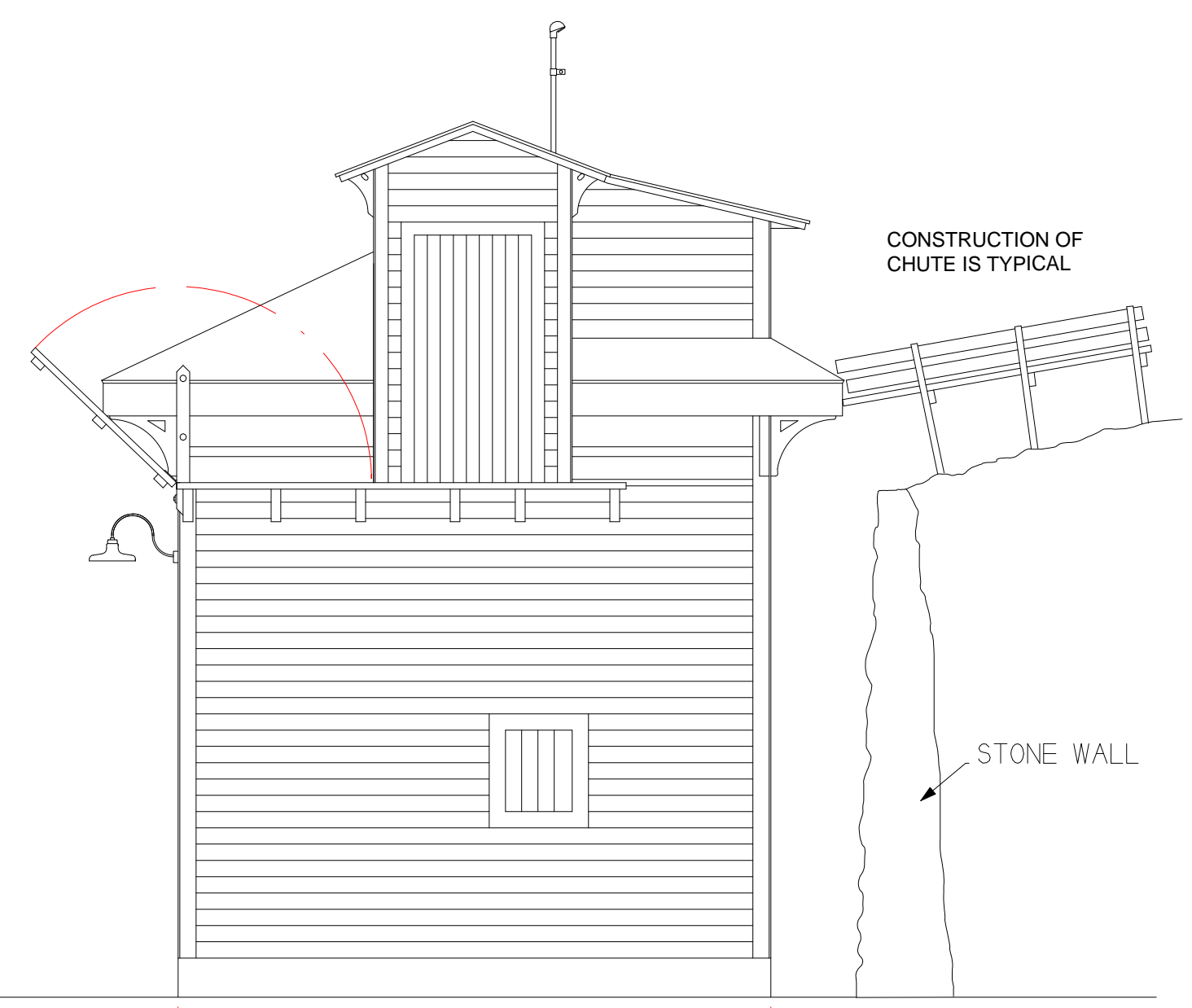
TYPICAL CROSS SECTION OF SIDING ON
 ICE HOUSE AND AIR CONDITIONING SUPPLY
 HOUSE WITH DIMENSIONS INDICATED.

Partial records indicate that a cinder conveyor used to service a steam wreck crane was removed just railroad west of the ice house in 1943. Therefore, it is very probable that the western half of the icing platform was added in 1943 or after. This drawing represents the author's best estimate of the ice house appearance prior to 1934 and the addition of the Air Conditioning Supply House #104

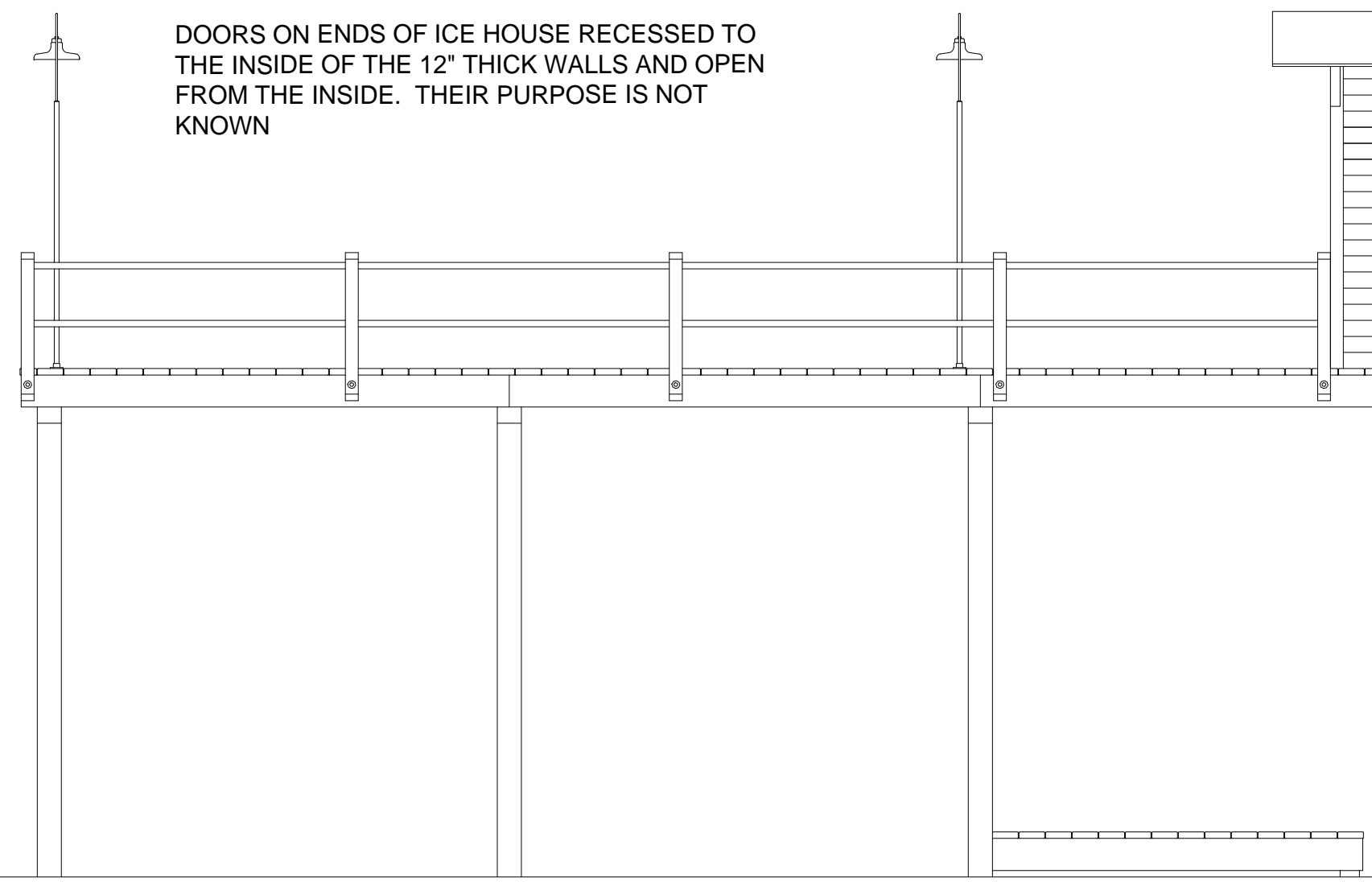


WEST ELEVATION

Ice House apparently built prior to 1916, and may not have had icing platform as built (See 1916 Evaluation Map).

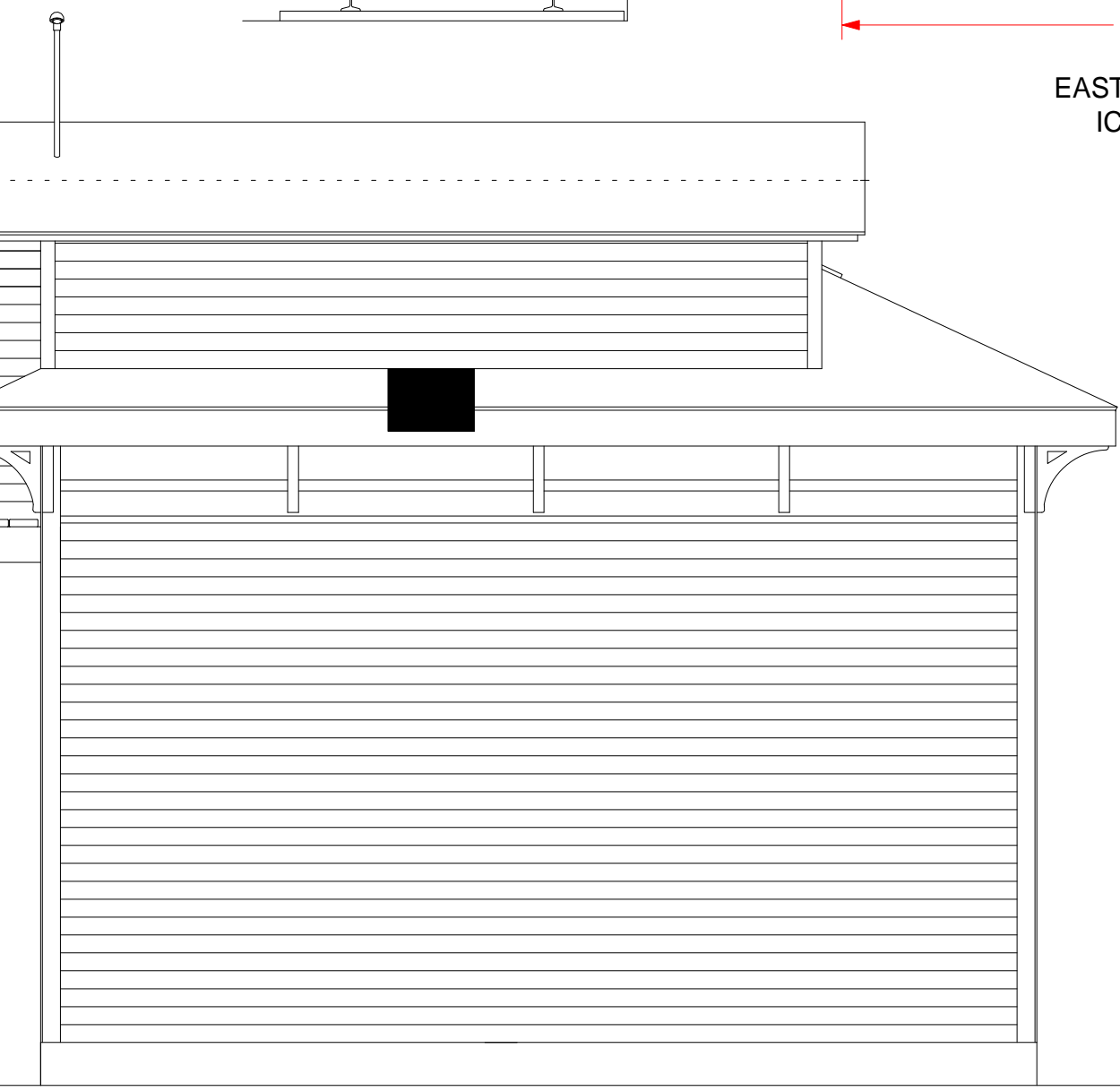


EAST ELEVATION
 ICE HOUSE

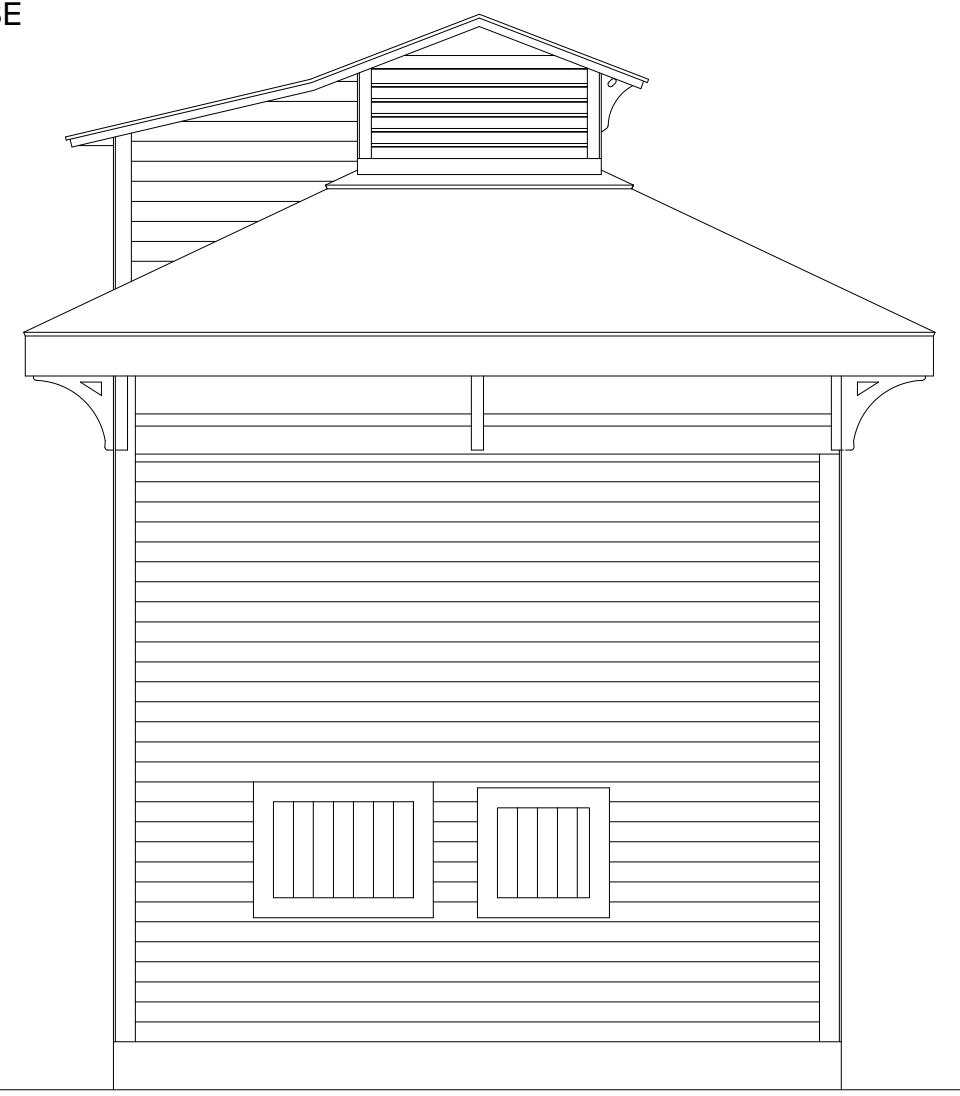


DOORS ON ENDS OF ICE HOUSE RECESSED TO THE INSIDE OF THE 12" THICK WALLS AND OPEN FROM THE INSIDE. THEIR PURPOSE IS NOT KNOWN

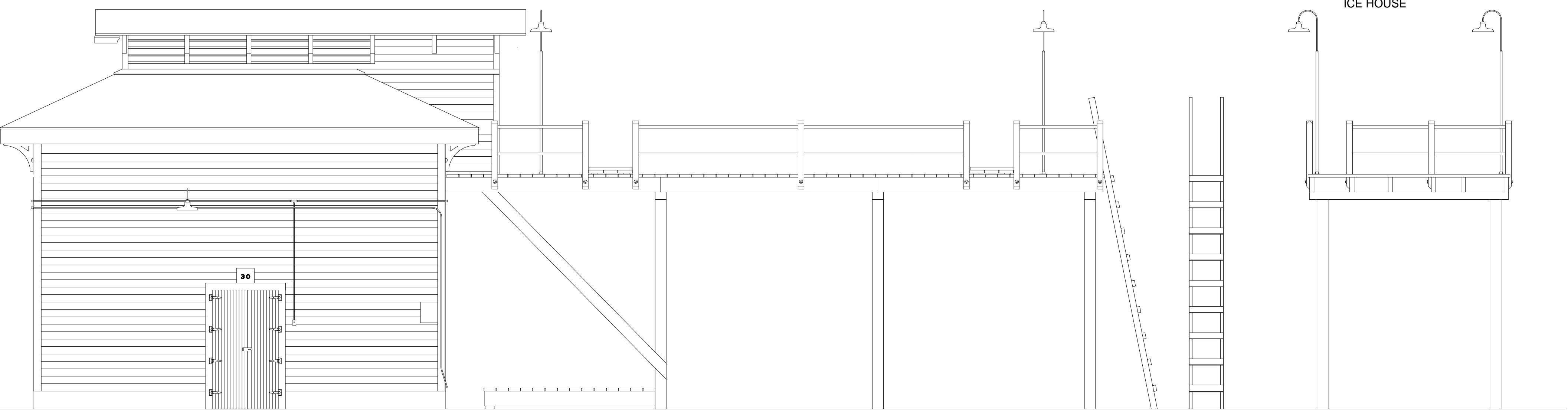
SOUTH ELEVATION (RAILROAD DIRECTION)



EAST ELEVATION
 ICE HOUSE



WEST ELEVATION
 ICE HOUSE



EAST ELEVATION