

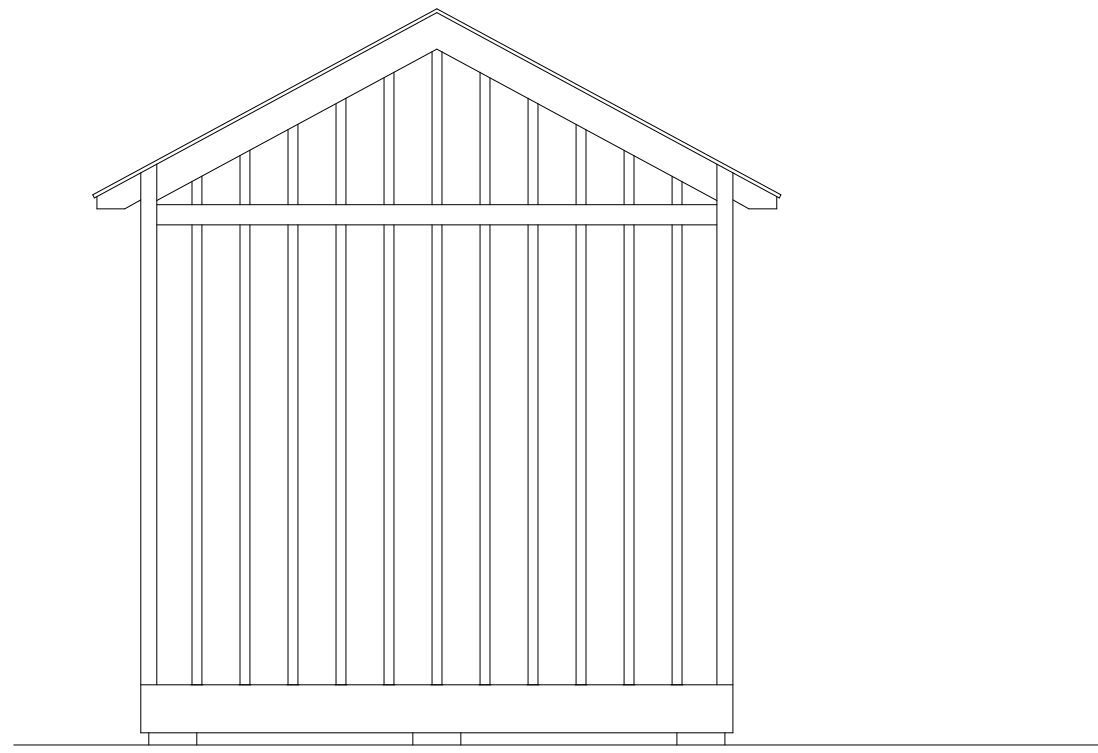
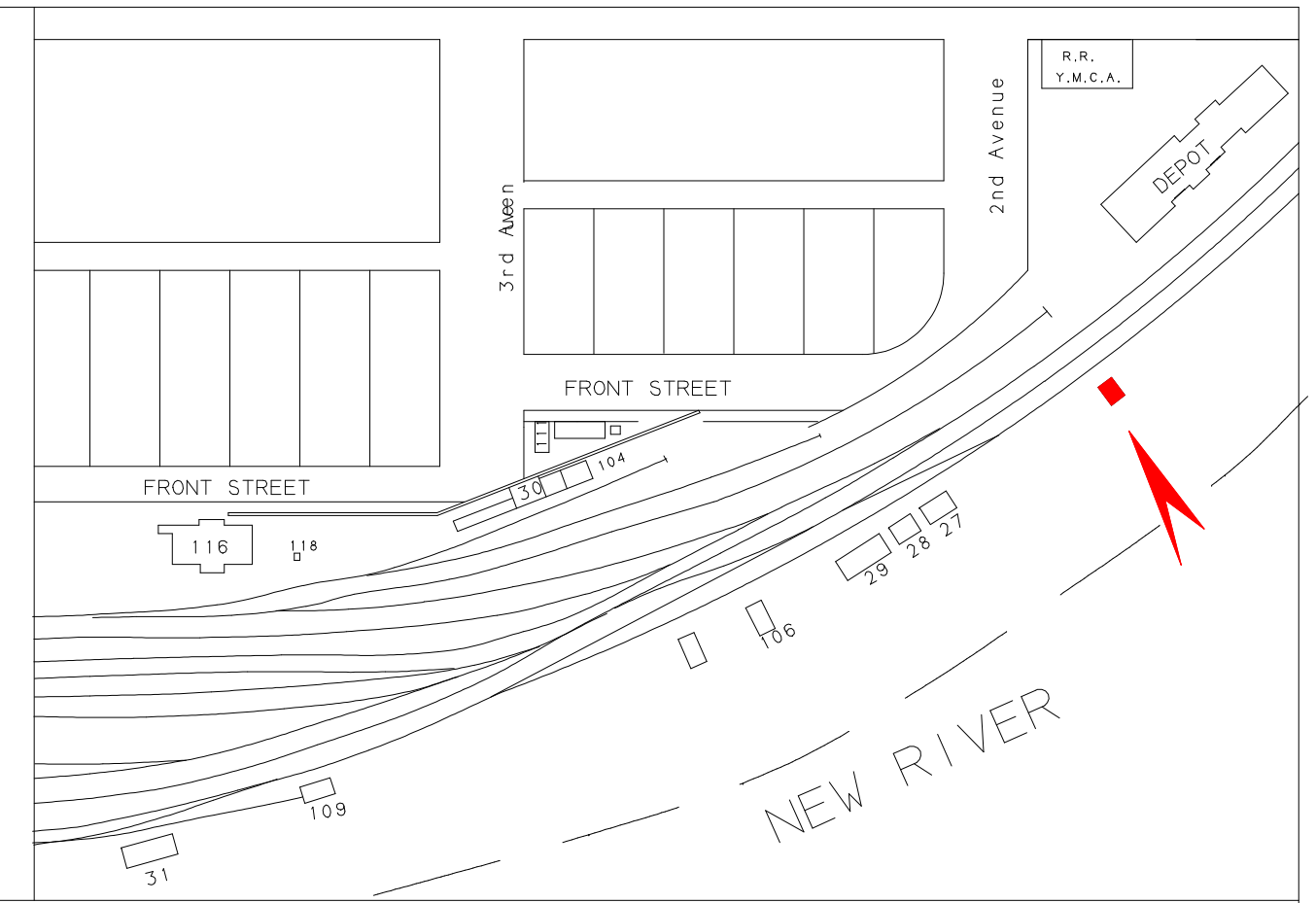
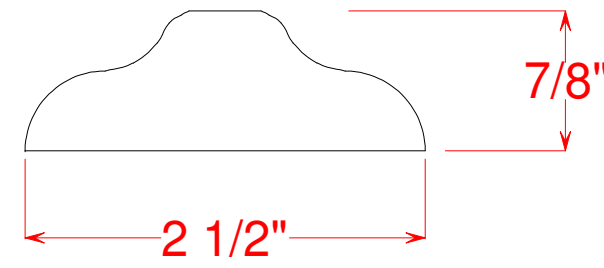
THE CHESAPEAKE AND OHIO RAILWAY COMPANY  
 HOSTLER'S  
 &  
 PASSENGER CAR EQUIPMENT BUILDING  
 AT  
 HINTON

SUMMERS COUNTY WEST VIRGINIA  
 HINTON DIVISION --- NEW RIVER SUB-DIV.  
 SCALE: 1/4" = 1' DRAWN BY 4/87  
 CIRCA 1948 WILLIAM E. SIMONTON III

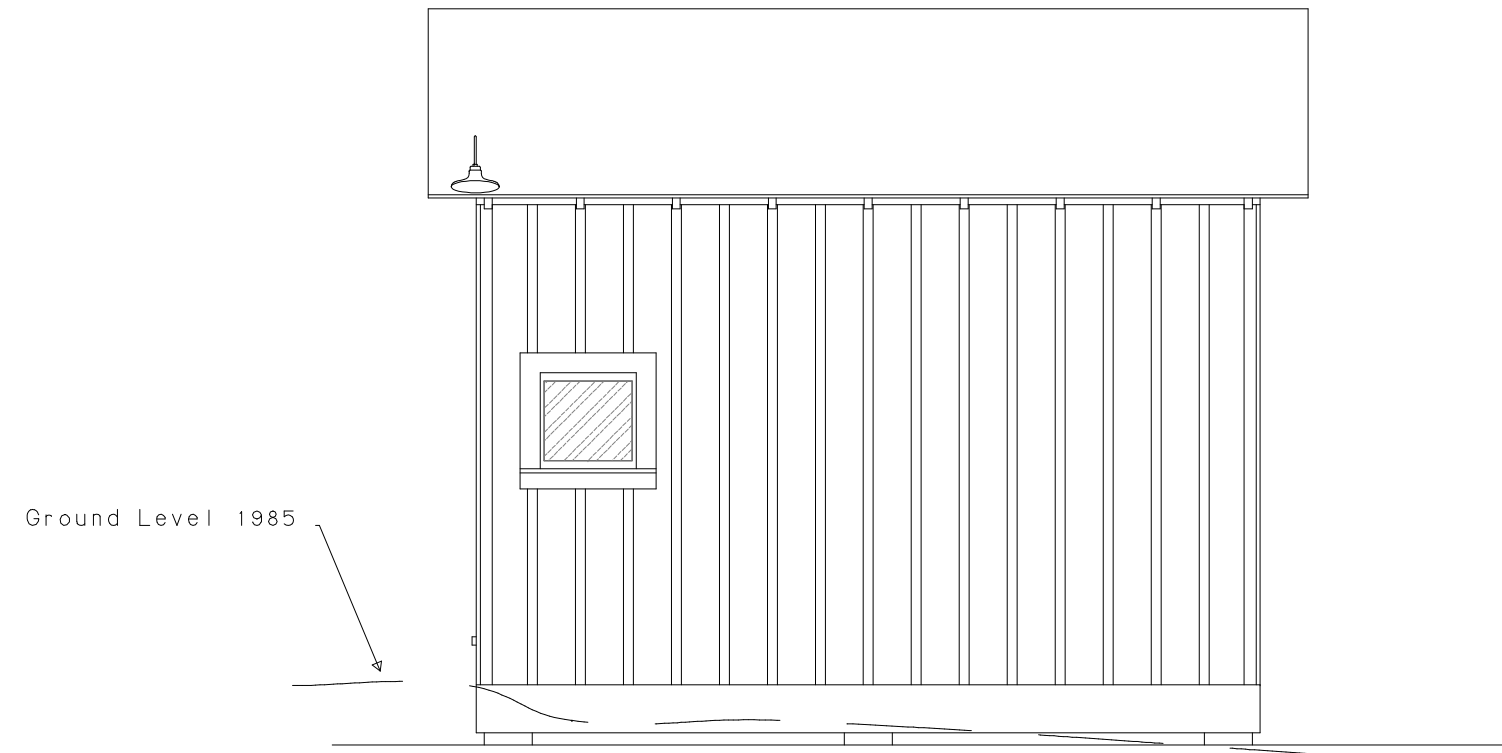
Copies of these drawings may be  
 made for noncommercial use only

# BATTEN DETAIL

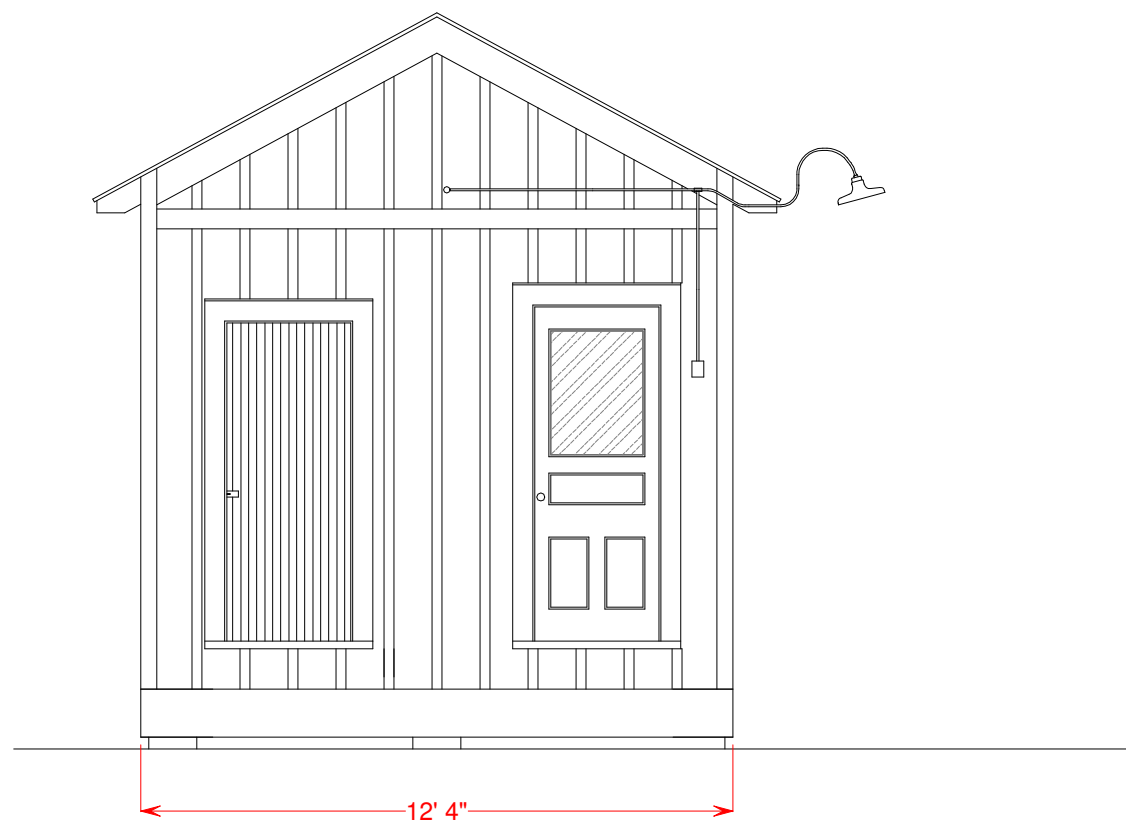
Cross Section



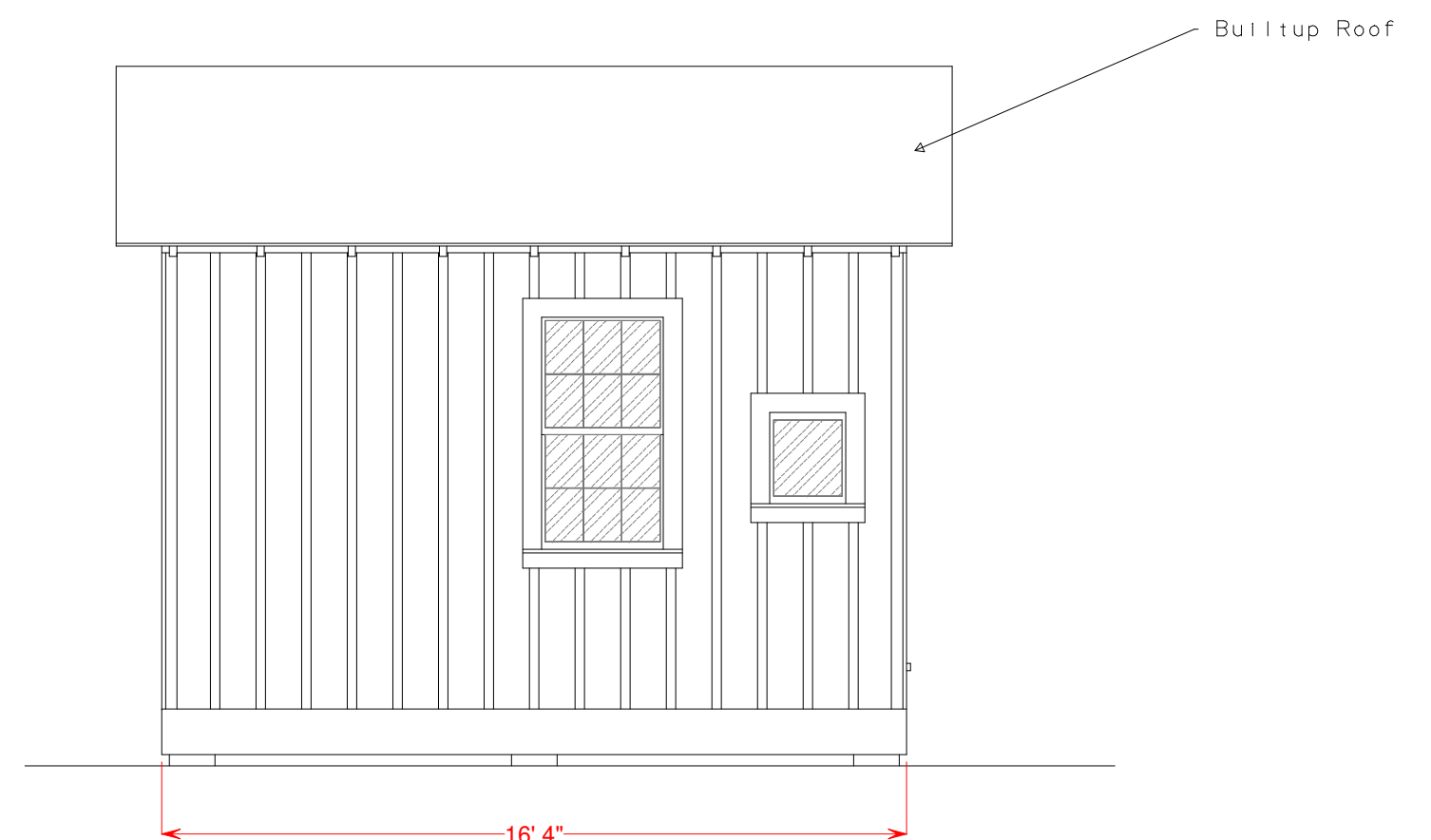
SOUTH ELEVATION



WEST ELEVATION



NORTH ELEVATION



EAST ELEVATION

Structure Built October 1948  
 Structure Razed Late 1985  
 Small windows added after 1946  
 See C & O Historical Magazine  
 Vol. XXXIII, No. 11

