

THE CHESAPEAKE & OHIO RAILWAY COMPANY

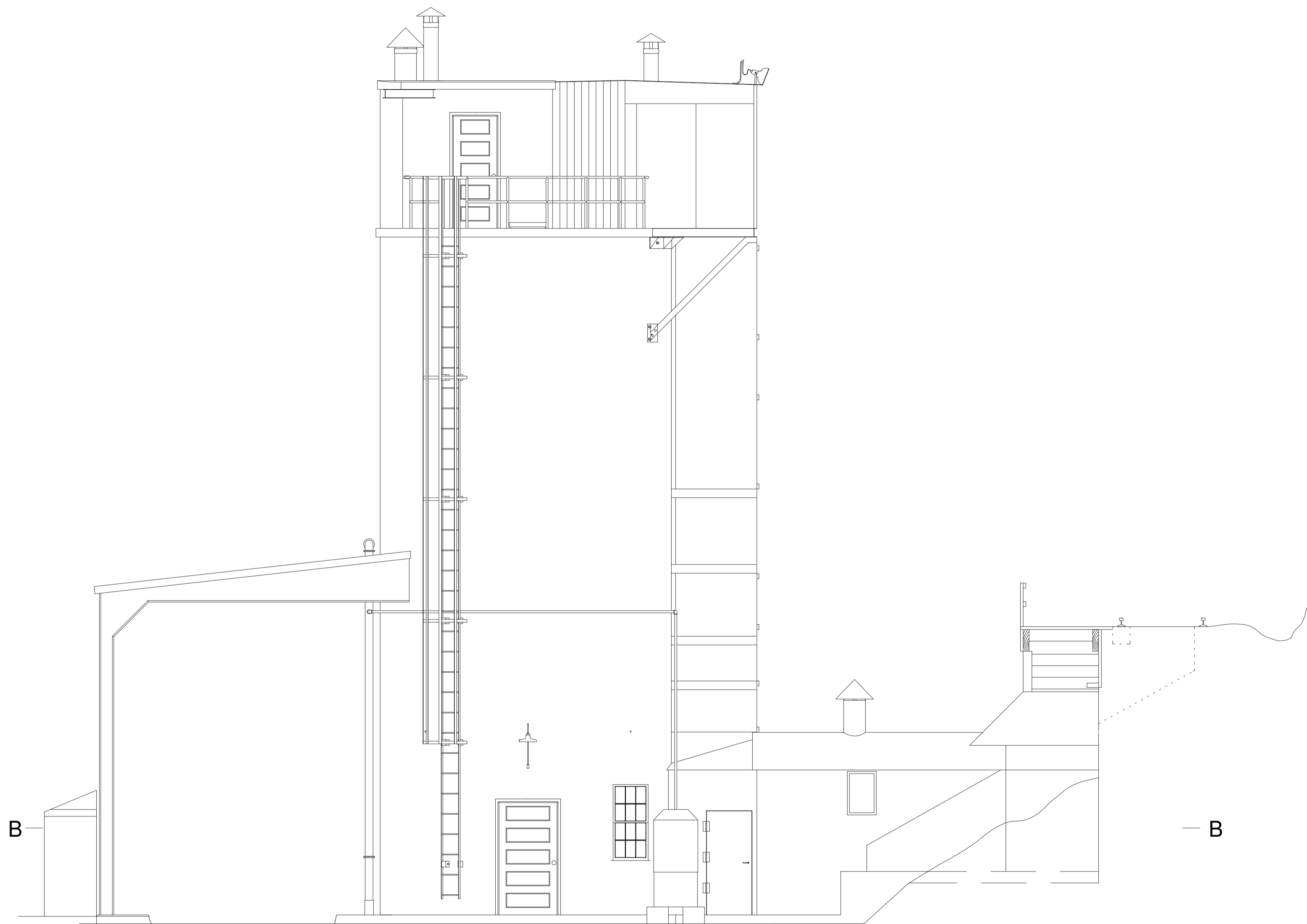
FAIRBANKS, MORSE & COMPANY
200 TON
SAND BUNKER
AT HINTON

SUMMERS COUNTY --- WEST VIRGINIA

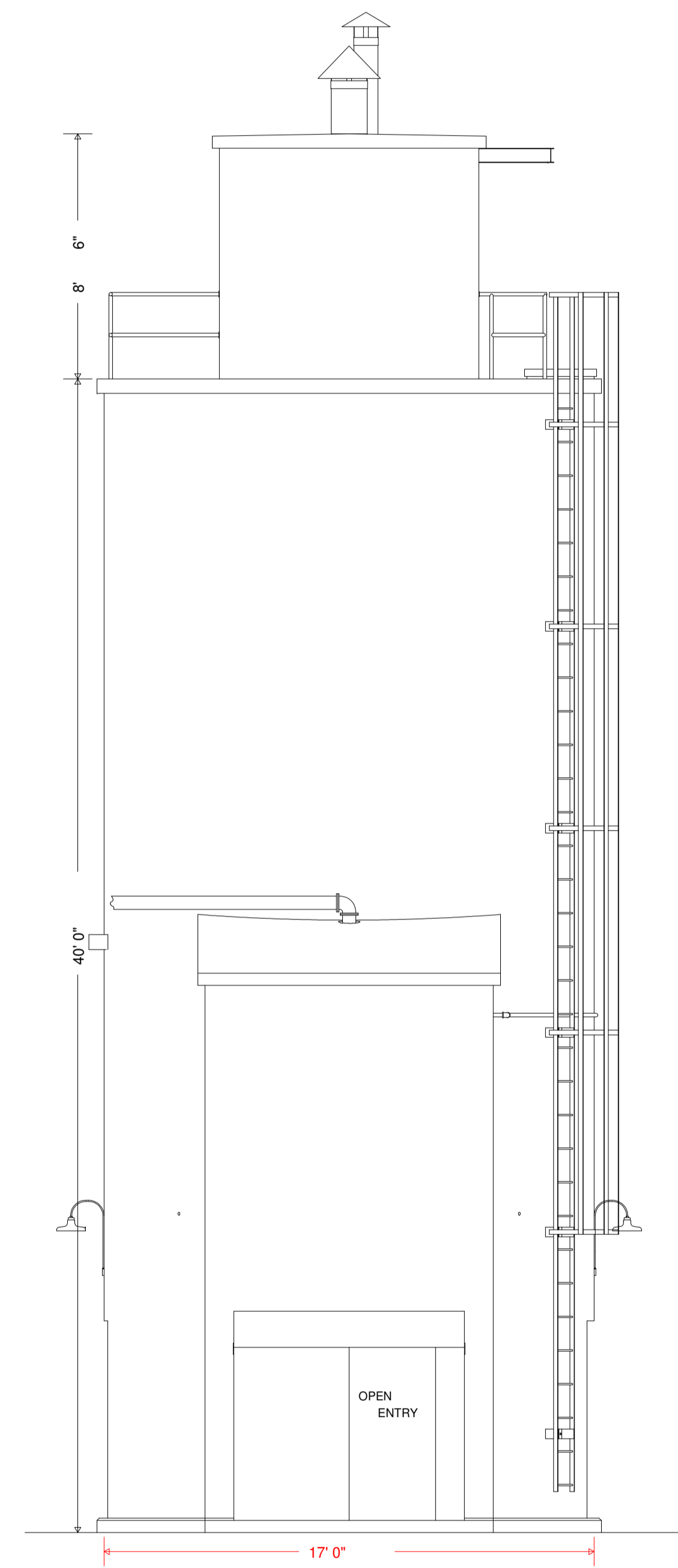
HINTON DIVISION -- NEW RIVER SUBDIVISION

SCALE: 1/4" = 1 FT
CIRCA 1946
Page 2 of 3

Copyright: 4/93
WILLIAM E. SIMONTON III ©



EAST ELEVATION



SOUTH ELEVATION