

THE CHESAPEAKE & OHIO RAILWAY COMPANY

COAL DOCK FOREMAN'S OFFICE
LOCKER AND TOILET
AT HINTON

SUMMERS COUNTY - - - WEST VIRGINIA

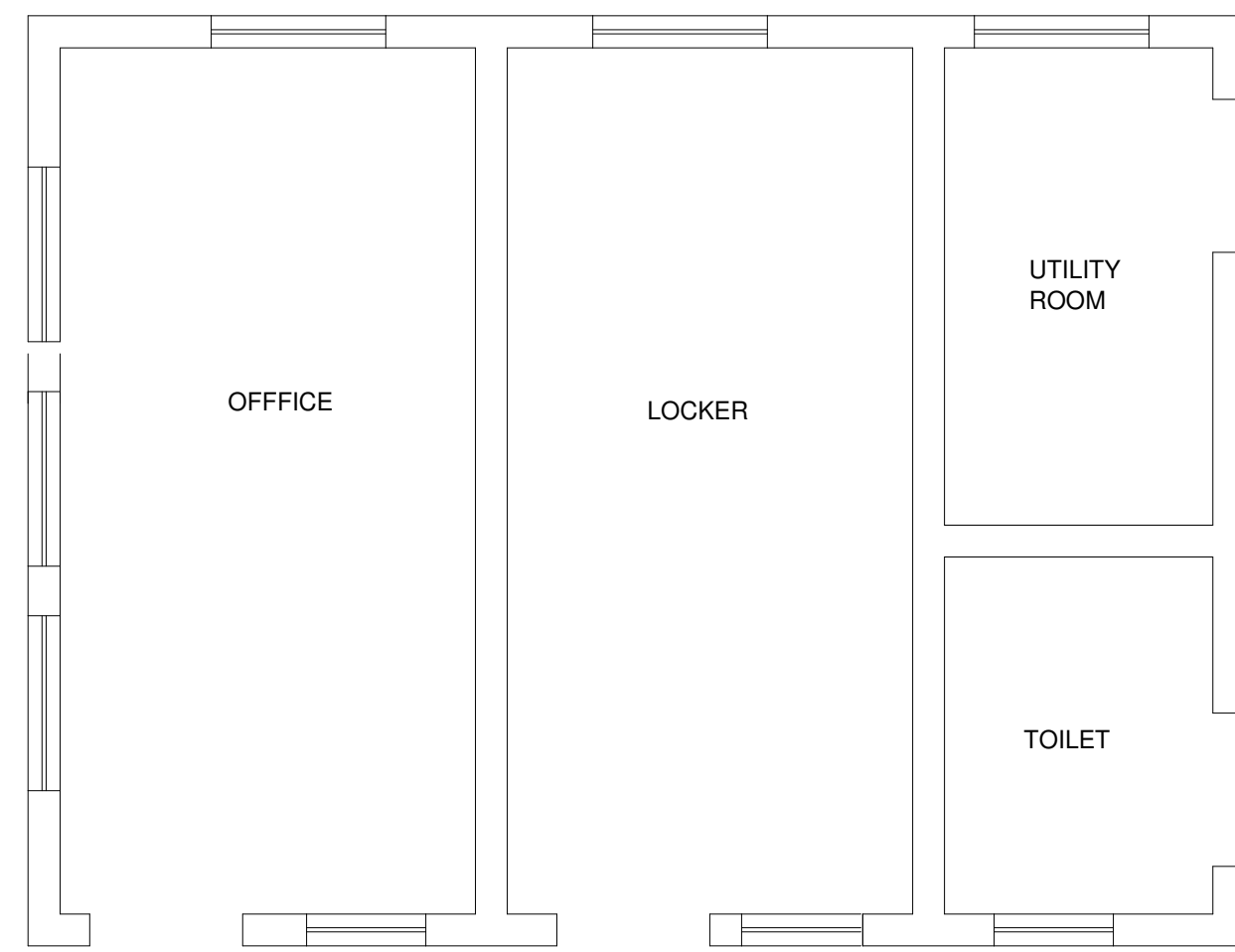
HINTON DIVISION - - - NEW RIVER SUBDIVISION

SCALE: 1/4" = 1 FOOT
CIRCA 1946

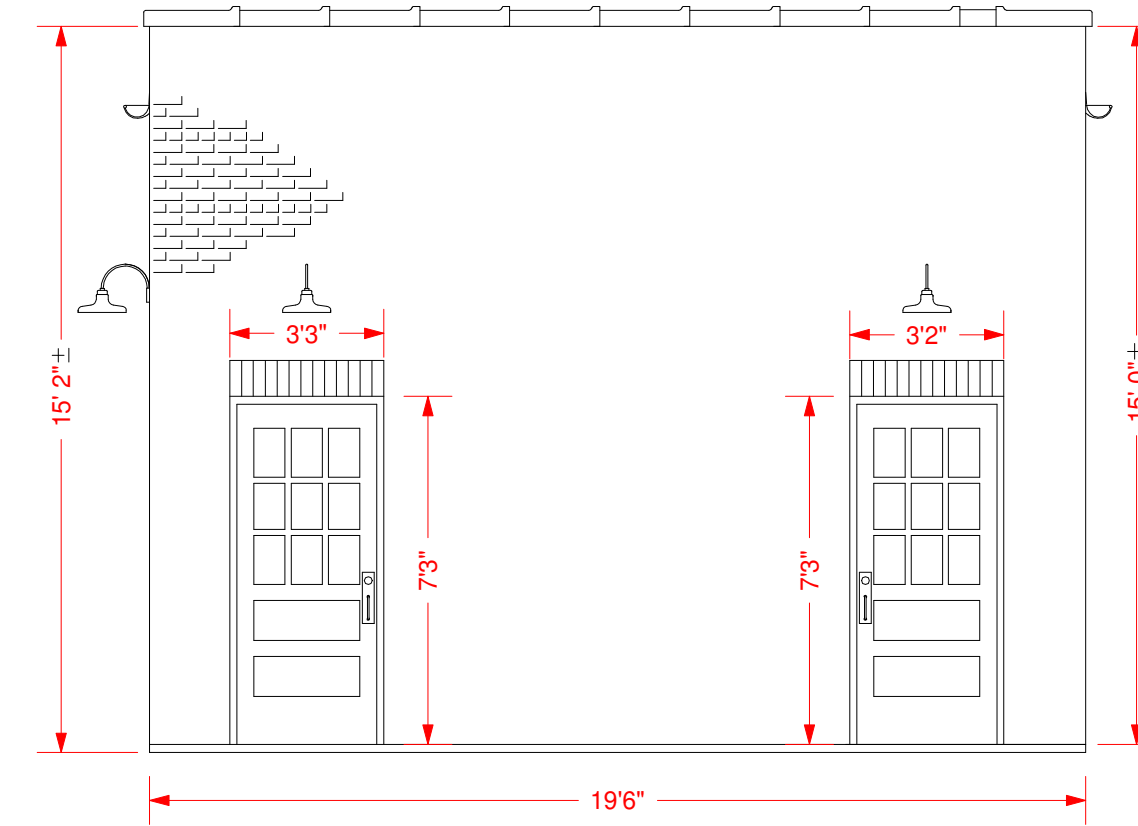
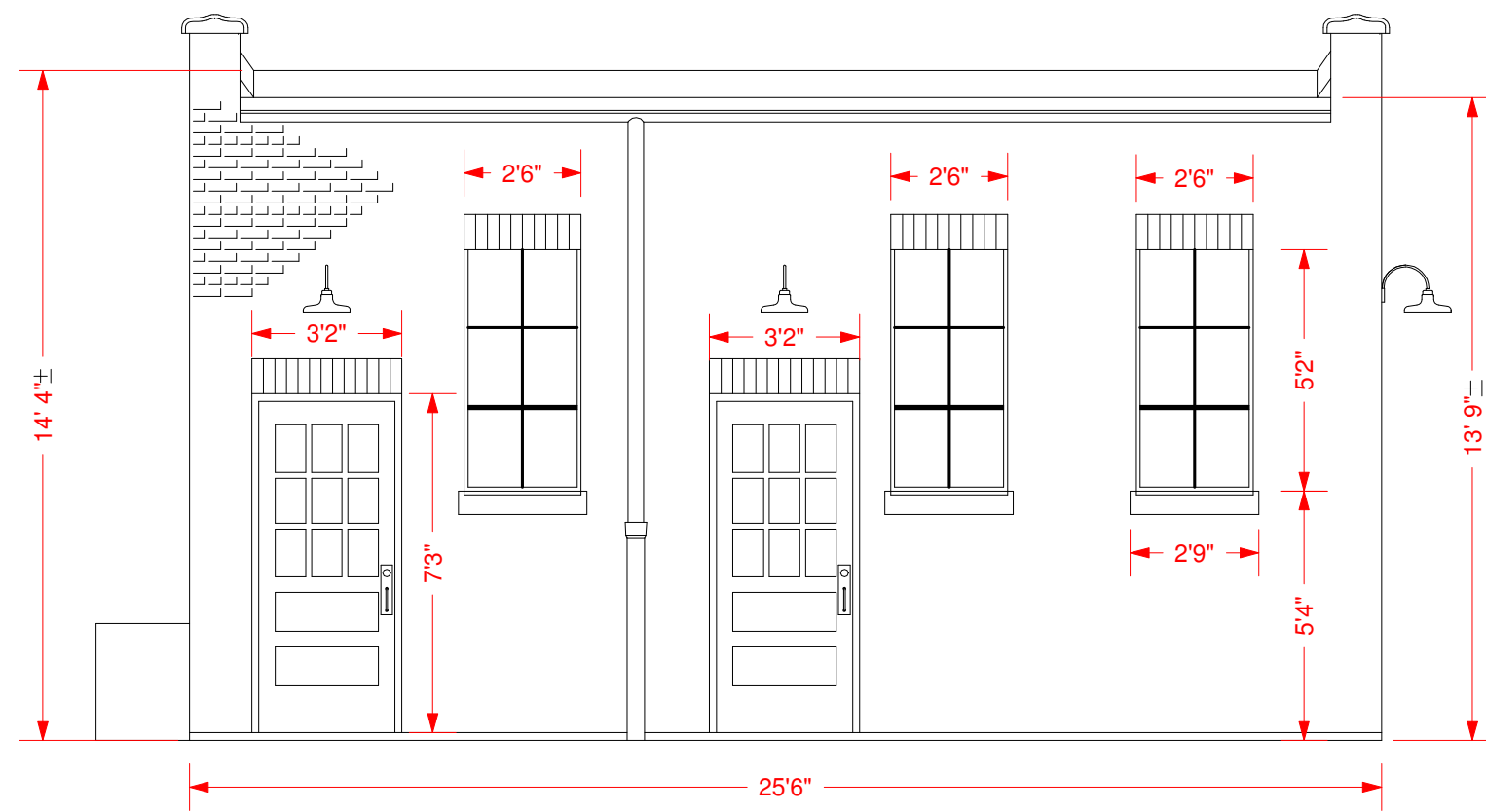
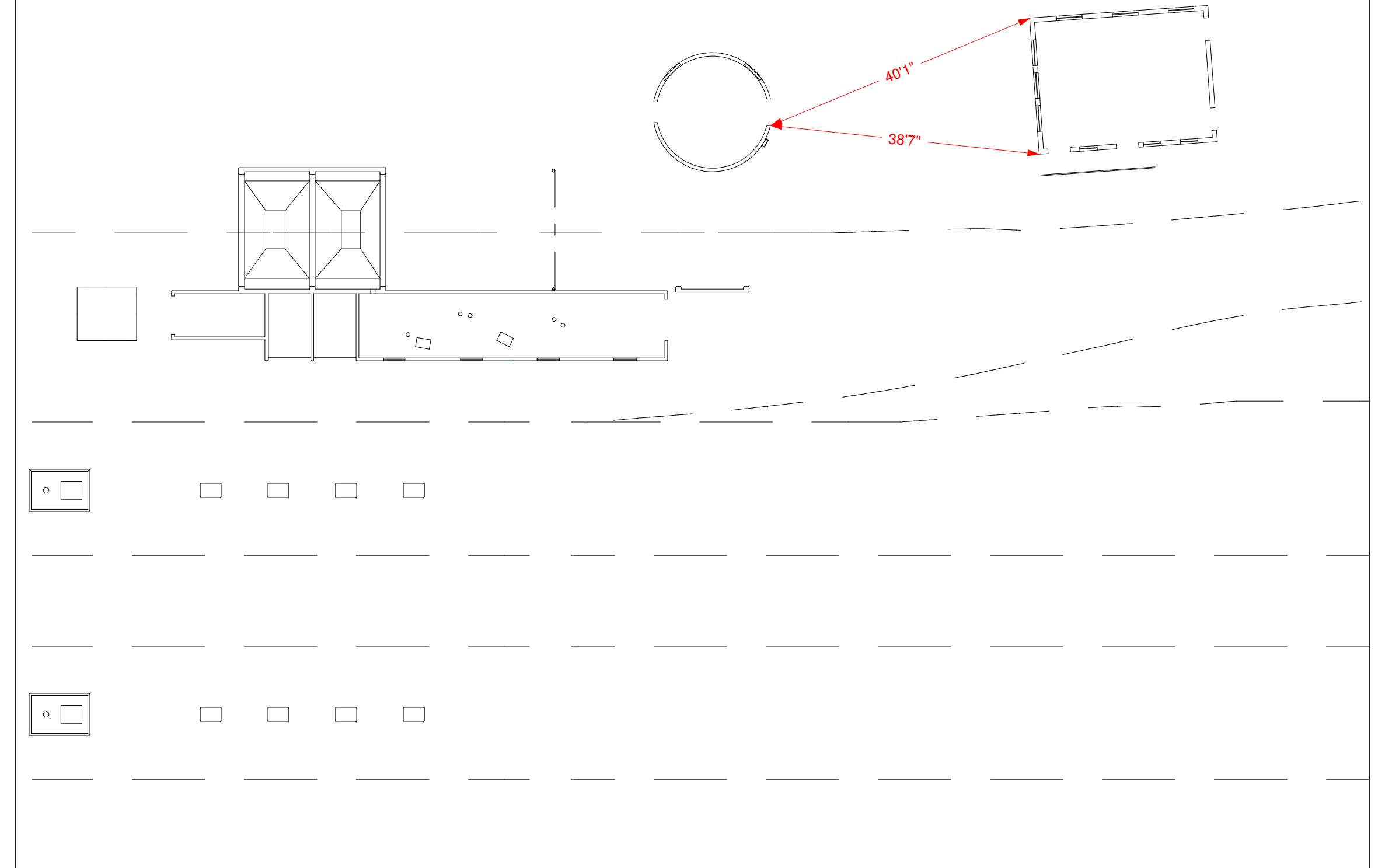
COPYRIGHT BY:
WILLIAM E. SIMONTON III

4/93

NOTE: INTERIOR LAYOUT BASED UPON OBSERVATION - NOT MEASUREMENTS OR PLANS



RAILING



NOTE: LIGHTS ABOVE DOORS BACKDATE EXISTING (1980) LIGHTS AND CONFORM TO THE ORIGINAL COAL DOCK LIGHTING. ACTUAL ARRANGEMENT IS NOT KNOWN BUT SHOULD APPROXIMATE ILLUSTRATED LIGHTS.

