

THE CHESAPEAKE & OHIO RAILWAY COMPANY

D & M PUMP HOUSE
STRUCTURE NO. 100
AT
HINTON

SUMMERS COUNTY - - - WEST VIRGINIA

HINTON DIVISION - - - NEW RIVER SUBDIVISION

SCALE: 1/4" = 1 FOOT

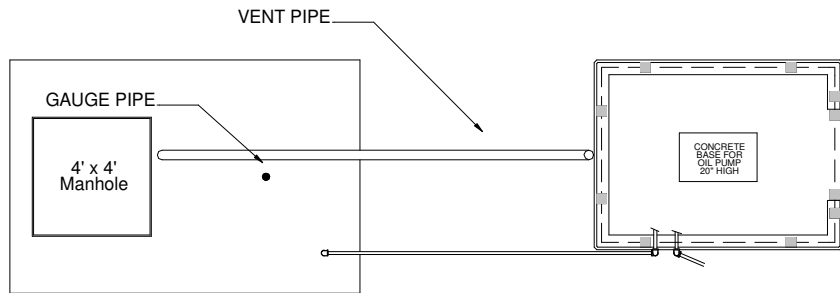
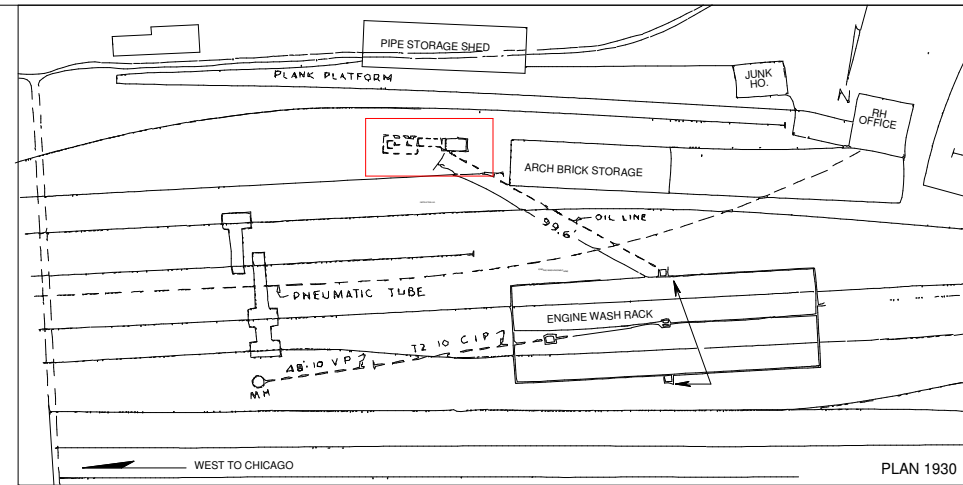
CIRCA 1930

Copyright:

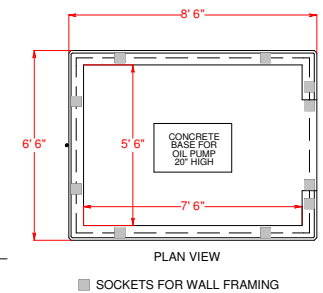
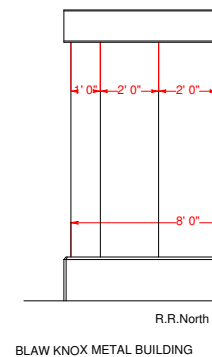
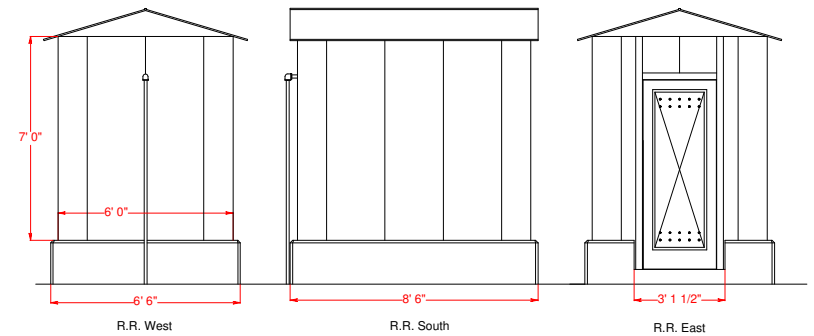
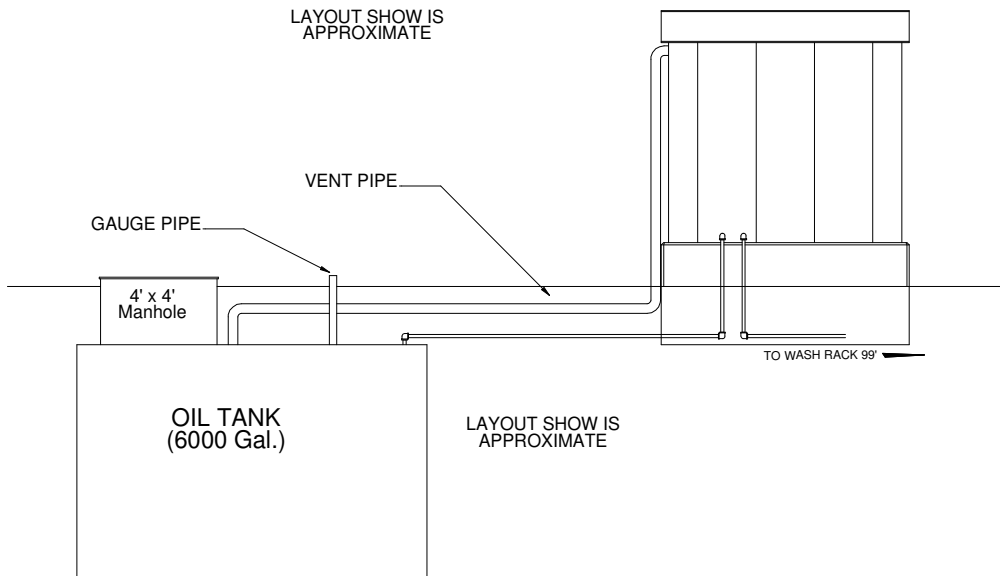
WILLIAM E. SIMONTON III

5/2004

©



LAYOUT SHOW IS APPROXIMATE



BLAW KNOX METAL BUILDING