

THE CHESAPEAKE & OHIO RAILWAY COMPANY

ARCH BRICK STORE HOUSE  
STRUCTURE NO. 88  
AT HINTON

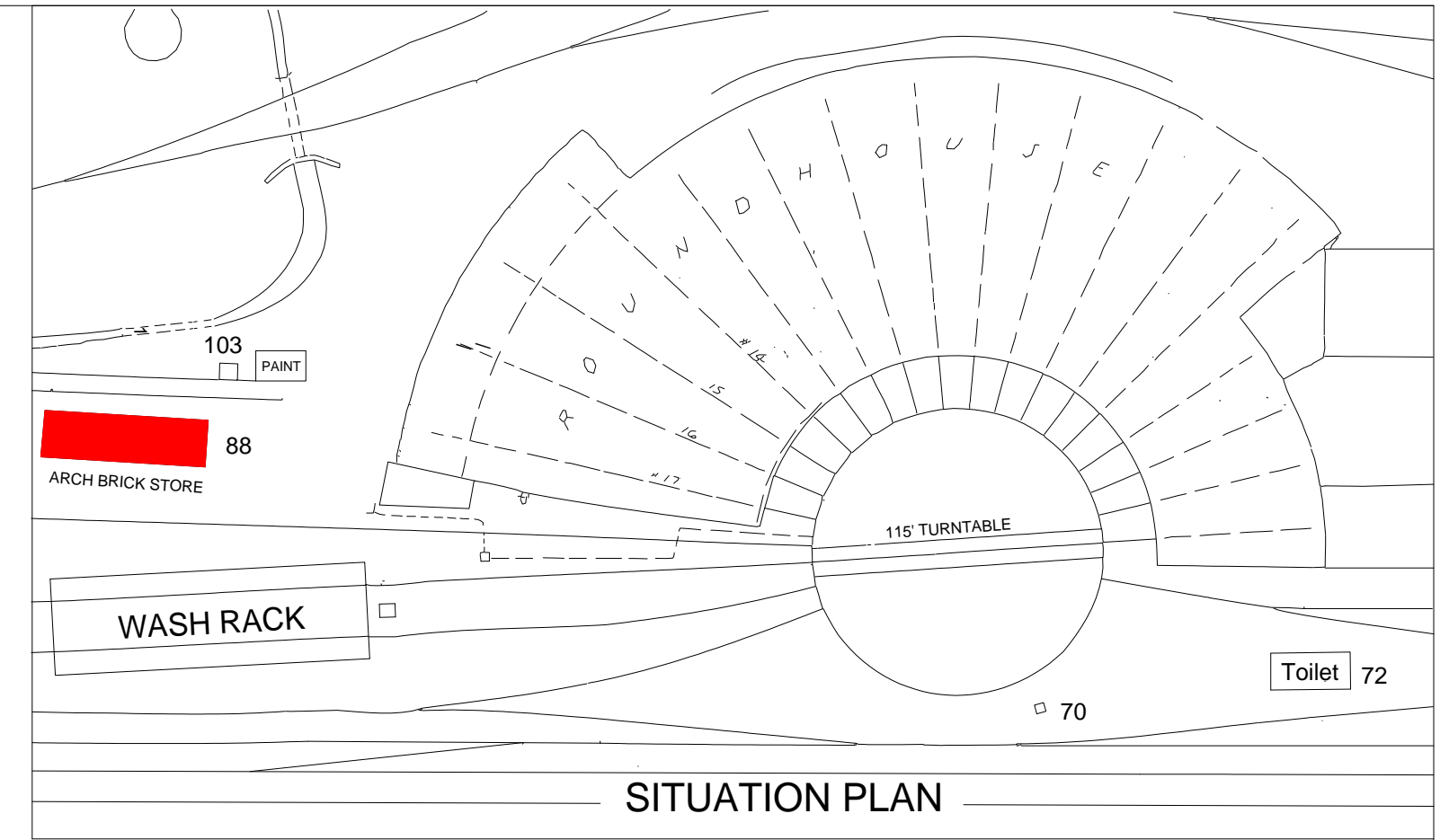
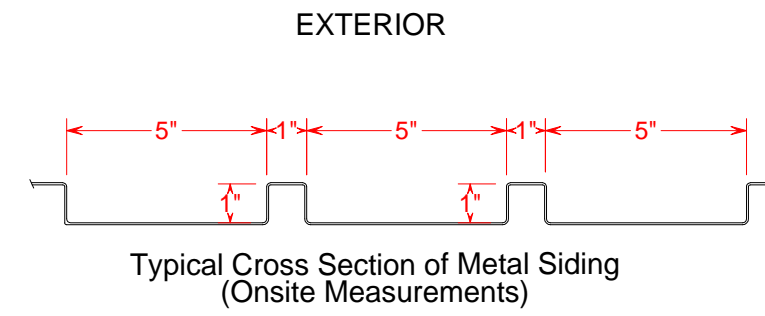
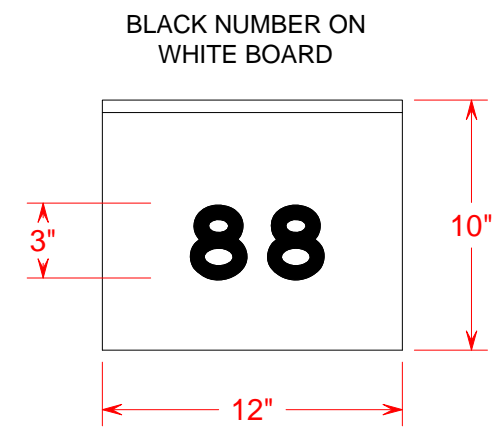
SUMMERS COUNTY - - - WEST VIRGINIA

HINTON DIVISION - - - NEW RIVER SUBDIVISION

SCALE: 1/4" = 1 FOOT  
CIRCA 1946

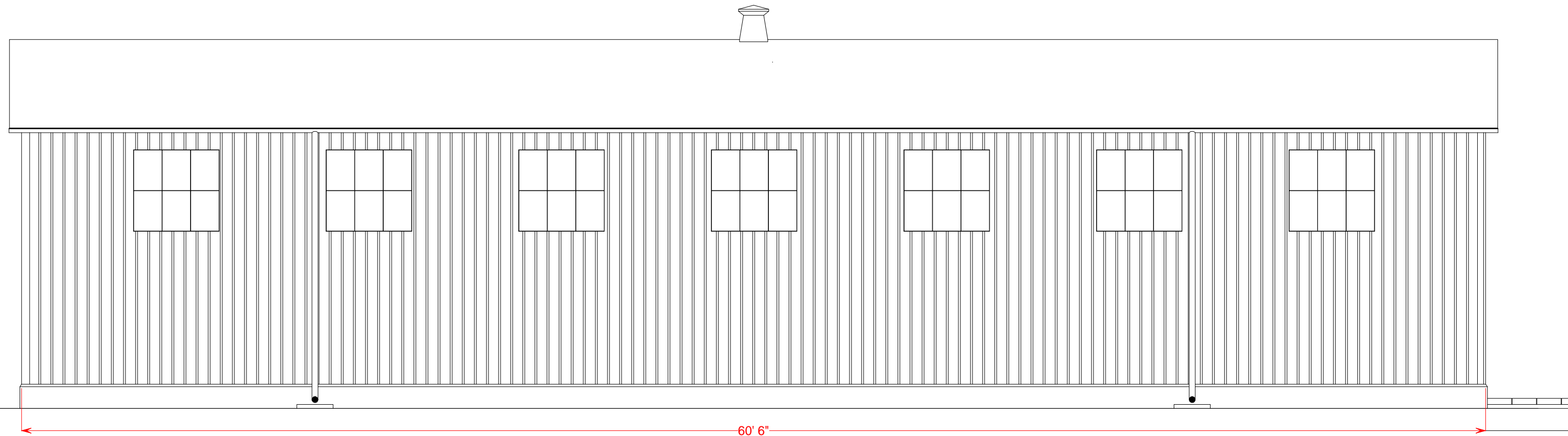
COPYRIGHT BY:  
WILLIAM E. SIMONTON III

02/2004  
©

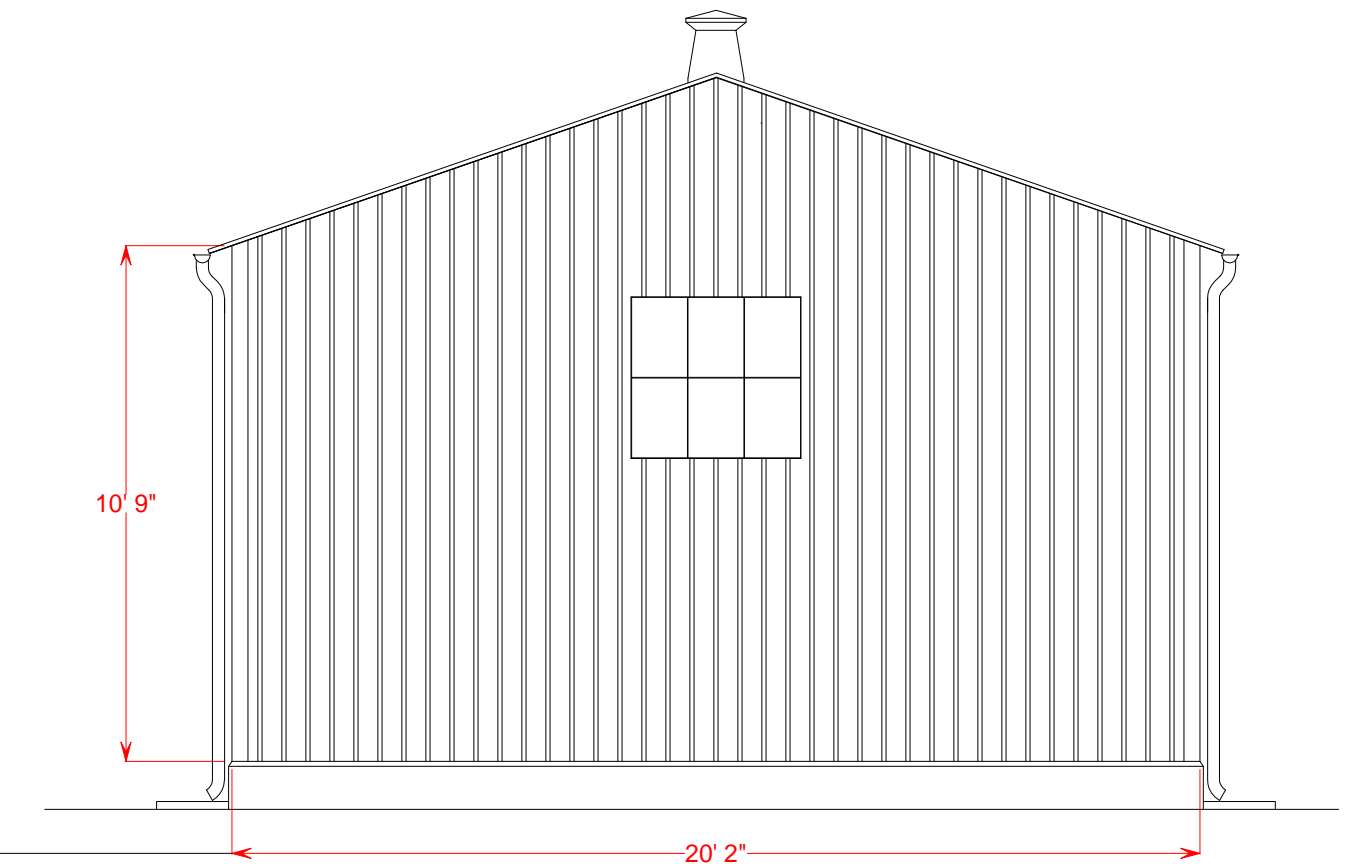


Note: Drawings based upon C & O Drawing No. 8720 and on-site measurements and photographs. All directions are railroad direction. The building is a Blaw-Knox metal building.

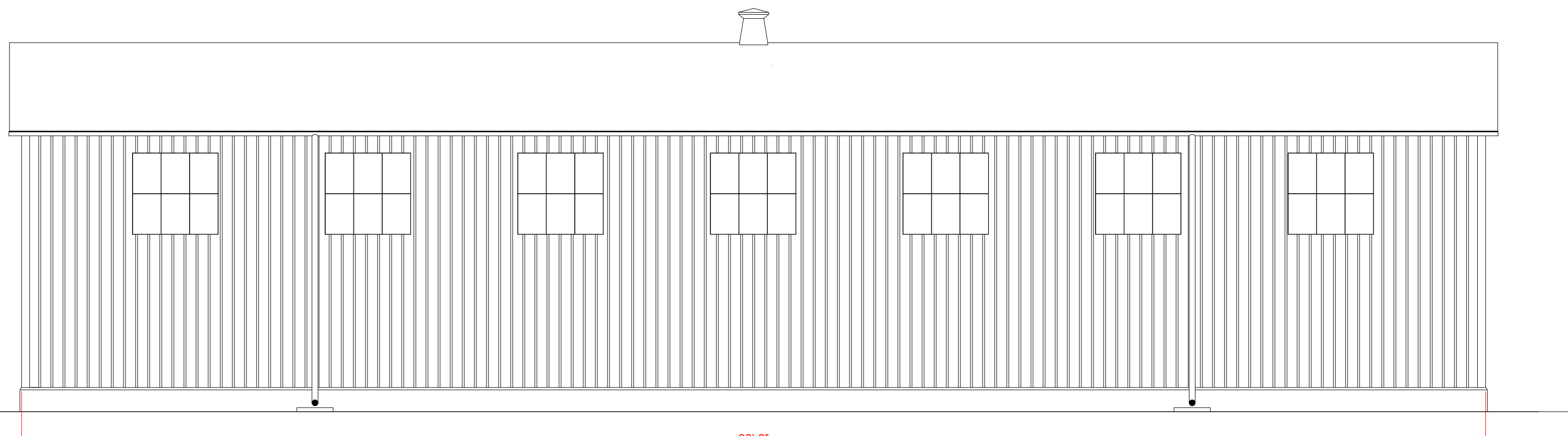
Note: In the late steam era the building was painted the standard C & O engine house red, an oxide red or Tuscan Red shade. In 1976 the building was painted black and in the 1980's the building was painted silver.



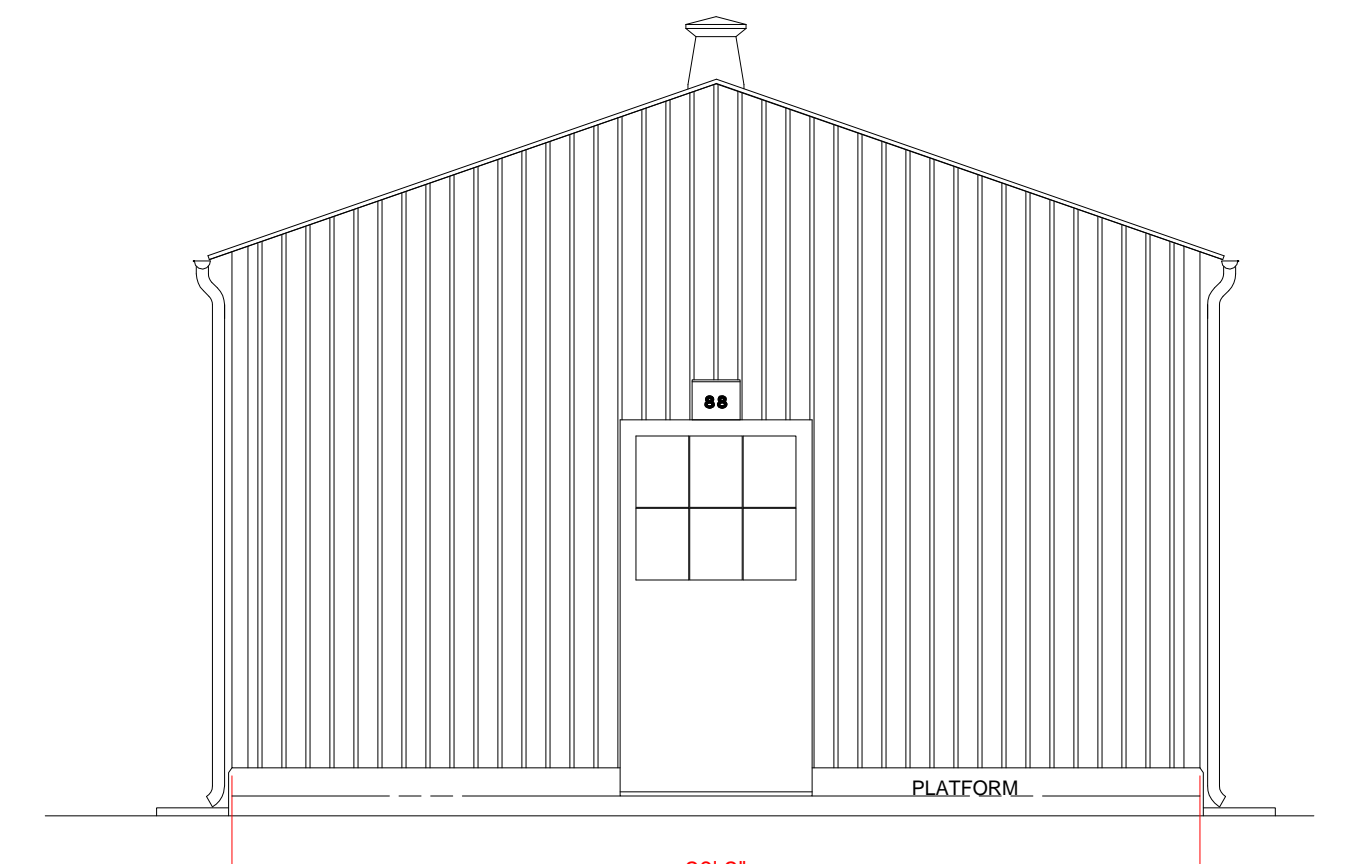
SOUTH ELEVATION



WEST ELEVATION



NORTH ELEVATION



EAST ELEVATION