

THE CHESAPEAKE & OHIO RAILWAY COMPANY

STORE ROOM - STRUCTURE NO. 75
ATTACHED TO MALLET HOUSE
CONVERTED 1925 - RETIRED 1940
AT HINTON

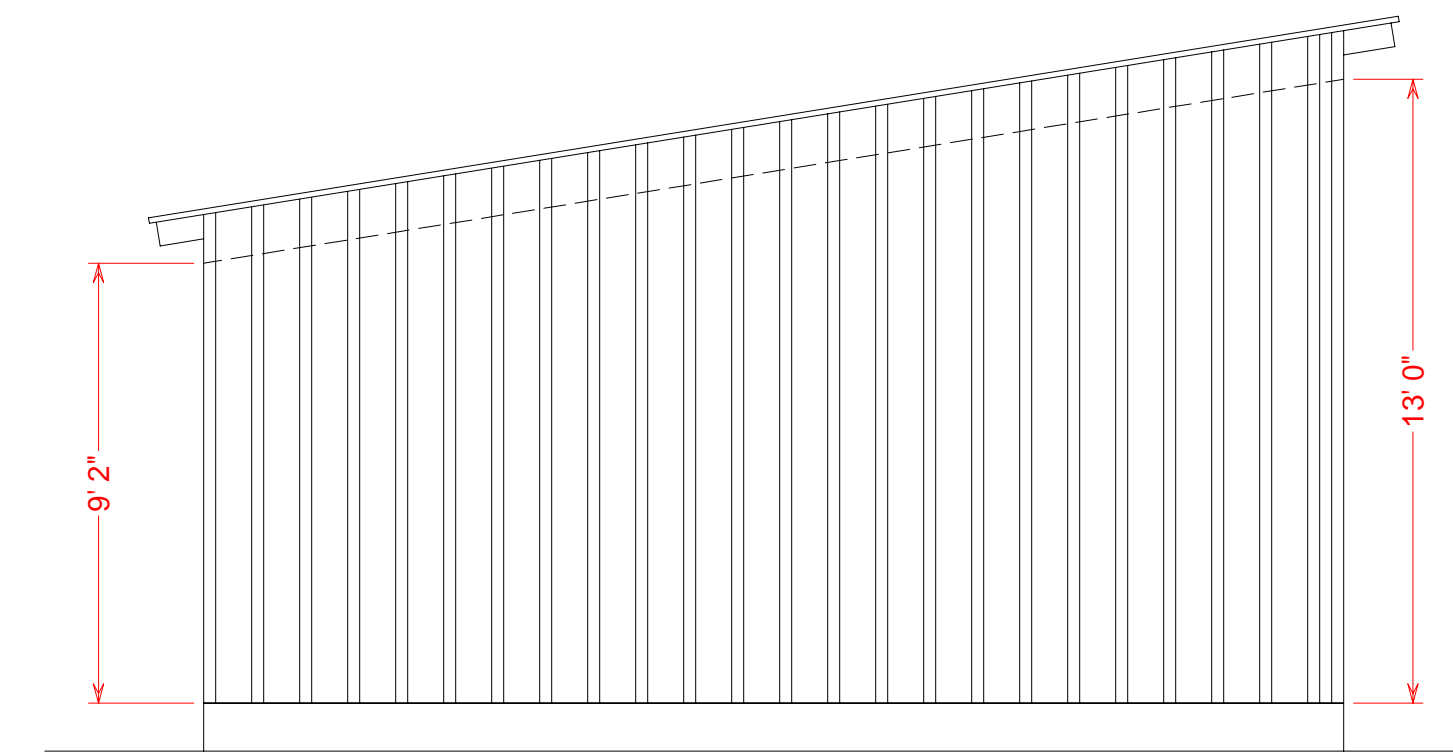
SUMMERS COUNTY - - - WEST VIRGINIA

HINTON DIVISION - - - NEW RIVER SUBDIVISION

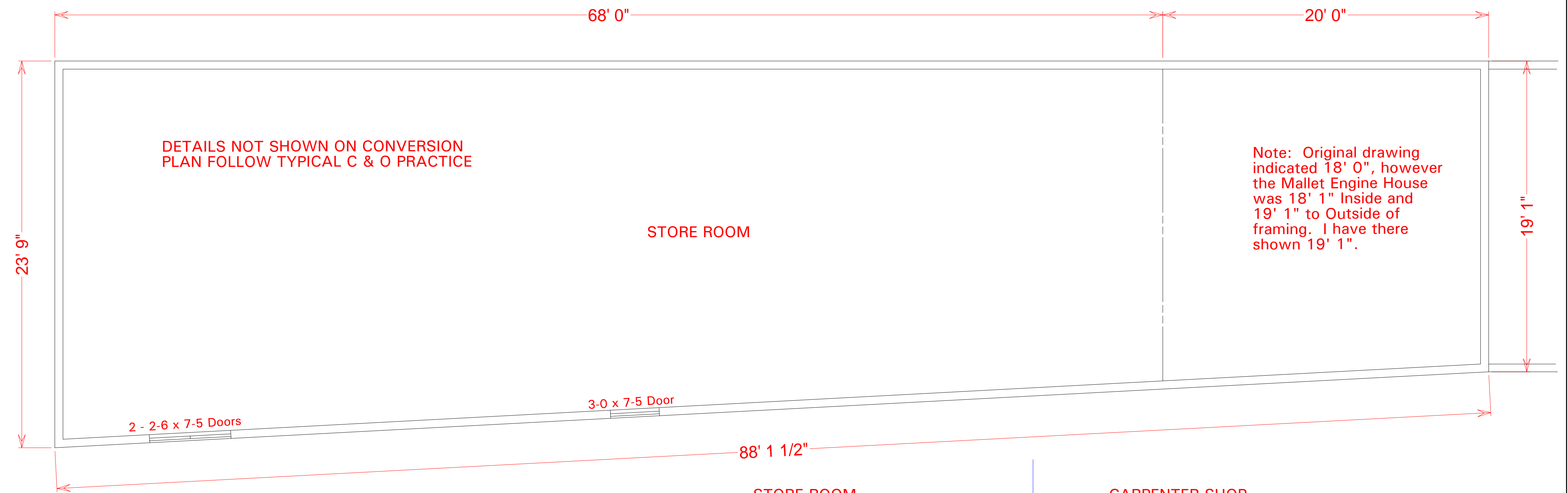
SCALE: 1/4" = 1 FOOT
CIRCA 1930

COPYRIGHT BY:
WILLIAM E. SIMONTON III

4/2005



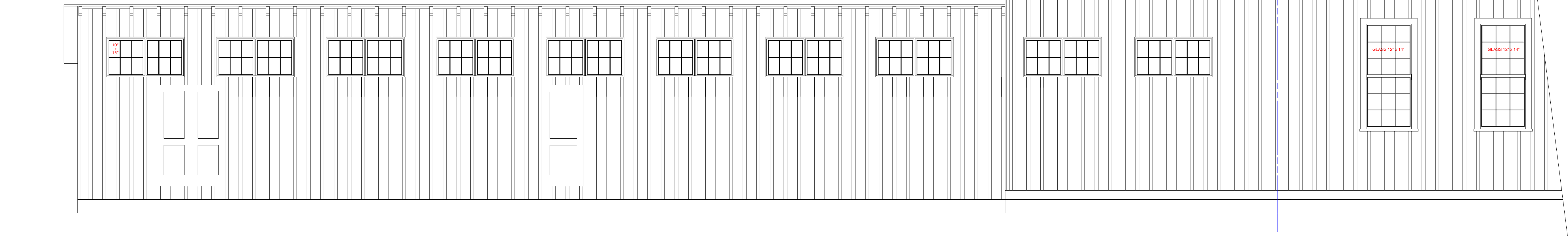
ALSO SEE C O DRW. 7038-A



STORE ROOM

STORE ROOM

CARPENTER SHOP



CARPENTER SHOP

STORE ROOM

STORE ROOM

