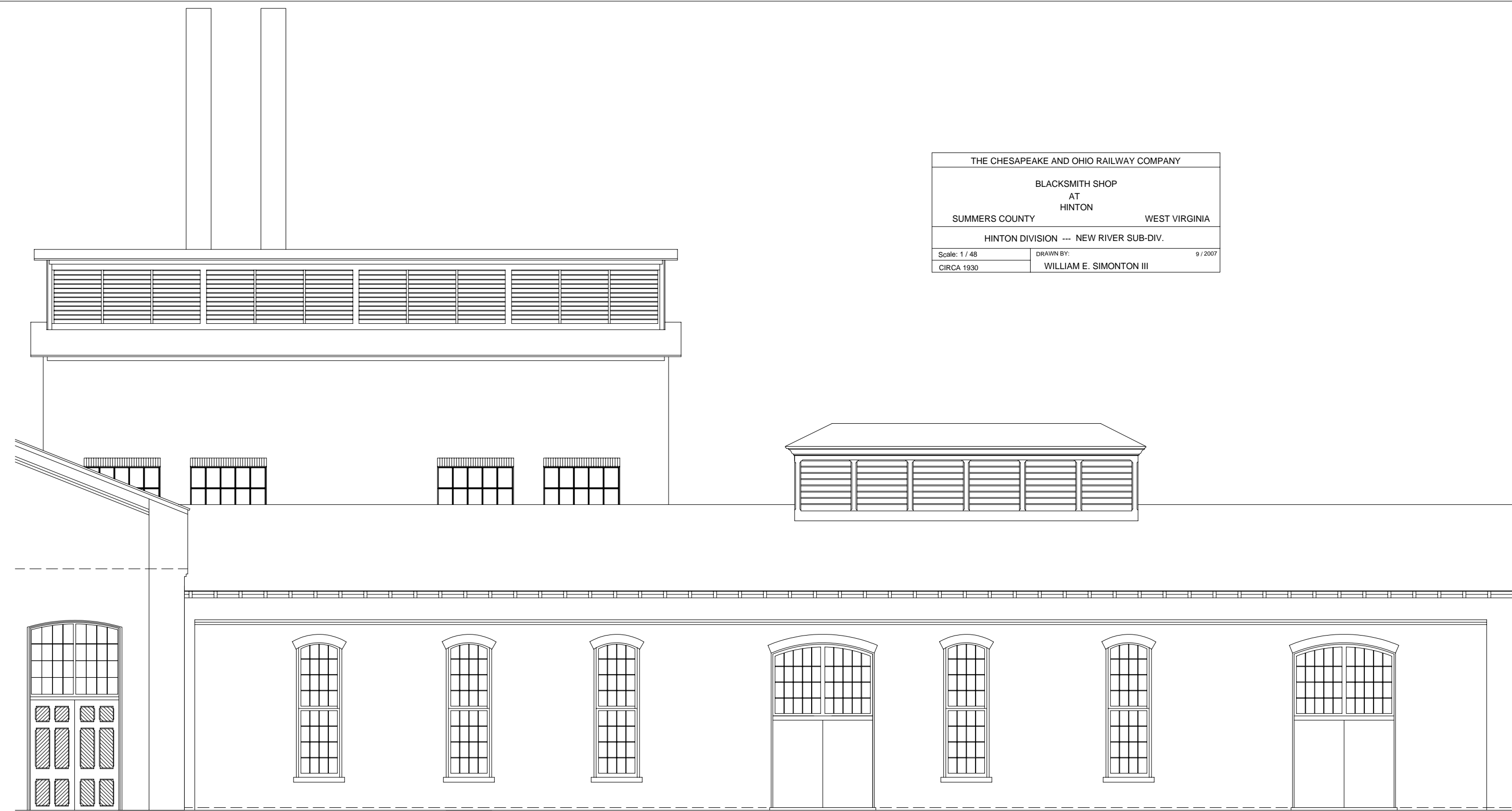
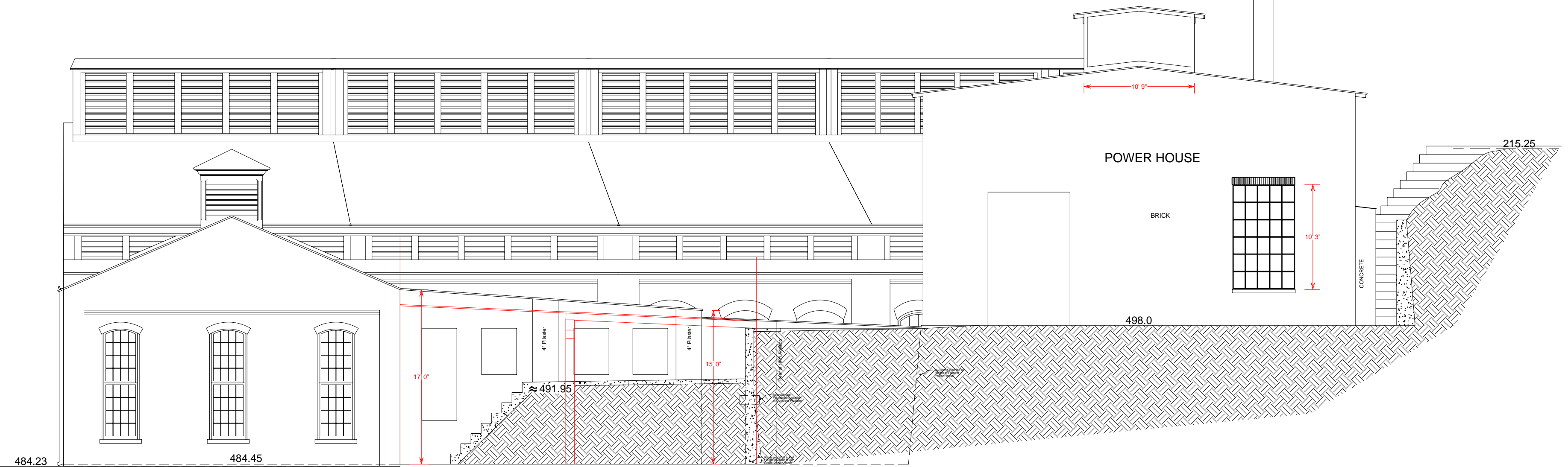


THE CHESAPEAKE AND OHIO RAILWAY COMPANY
 BLACKSMITH SHOP
 AT
 HINTON
 SUMMERS COUNTY WEST VIRGINIA
 HINTON DIVISION -- NEW RIVER SUB-DIV.
 Scale: 1/4" = 1'-0" DRAWN BY: W. E. SIMONSON III
 CIRCA 1930



SOUTH WALL



EAST WALL

FLAT RENDERING

Door Placed by Field Measurement
 Appearance based upon C & O
 drawing and photograph.

