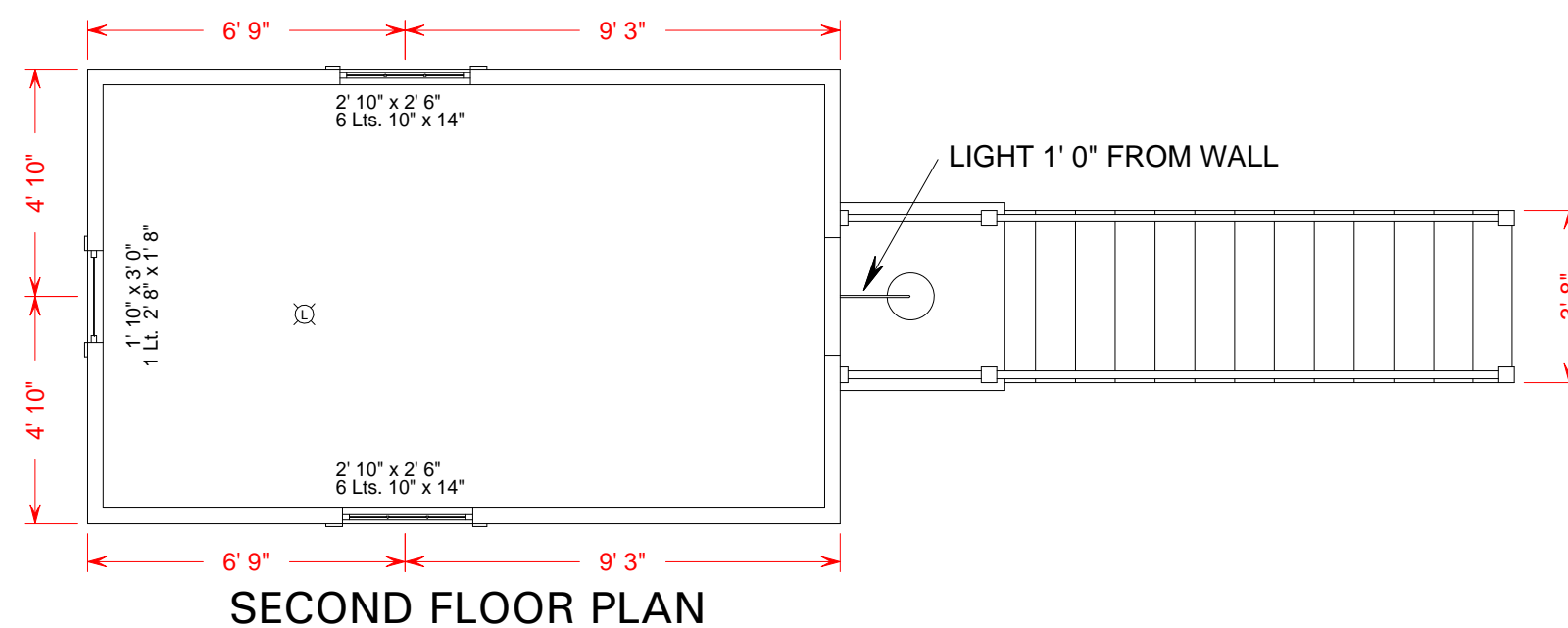
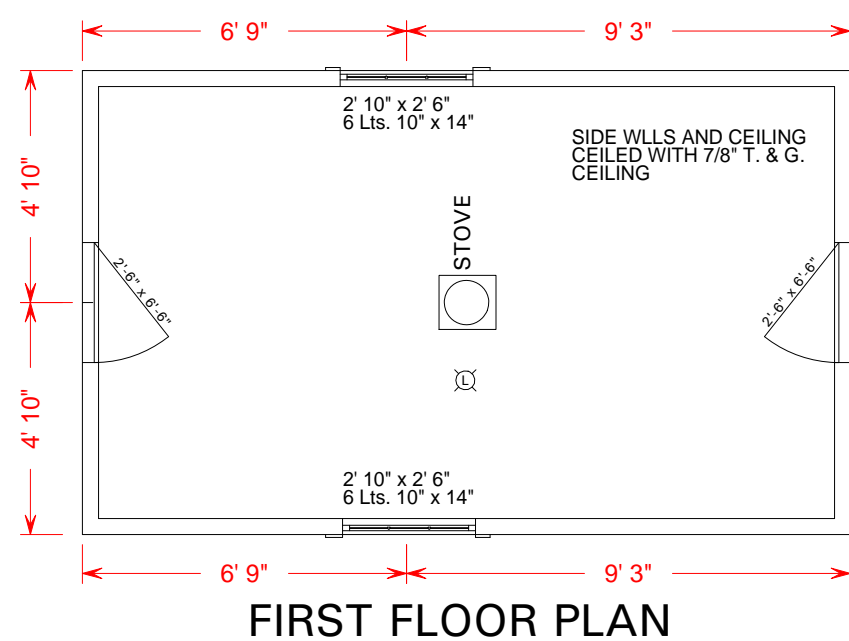
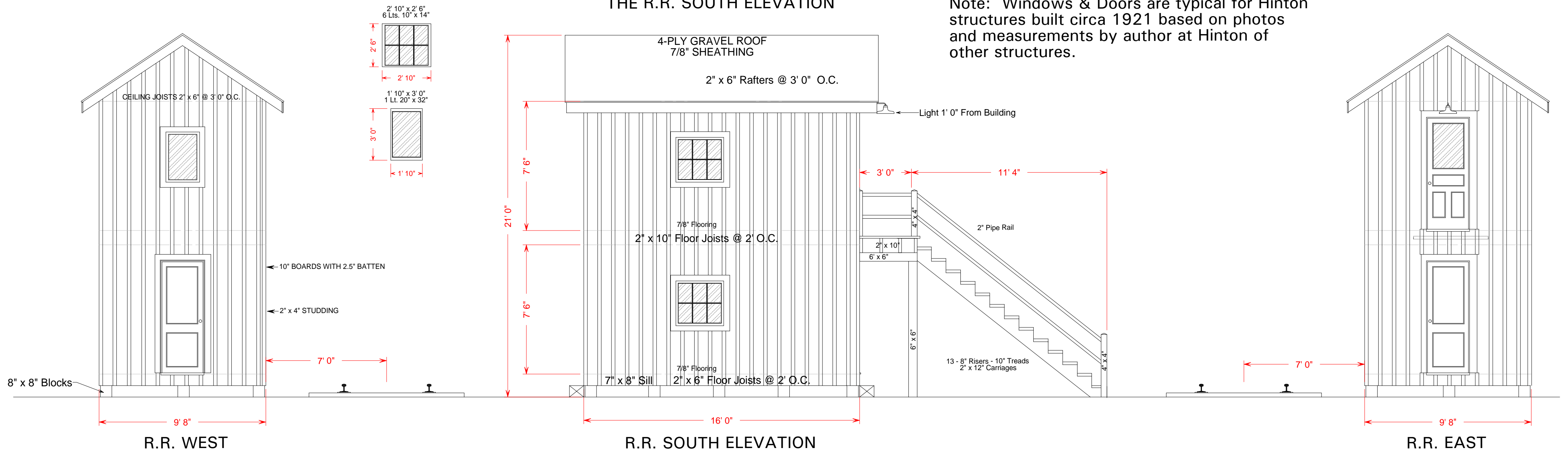


Date: 10-31-1921

**R.R. NORTH ELEVATION MIRROWS
THE R.R. SOUTH ELEVATION**

Note: Windows & Doors are typical for Hinton structures built circa 1921 based on photos and measurements by author at Hinton of other structures.



THE CHESAPEAKE & OHIO RAILWAY COMPANY		
ASSIST. YARD MASTER'S OFFICE later "GRAND CENTRAL YARD OFFICE" STRUCTURE NO. 51 AT HINTON		
SUMMERS COUNTY		- - - WEST VIRGINIA
HINTON DIVISION		- - - NEW RIVER SUBDIVISION
SCALE: 1/4" = 1 FOOT	COPYRIGHT BY:	08/2010
CIRCA 1921 - 1946	WILLIAM E. SIMONTON III	(C)