

THE CHESAPEAKE & OHIO RAILWAY COMPANY

REAR ELEVATIONS
STALLS 5-11
AT HINTON

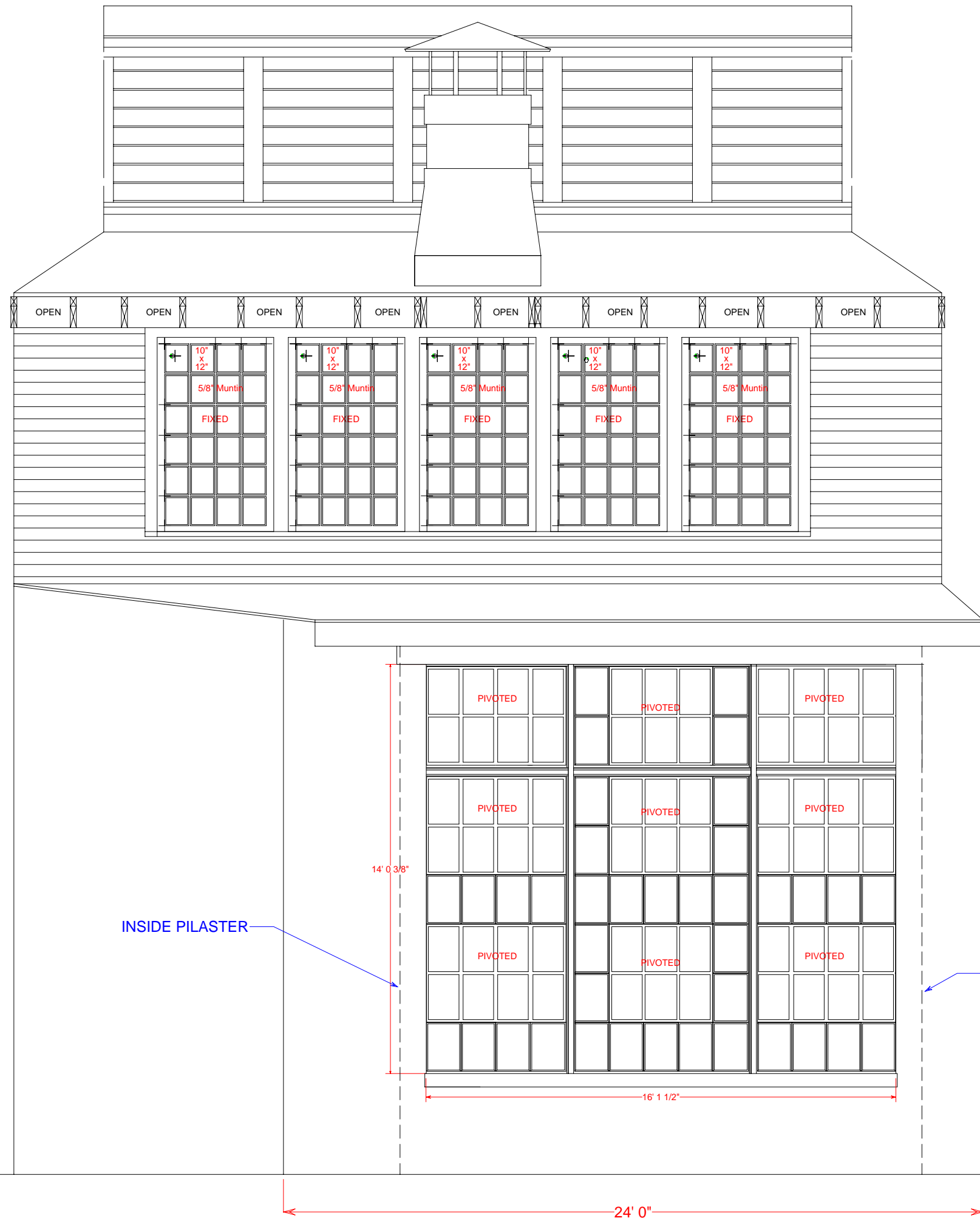
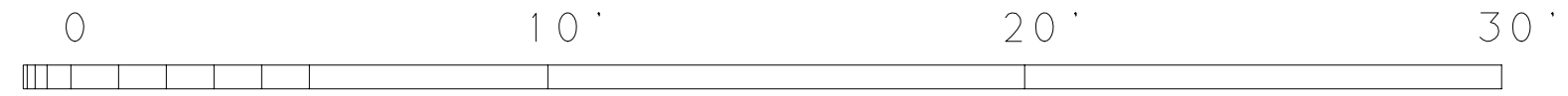
SUMMERS COUNTY - - - WEST VIRGINIA

HINTON DIVISION - - - NEW RIVER SUBDIVISION

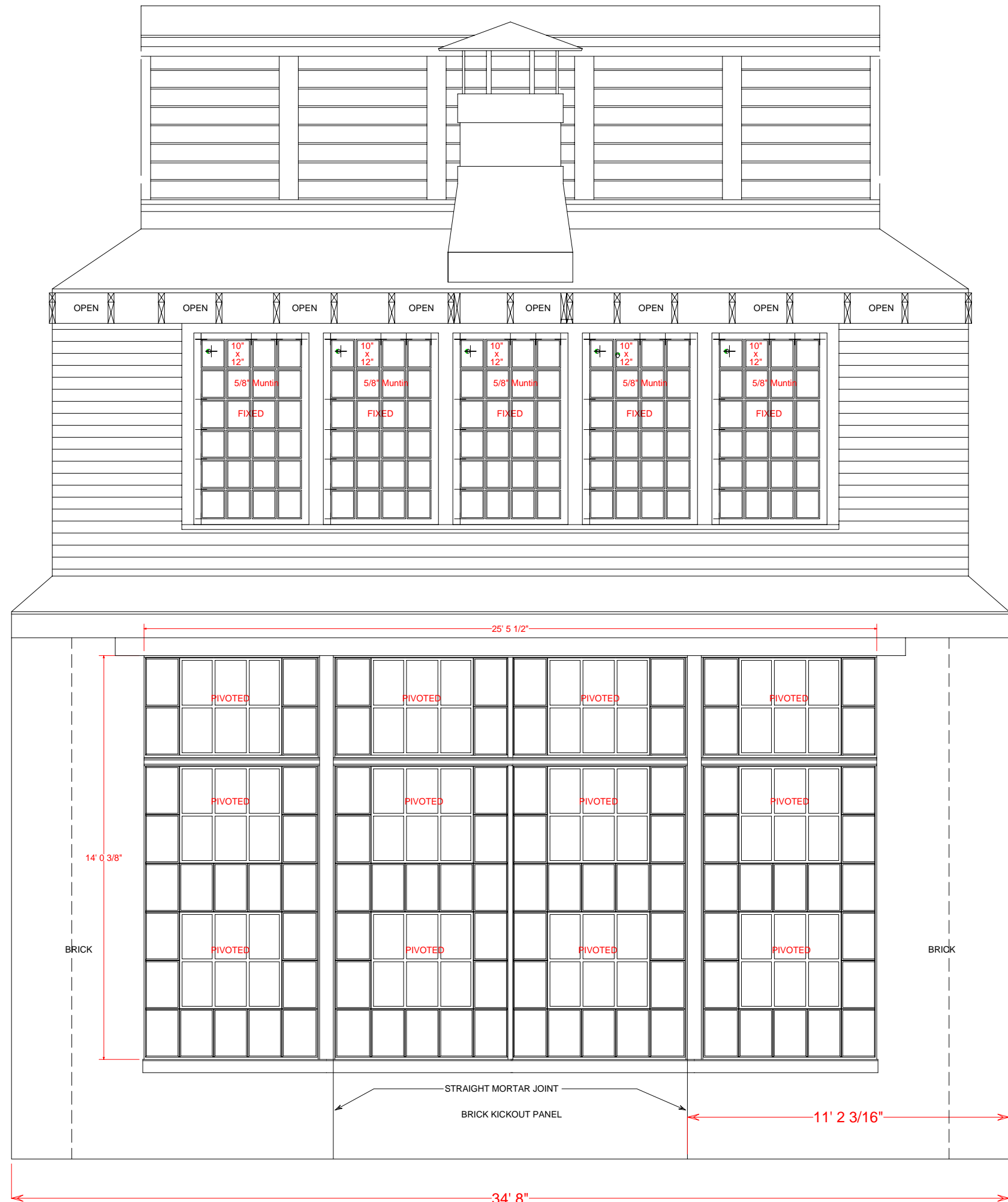
SCALE: 1/4" = 1 FOOT
CIRCA 1930

COPYRIGHT BY:
WILLIAM E. SIMONTON III

02/2010
©



STALL NO. 5



STALLS NOS. 6-11